

# Bělčice, Strakonice dist., South Bohemian Region

## Rectangular enclosure

(Iron Age, 200 BC–0)

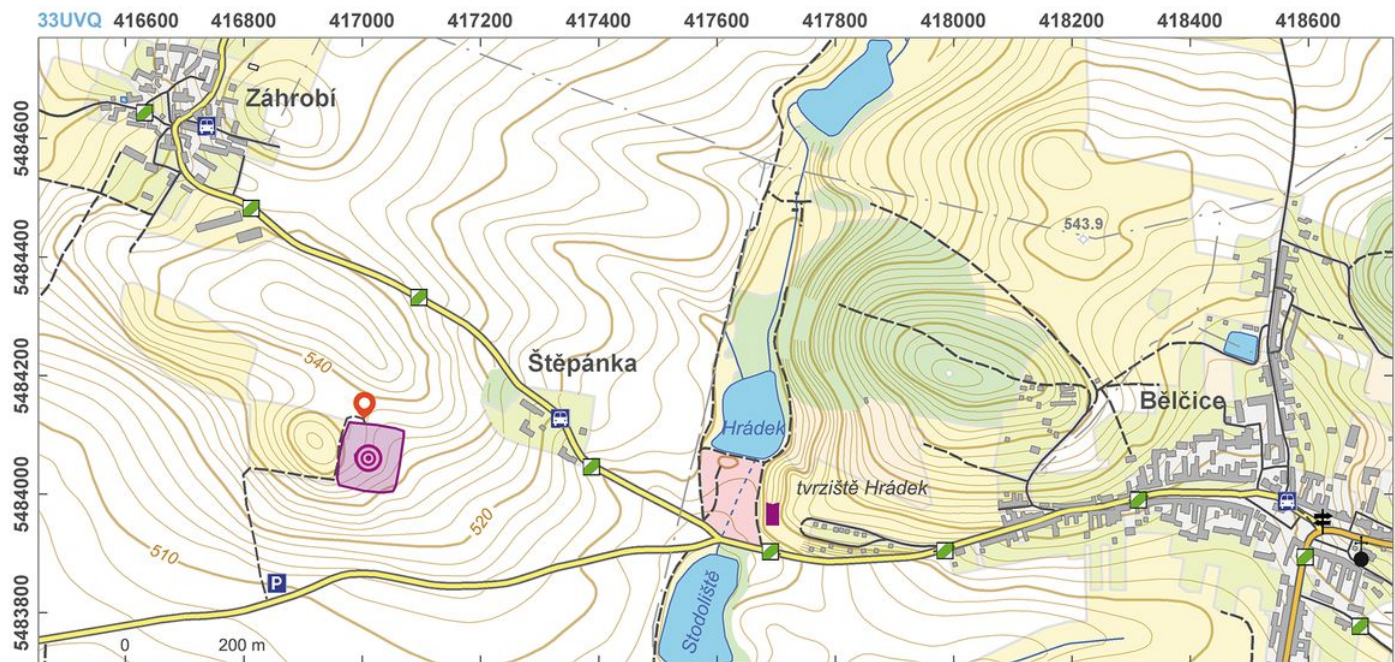


A rectangular enclosure (Viereckschanze in German) of the Late to Final La Tène Period. It was probably used as the residence of the local elite. The appearance of a powerful social group may be related to gold panning activities in nearby auriferous rivers. Preserved today are mainly the western and southern parts of the rampart; other parts are visible only in aerial photographs (crop marks).

**References:** Waldhauser – Fröhlich 1992; Michálek 1999a.

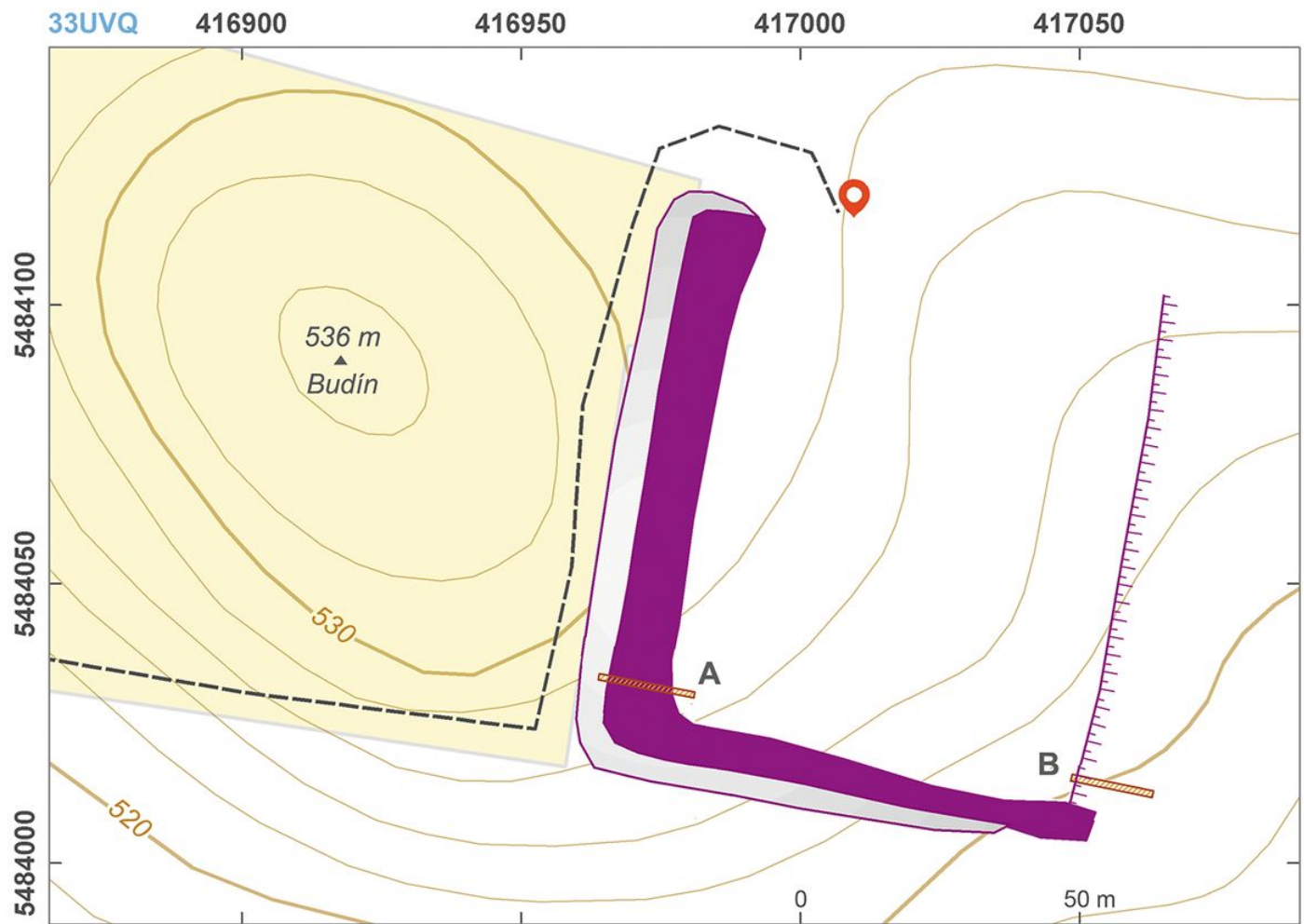
**Navigation points:** N 49°30'14.43", E 13°51'13.23" (north).

**Map notes:** A – archaeological trench through the bank; B – trench in the ditch (excavations in the 1980s).



Access map.

After Kuna et al. 2014.



Site plan.

After Kuna et al. 2014.





View from southeast in late summer.

Photo A. Danielisová, 2011.



Aerial view with the so-called crop marks.

Photo J. Michálek, 1999.





Aerial view – banks are at the bottom, right.

Photo M. Gojda, 2011.



Inner area of the quadrangular banks.

Photo A. Danielisová, 2011.