

Březina, Olomouc distr., Olomouc Region

Prehistoric site and medieval castle Špránek

(15000–11000 BC, 1000–500 BC, 13th–15th cent.)



The prehistoric site and medieval rock castle with the remains of lime kilns in the karst region of Javoříčko was occupied already in the Upper Palaeolithic and in the Bronze Age. The castle was founded around 1300 and was deserted by the end of the 14th century. The ground plan is determined exclusively by local circumstances. The finds stem from field walking. The remains of a lime kiln below the castle by the Špránek Brook are unique; it was erected in the course of the construction of the castle. In the brook valley, there are dozens of later lime kilns from the 16th–19th centuries grouped into batteries.

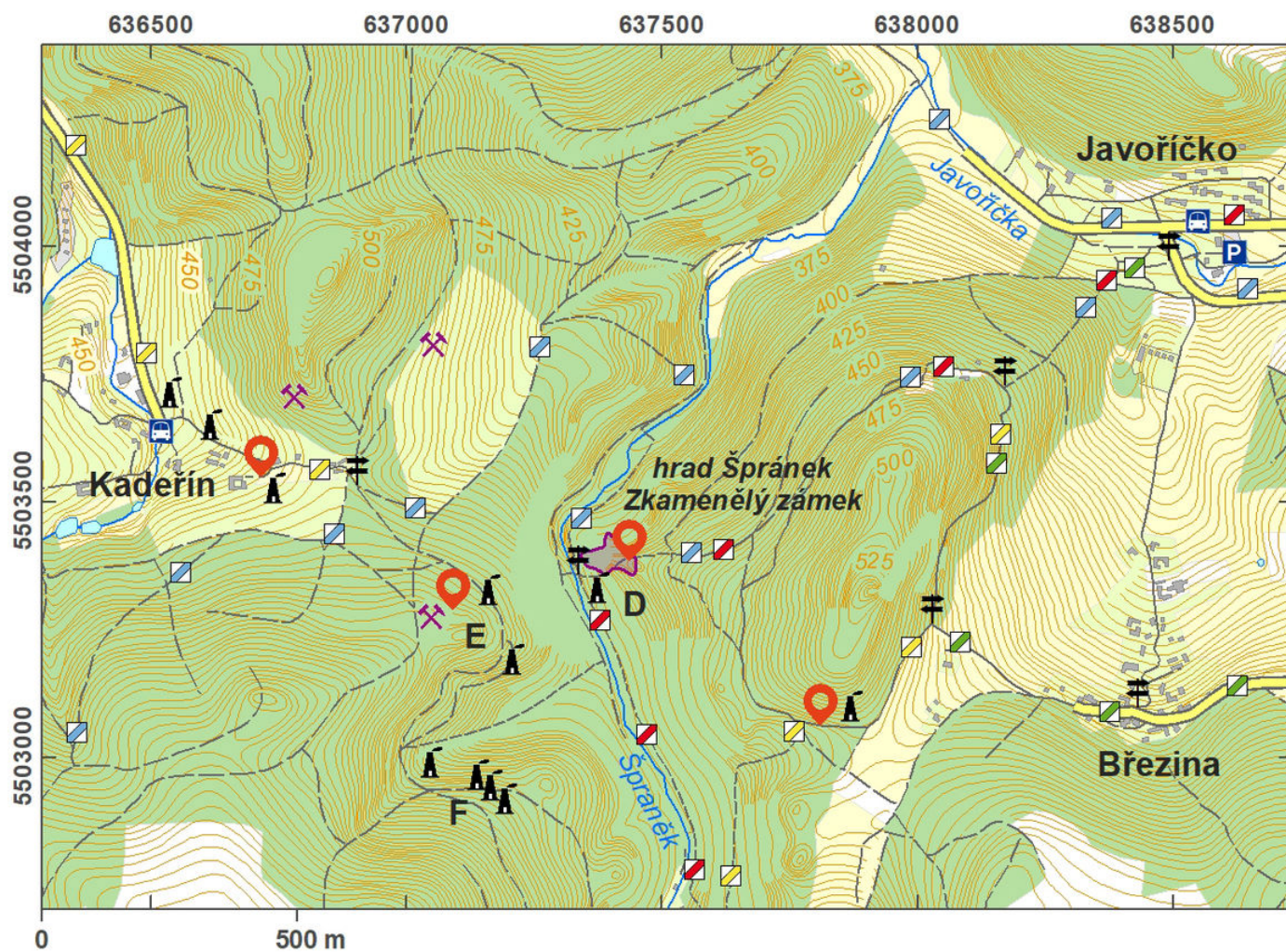
References: Svoboda a kol. 1994; Tymonová 1996; Plaček 2001; Faltýnek – Šlězár – Ženožička 2012.

Navigation point: N 49°40'02.46", E 16°54'16.83" (castle).

Map notes: A – castle; B – ditches; C – lower ward; D – remains of a lime kiln; E – area surrounding the Žákův lom

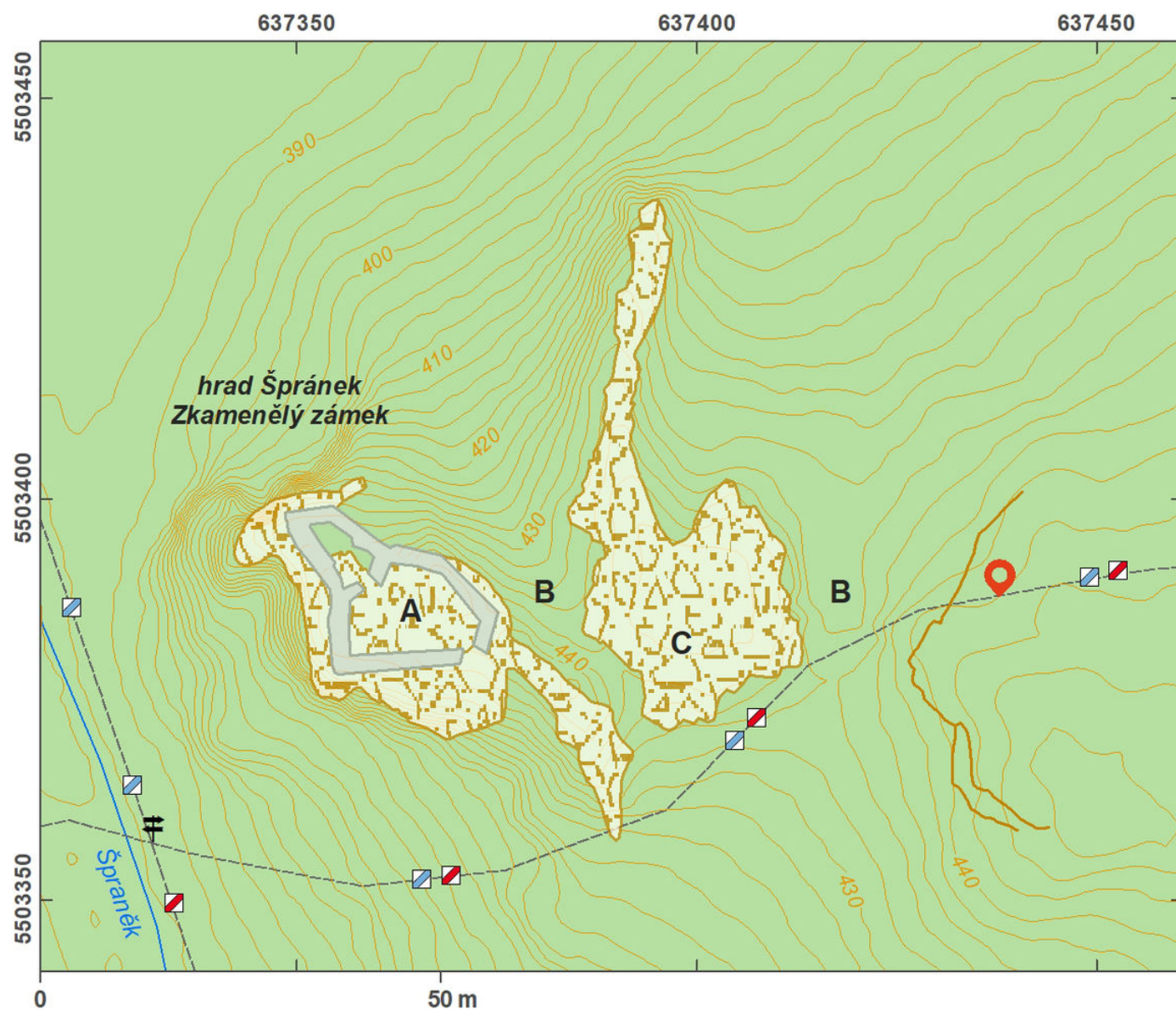
https://archatlas-32445064-production.k8s.sinfin.io/en/lokace/brezina_oc_hrad_spranek

quarry; F -- concentration of kilns at the 'Joklova z mole' site.



Access map/site plan.

After Tomášek et al. 2015.



Site plan.

After Tomášek et al. 2015.



Limestone shaft mine from 1931 in Kovářov, Rachava field, current state, view from the south.
Photo K. Faltýnek.



Navrátilova furnace in Blažov, village backyards of the farm No. 17, view from the north-east.
Photo K. Faltýnek.