

# České Lhotice, Chrudim dist., Pardubice Region

## Hillfort – oppidum

(Iron Age, 150–50 BC)



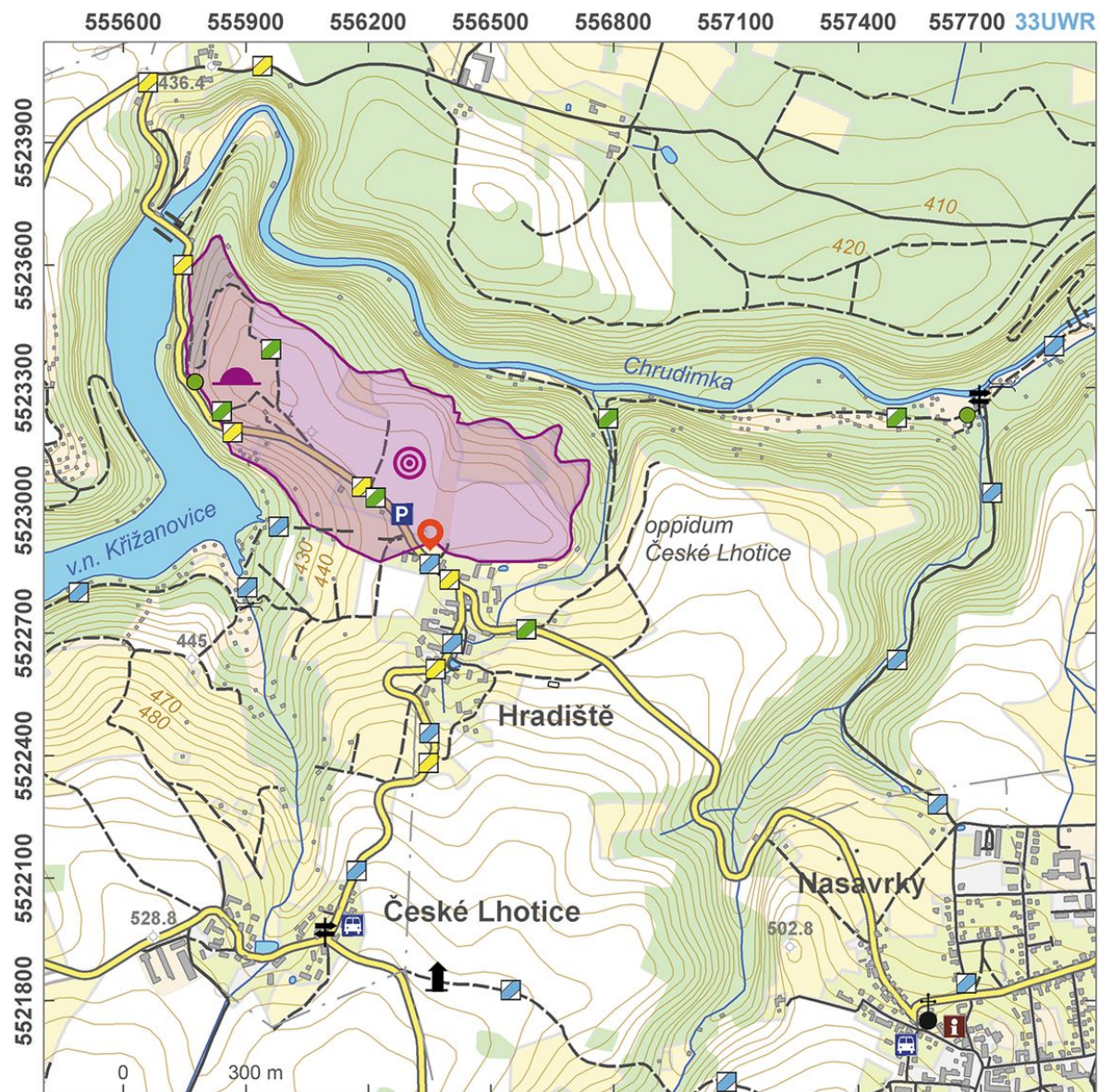
The only La Tène hillfort – oppidum in east Bohemia was investigated as early as in the 19th century, as was the case with the majority of similar sites. Evidence of specialised production of luxury objects and valuable imported artefacts were found at the oppidum. The hillfort probably formed a link between the 'Závist' oppidum in central Bohemia and the Staré Hradisko oppidum in Moravia. The triple line of fortifications is uniquely preserved between the acropolis and the suburb.

**References:** Lüssner 1857; Šnajdr 1911; Waldhauser 2001; Danielisová – Mangel 2008; Danielisová 2010.

**Navigation points:** N 49°51'21.29", E 15°47'00.58" (gate A).

**Map notes:** A – main 'pincer' type gate; B–D – gates; E – levelling of terrain into horizontal terraces; F – archaeological trenches in the fortifications; G – ditch carved into the rock.

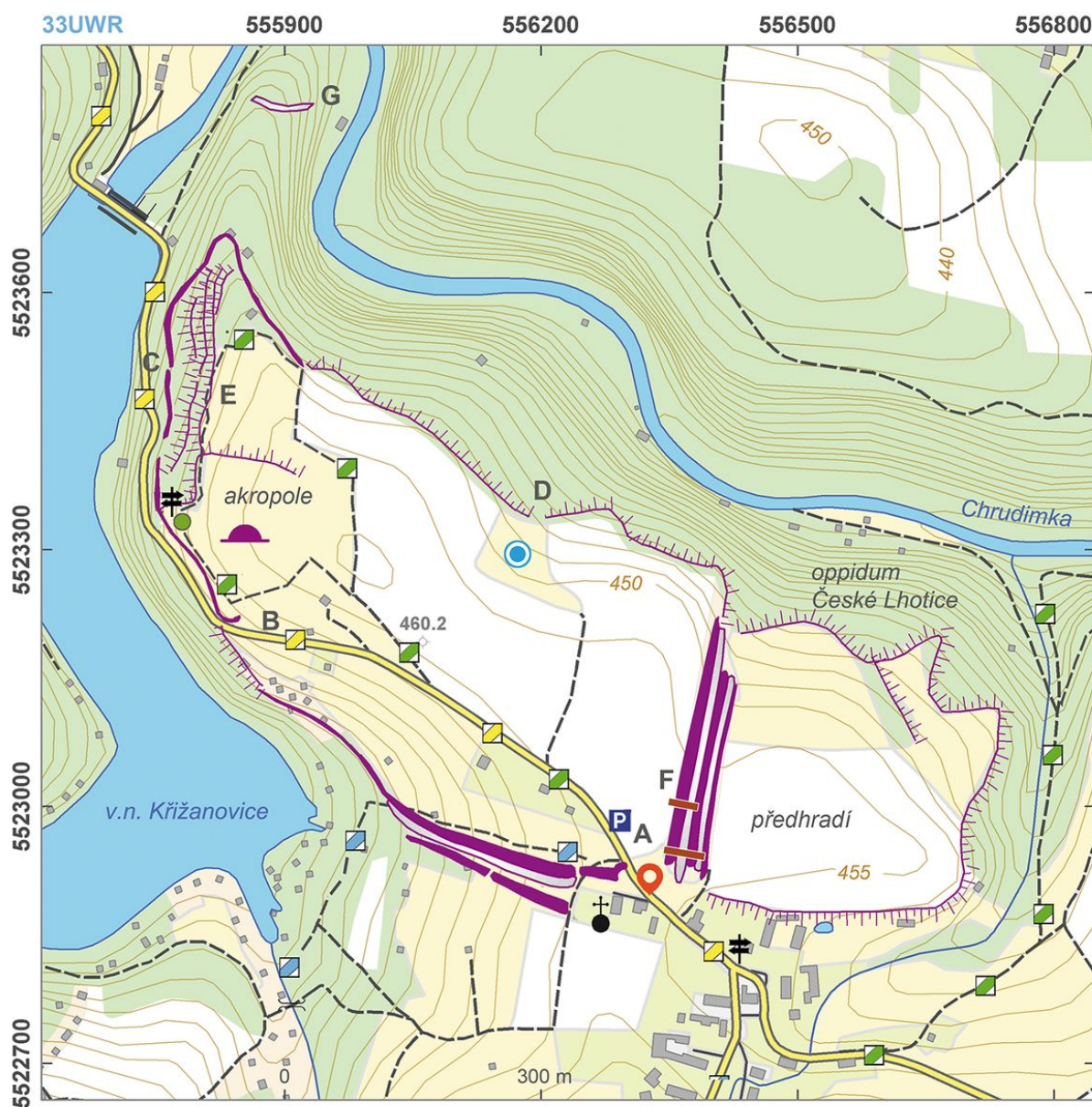




Access map.

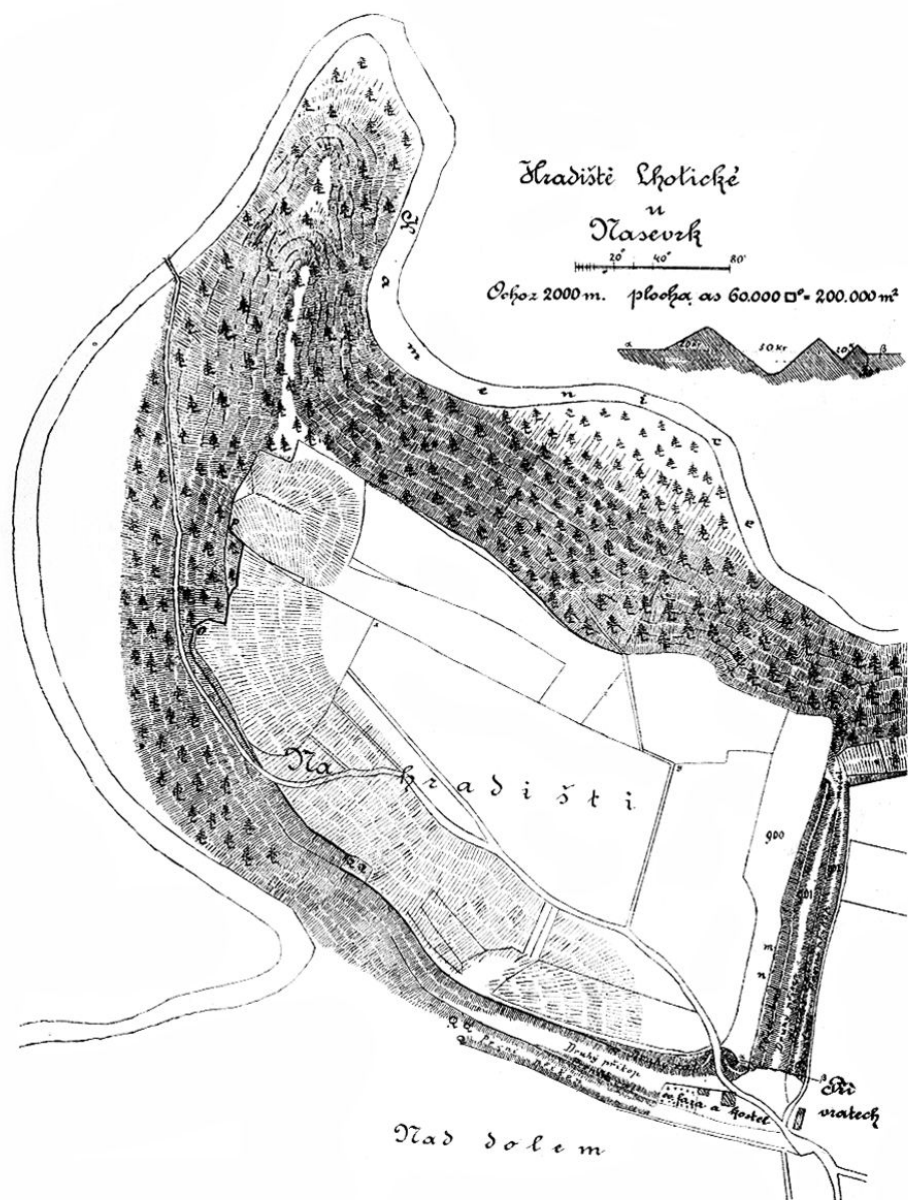
After Kuna et al. 2014.





Site plan.

After Kuna et al. 2014.



Plan of the oppidum.

After Šnajdr 1911.





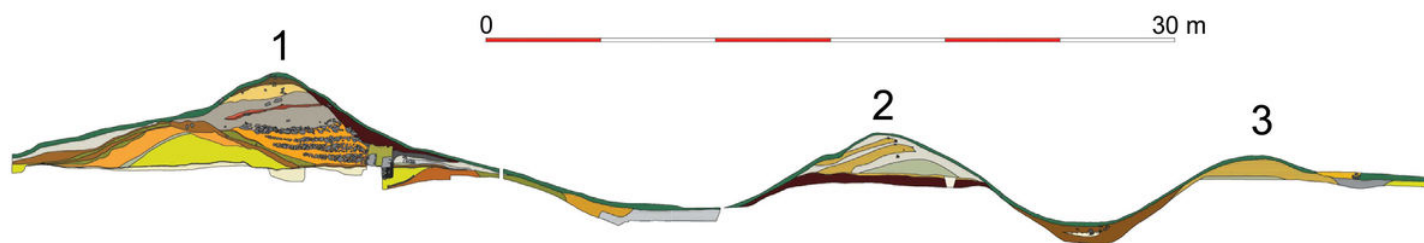
Southern part of the fortification.

Photo J. Marounek, 2007.



Fortification accentuated by a snow cover.

Photo 2004.



Cross-section of the triple fortification lines.

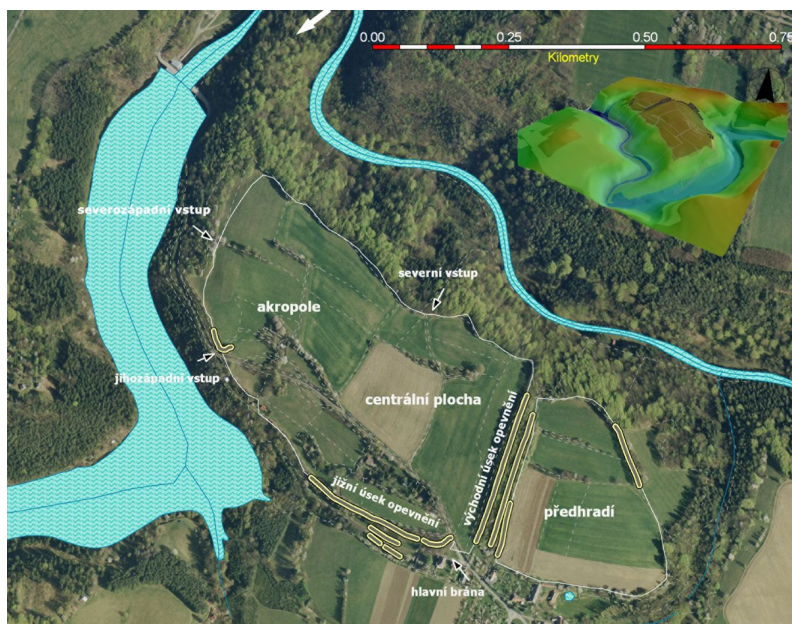
After Danielisová – Mangel 2008.



Aerial view of the oppidum.

Photo M. Gojda, 2012.





Aerial view of the oppidum with indicated parts.

After Danielisová – Mangel 2008.