

# Češov, Jičín dist., Hradec Králové Region

## Prehistoric and/or Early Medieval hillfort

(1st cent. BC, Early Medieval?)

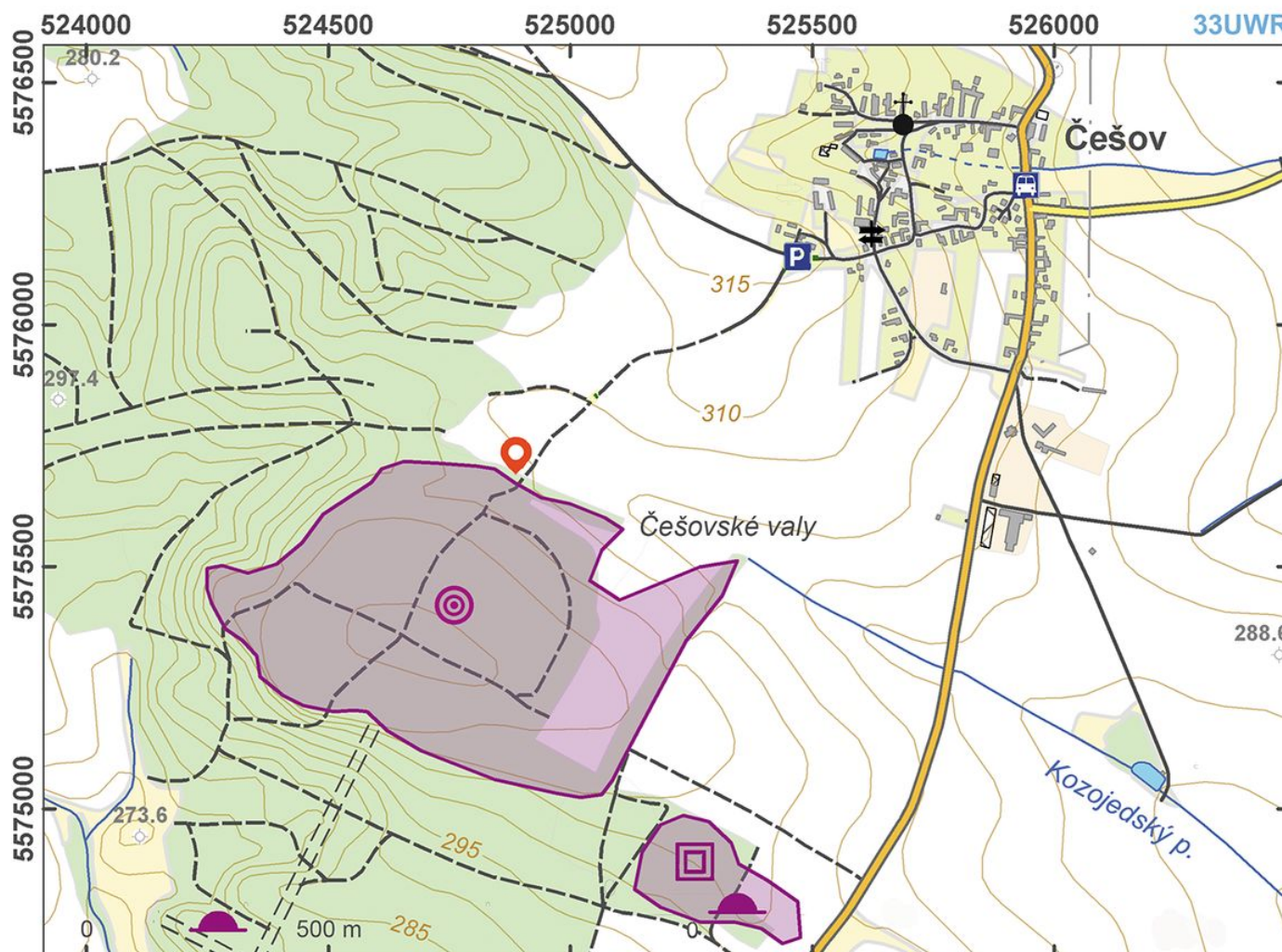


The hillfort known as 'Češovské valy' ('Češov Banks') has the most massive surviving earthworks in Bohemia. Due to the fact that no larger excavations have been conducted at the site, the dating of the fortification is unclear. The hillfort is most frequently dated to the La Tène Period but was obviously reused during the Early Middle Ages. It is also possible that the Swedes raised the ramparts during the Thirty Years' War. The original ramparts probably had a wood and earth structure and a front stone face.

**References:** Čtverák 2001; Čtverák a kol. 2003.

**Navigation points:** N 50°19'58.13", E 15°20'59.75" (north gate).

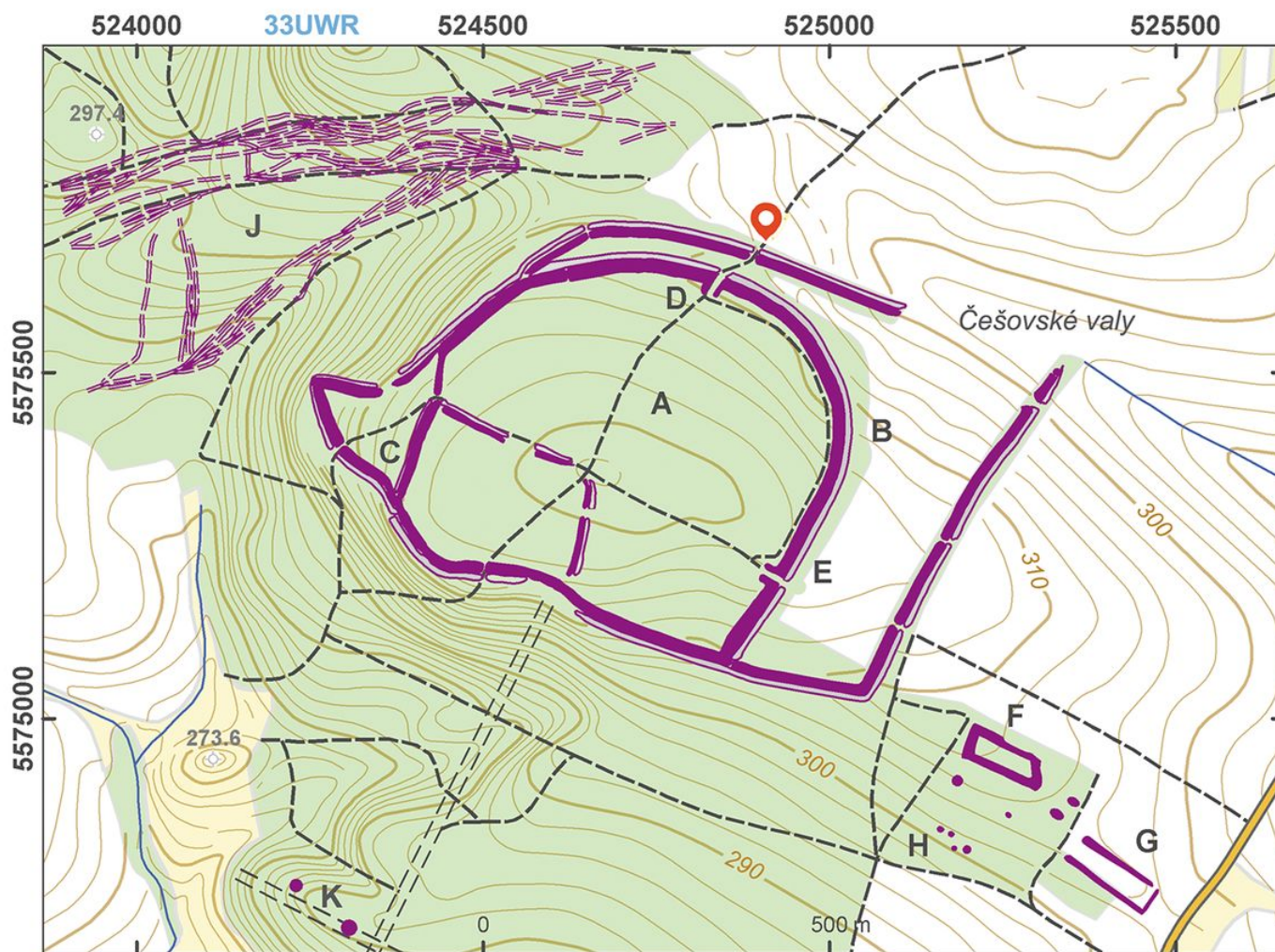
**Map notes:** A – acropolis with 'high banks'; B – annexe; C – 'Prasečí rynek' with a fortified spring; D–E – 'pincer' type gates; F–G – redoubts of the Thirty Years' War; H – barrow cemetery; J – hollow ways; K – two isolated barrows.



Access map.

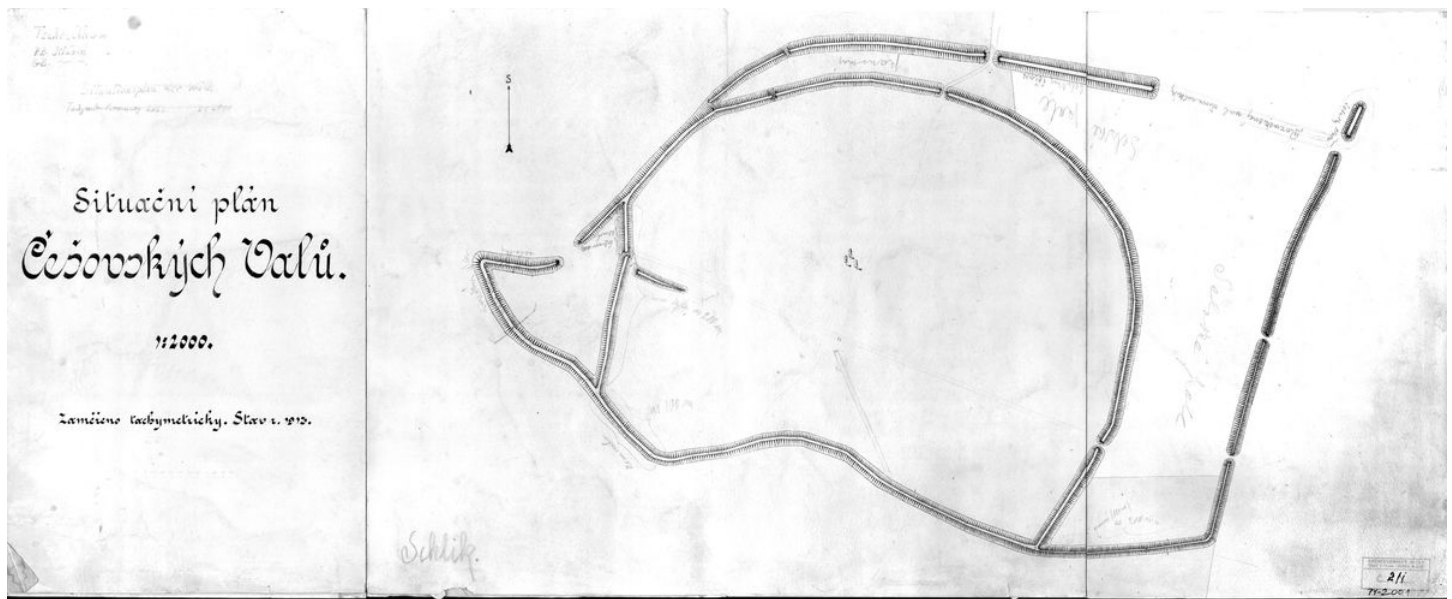
After Kuna et al. 2014.





Site plan.

After Kuna et al. 2014.



Groundplan of the 'Češovské valy' (1913).

Archives of the IoA, PY000002001.





Northern entrance to the hillfort's area.

Photo Z. Kačerová, 2013.



Memorial to the hunter Tomáš Svoboda.

Photo Z. Kačerová, 2013.





Southern fortification of the hillfort.

Photo J. Mařík, 2014.



Northern fortification, bank crown.

Photo J. Mařík, 2014.



Road between the monumental banks of Češov.

Photo M. Kuna, 2001.