

Drahoňův Újezd, Rokycany dist., Plzeň Region

Deserted Medieval and Early Modern village 'Rovný'

(14th–17th cent.)

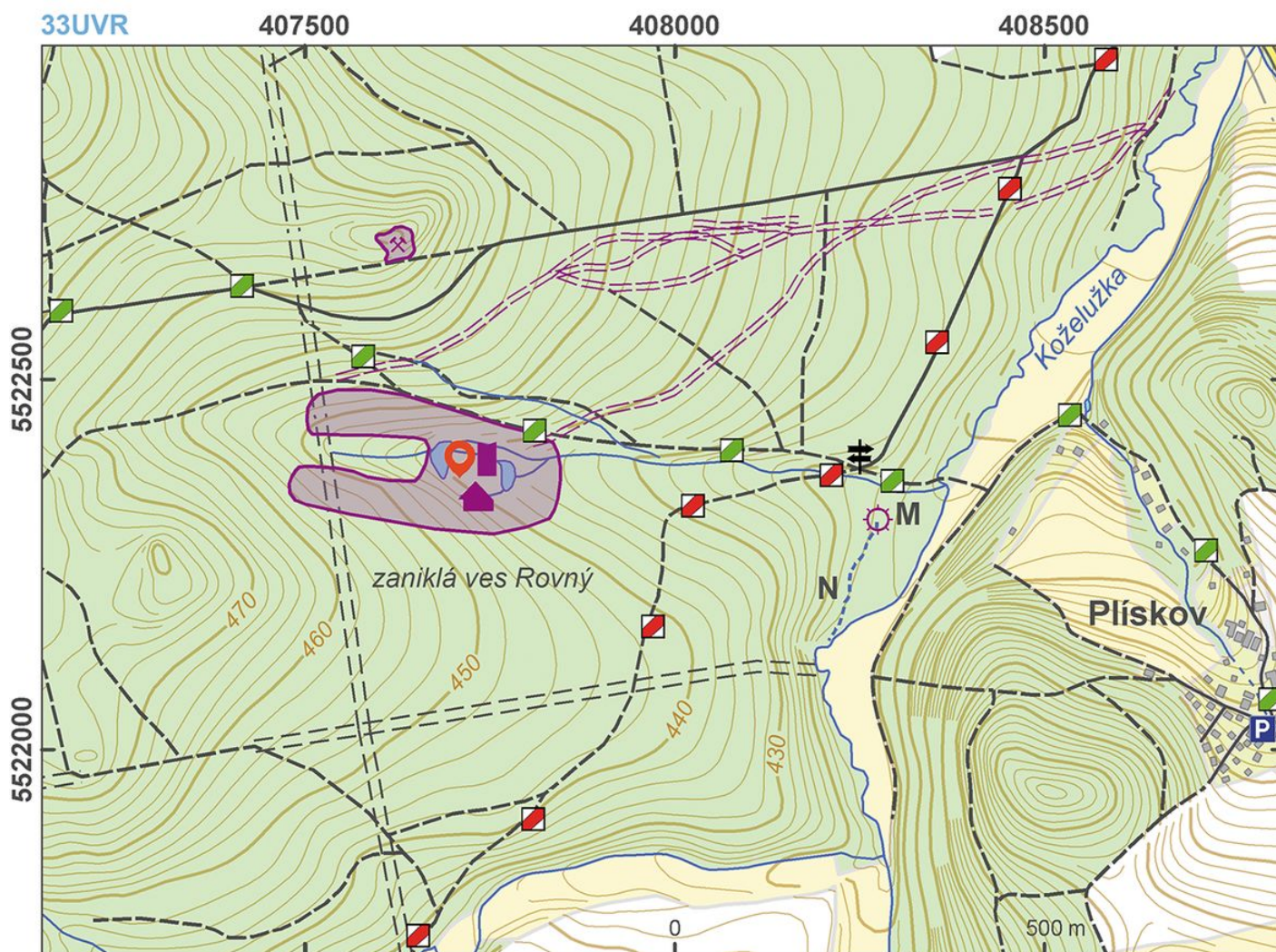


One of the best preserved settlement units of the Late Medieval and the Early Modern Periods in Bohemia. The deserted village of 'Rovný' is composed of eight homesteads, a fortified manor and 1-2 mills, including a cascade of four ponds related to the defence of the manor. The village was founded around the mid 14th century and was abandoned during the Hussite Wars; after being rebuilt in the 16th century, the village met its definitive end during the Thirty Years' War. Both parts of the village – the Late Medieval and the Early Modern – are clearly distinguishable in the field.

References: Anderle – Švábek 1992; Novák – Vařeka 2012; Vařeka 2014.

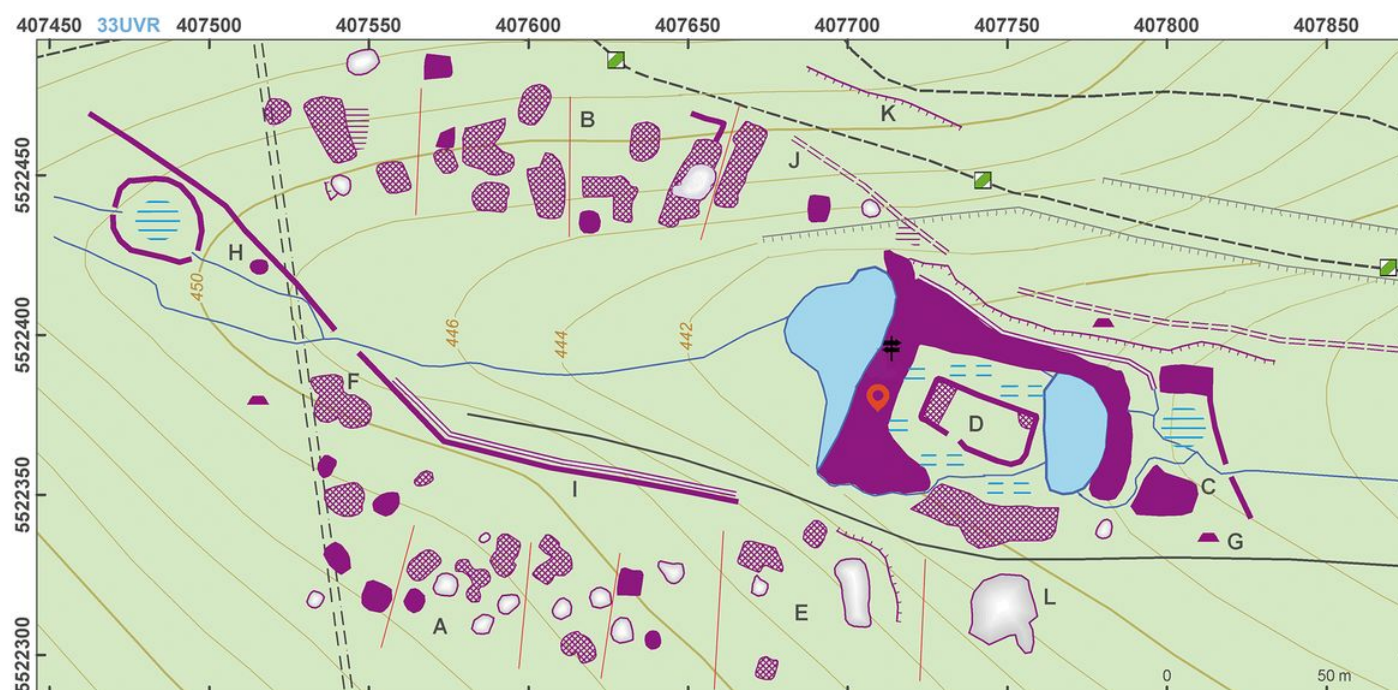
Navigation points: N 49°50'48.49", E 13° 42'58.77".

Map notes: A – remains of medieval homesteads; B – remains of Early Modern homesteads; C – mill(s); D – fortified manor; E – manorial farm; F – pits resulting from later mining activities; G – modern charcoal production platform; H – remnants of ore roasting furnace?; I – ditch and bank demarcating Early Modern meadows; J – hollow ways; K – field systems; L – quarry; M – pond bank; N – millrace.



Access map.

After Kuna et al. 2014.



Site plan.

After Kuna et al. 2014.



Pond above the fortified manor.

Photo M. Kuna, 2014.



Remains of a deserted farmstead.

Photo Z. Kačerová, 2013.



Extensive stone-faced cellar during excavation.

Photo D. Novák, 2014.



One of features from the Medieval part of the village.

Photo Z. Kačerová, 2013.



Homestead in Early Modern part of the village.

Photo Z. Kačerová, 2013.



Bank with a moat that divided the meadow from forest after village's desertation in Modern Times.

Photo Z. Kačerová, 2013.