

# Drnek, Kladno dist., Central Bohemian Region

## Deserted Medieval village 'Svídna'

(14th–15th cent.)

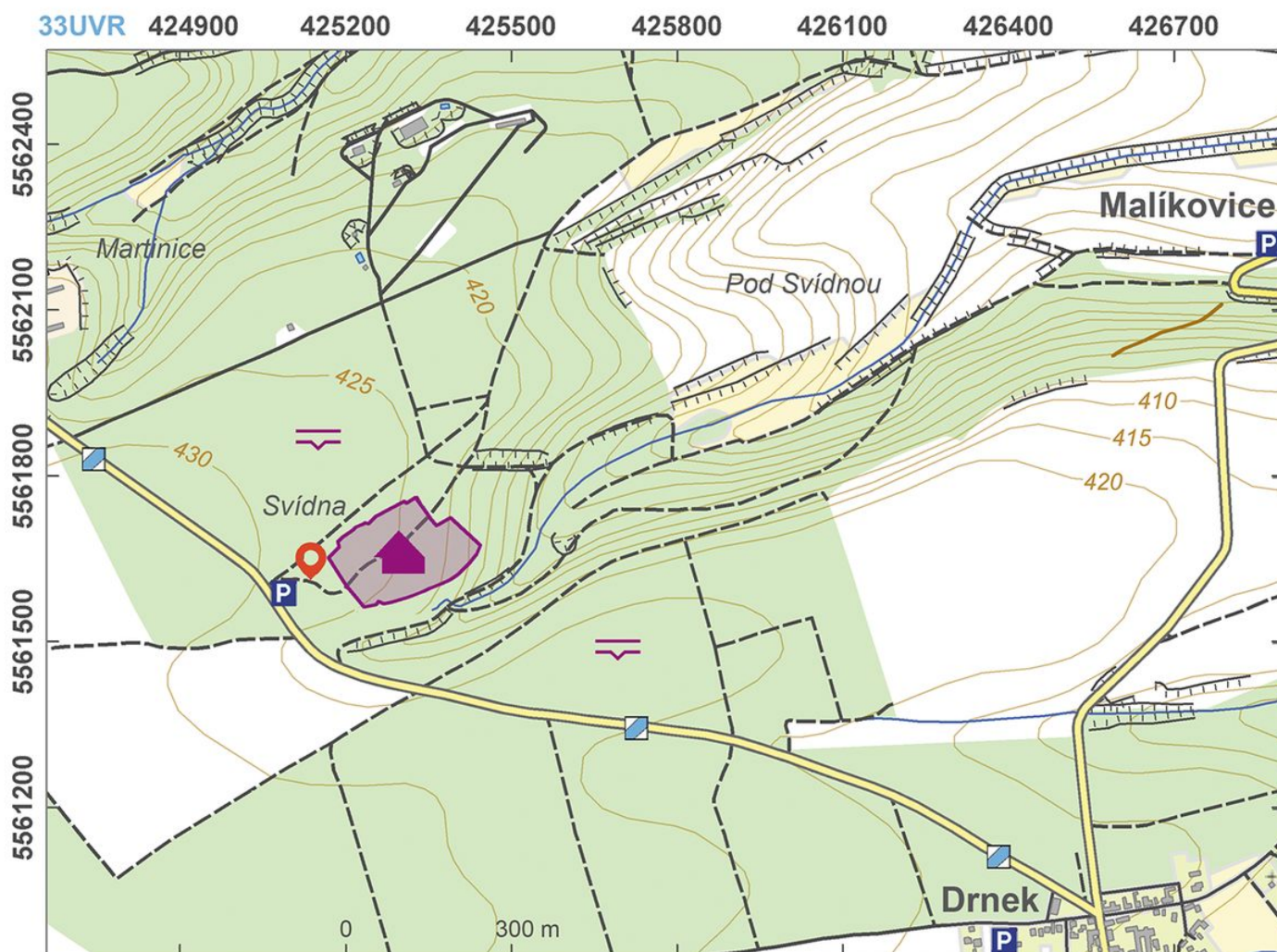


Deserted medieval village of 'Svídna' dates to the 14th and 15th centuries. Thanks to its well-preserved relics, 'Svídna' became a model site for the study of medieval villages in Bohemia. The village was composed of fourteen homesteads, including three-compartment houses made completely of stone, farm buildings, gardens and connected fields. The entire village was investigated using non-destructive archaeological methods, and three homesteads were also excavated in the 1960s and 1970s.

**References:** Smetánka 1988; Pešta 2000.

**Navigation points:** N 50°12'06.28", E 13°57'05.67" (west).

**Map notes:** 1–14 – plots of the original homesteads.



Access map.

After Kuna et al. 2014.





Site plan.

After Kuna et al. 2014.





Homestead Nr. 14, walls.

Photo M. Kuna, around 2000.



Homestead Nr. 14, walls.

Photo M. Kuna, around 2000.





Medieval deserted village ruins.

Photo Z. Kačerová, 2014.



Surface in the deserted village.

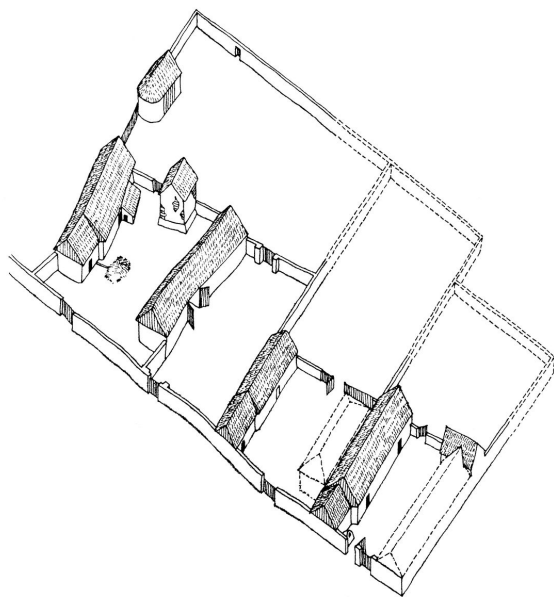
Photo Z. Kačerová, 2014.





Unstable terrain covered by periwinkle - probably remains of a Medieval garden.

Photo M. Kuna, around 2000.



Drawn reconstruction of homesteads 1–3.

After Smetánka 1988.



Photoplan of houses Nos. 1 and 2 during archaeological field work.  
Archives of the IoA, PY000228019.



A visit on the site.  
Photo M. Cháb.