

Dýšina, Plzeň-City dist., Plzeň Region

Prehistoric barrow cemetery v trati Nová Huť

(1600–1300 BC, occasionally later)

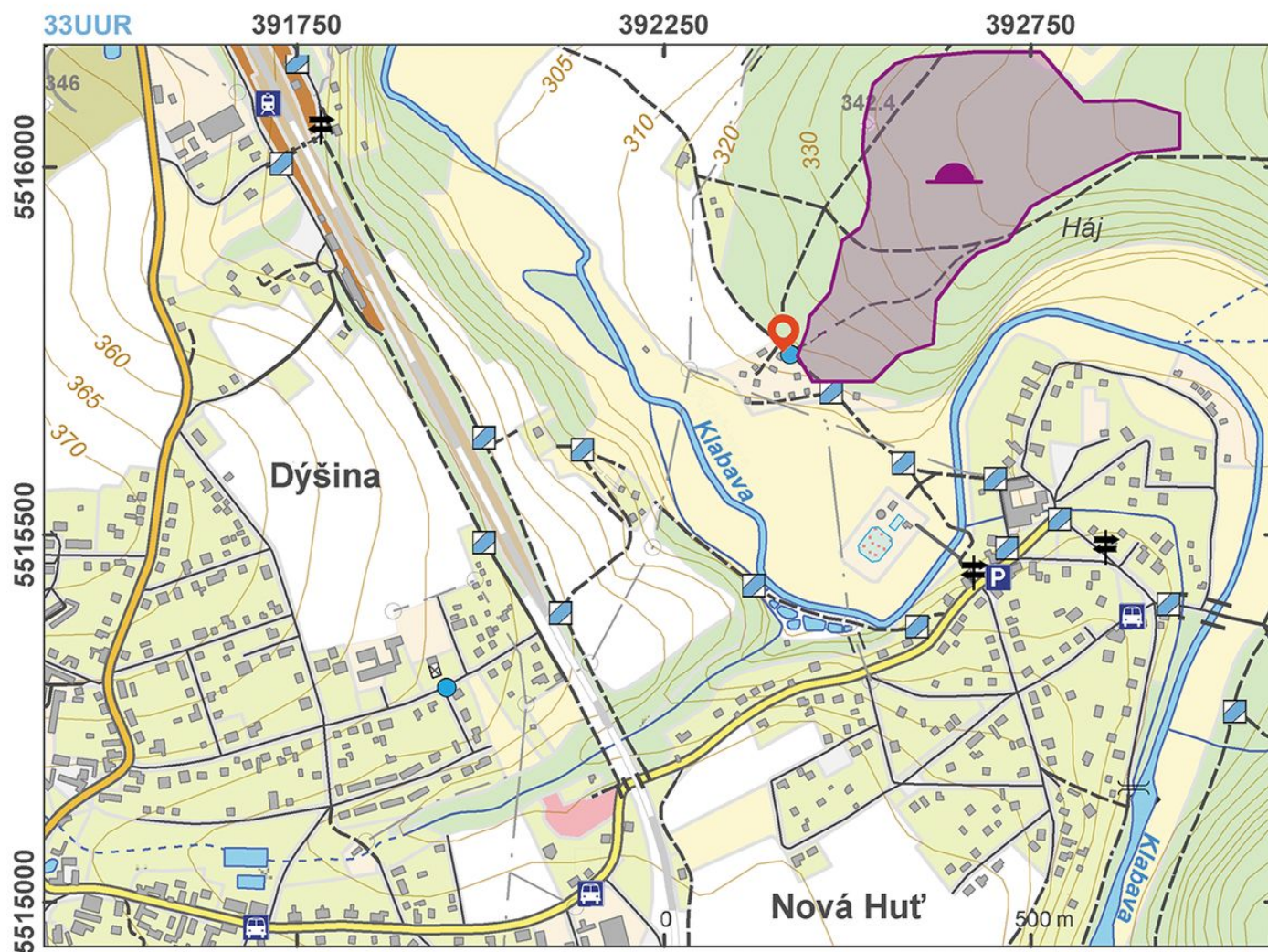


A barrow cemetery in the forest section of 'Nová Huť' was primarily used during the Middle Bronze Age (Tumulus culture). The site is located in a region with a large number of known barrow cemeteries, most of which have not, however, survived until today. The cemetery at 'Nová Huť' is an exception. Although the majority of barrows in this funerary area were investigated as early as in the 19th century, 113 mounds were still identifiable in the 1950s. The barrows had an earth and stone construction and produced finds of ceramic vessels, bronze weapons and jewellery, including several gold artefacts.

References: Smolík 1878; Rybová – Šaldová 1958; Čujanová-Jílková 1970; Čtrnáct 1975.

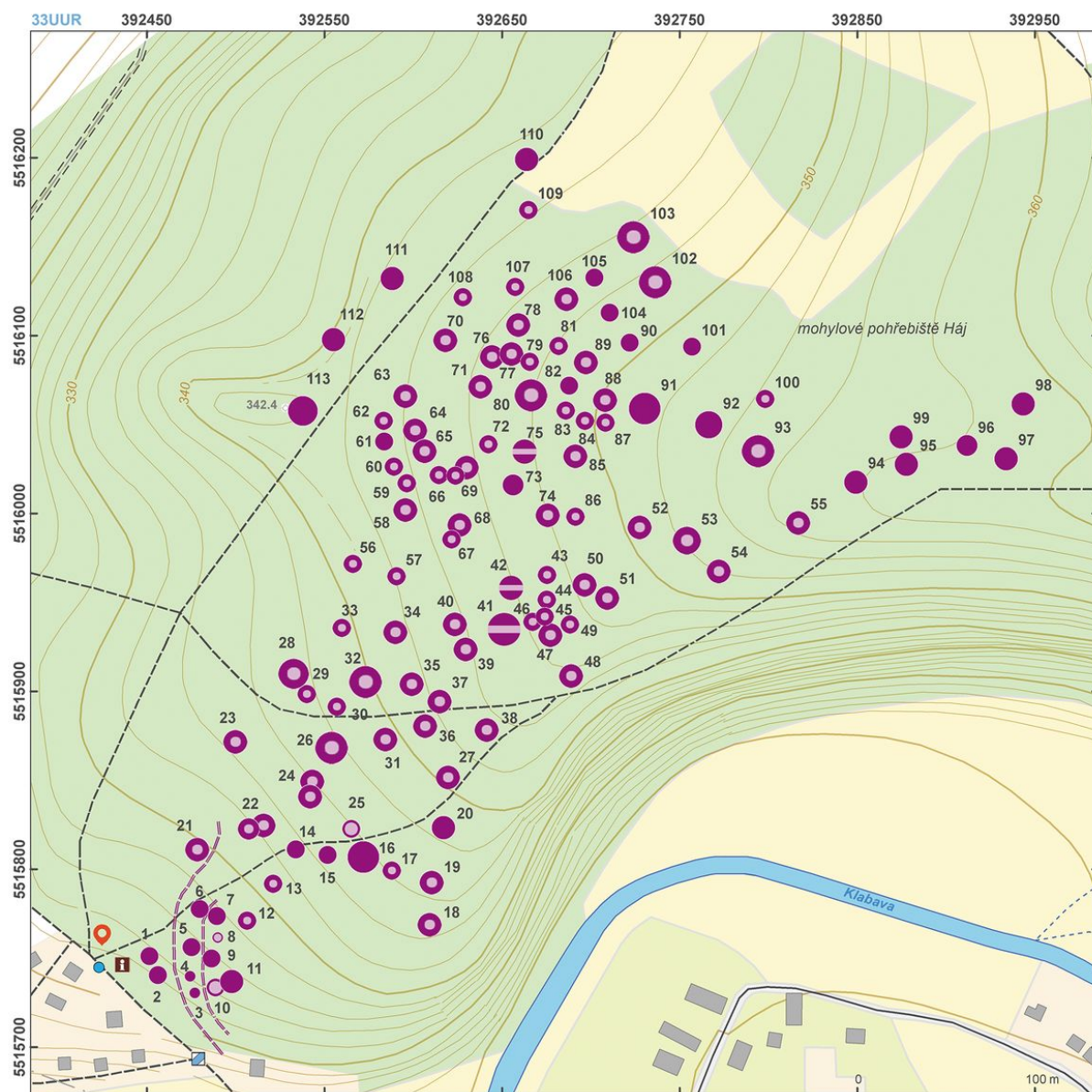
Navigation points: N 49°47'04.45", E 13°30'19.91" (southwest).

Map notes: 1–113 – barrows.



Access map.

After Kuna et al. 2014.



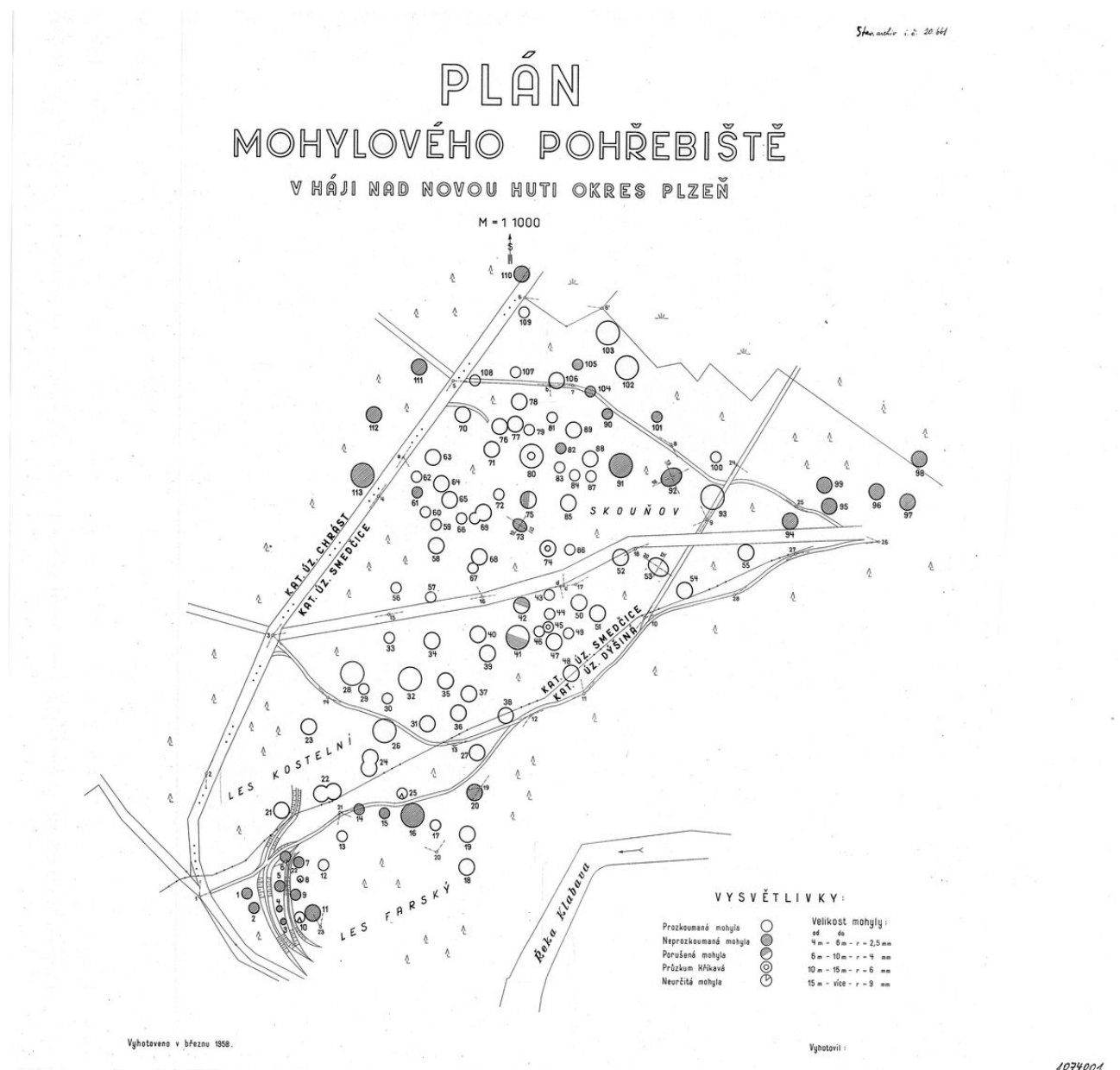
Site plan

After Kuna et al. 2014.



Plan of barrow cemeteries around Klabava river. F Křikava, around 1880.

After Rybová – Šaldová 1958.



Plan of the barrow cemetery in Nová Huť site in 1958.

Archives of the IoA, PY001074001.



A prominent barrow near the path behind the information board.

Photo Z. Kačerová, 2014.



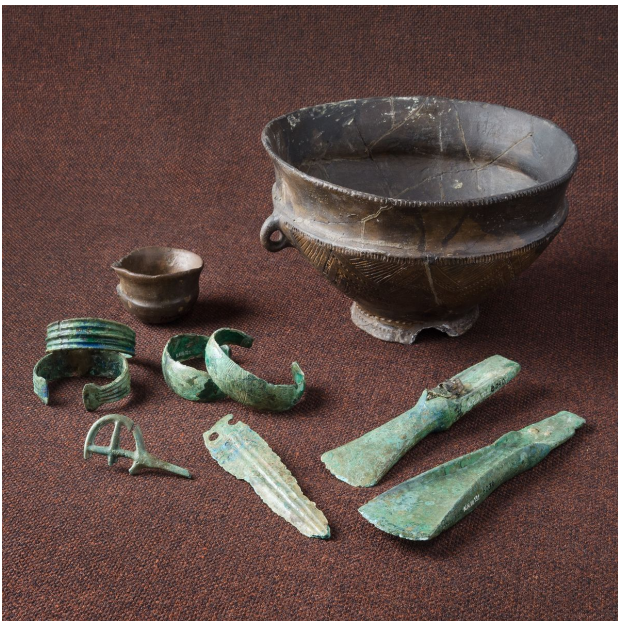
One of the largest barrows on the site.

Photo Z. Kačerová, 2014.



A barrow near the access road.

Photo M. Langová, 2012.



Finds from the barrow Nr. 3, excavated in 1907–1908.

Museum of western Bohemia in Pilsen. Photo Z. Kačerová, 2014.

Information board on the barrow cemetery.
Photo Z. Kačerová, 2014.