

Jedomělice, Kladno dist., Central Bohemian Region

Medieval fortified manor and the deserted Medieval village 'Ostrov'

(14th–16th cent.)

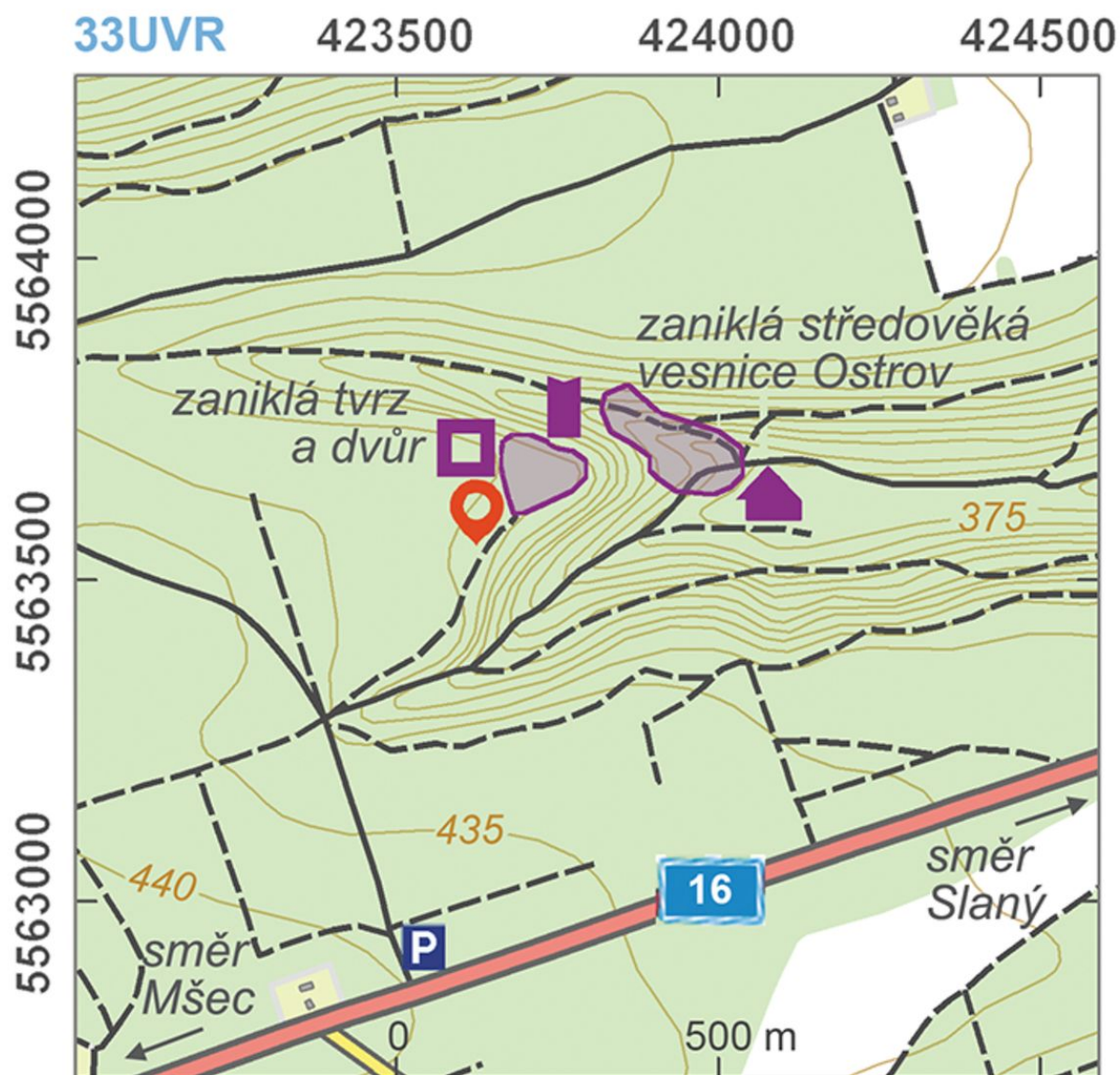


Deserted medieval settlement complex of 'Ostrov' existed from the 14th to the end of the 15th century. It consists of a fortified manor with a bailey and an adjoining village, well illustrating how medieval society functioned. The village is composed of five homesteads alongside the road; the tower-type fortified manor of the village owner stood on an elevated promontory, with a bailey (manorial farm) next to it.

References: Smetánka a kol. 1979; Vytlačil 2006.

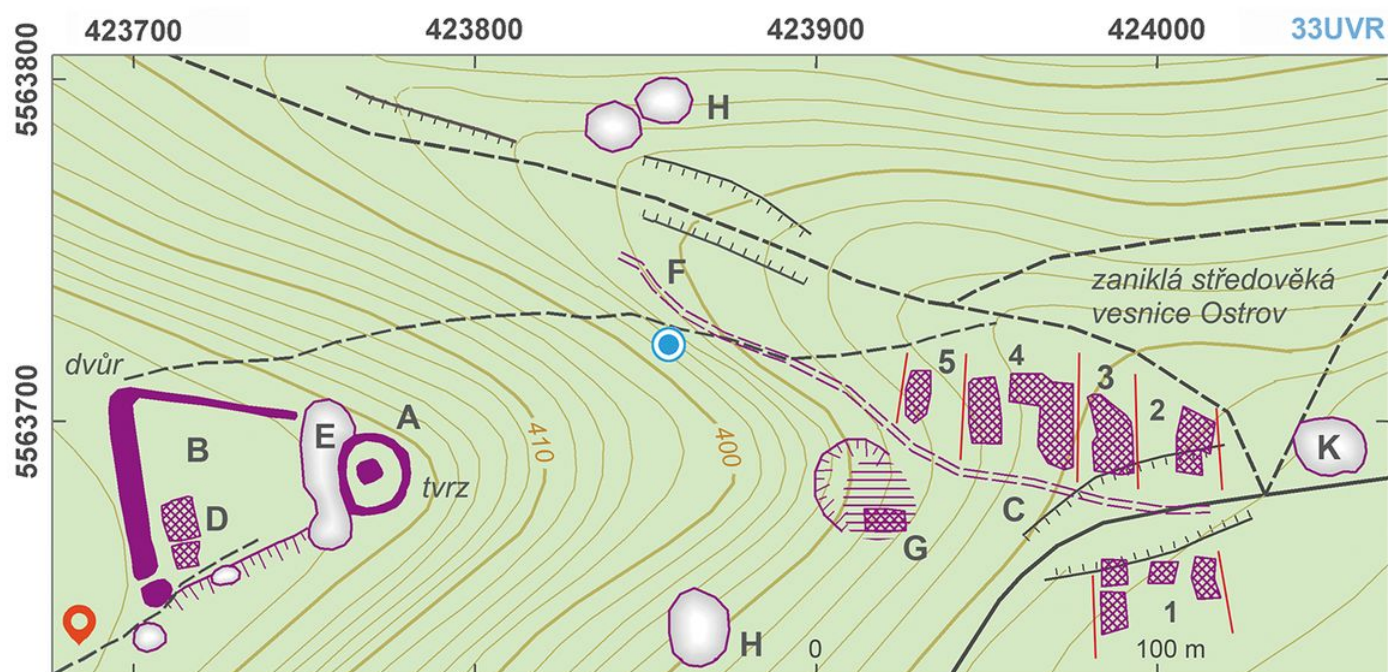
Navigation points: N 50°13'12.02", E 13°55'48.88".

Map notes: A – fortified manor; B – bailey; C – village; D – a farm structure, probably a granary; E – ditch between the fortified manor and its bailey; F – original path; G – remains of a building of an unknown function; H – medieval mining pits; K – Early Modern mining pit; 1–5 – village homestead plots.



Access map.

After Kuna et al. 2014.



Site plan.

After Kuna et al. 2014.



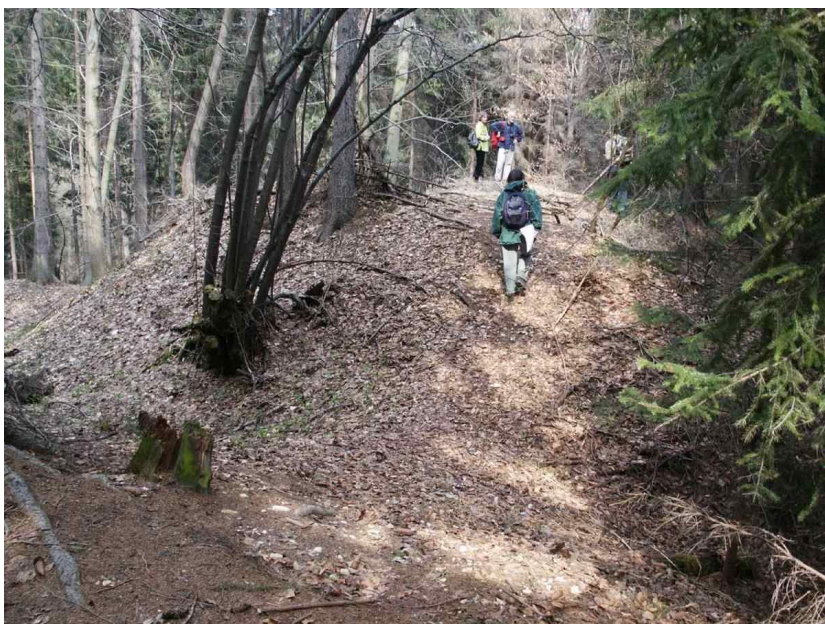
Ditch dividing the fortified manor and the farmstead.

Photo Z. Kačerová, 2013.



Fortified manor, taken from the homestead.

Photo M. Kuna, 2012.



Fortified manor Ostrov.

Photo M. Cháb, 2006.



Remains of a granary in southwestern corner of the farmstead, near the entrance.

Photo M. Kuna, 2012.



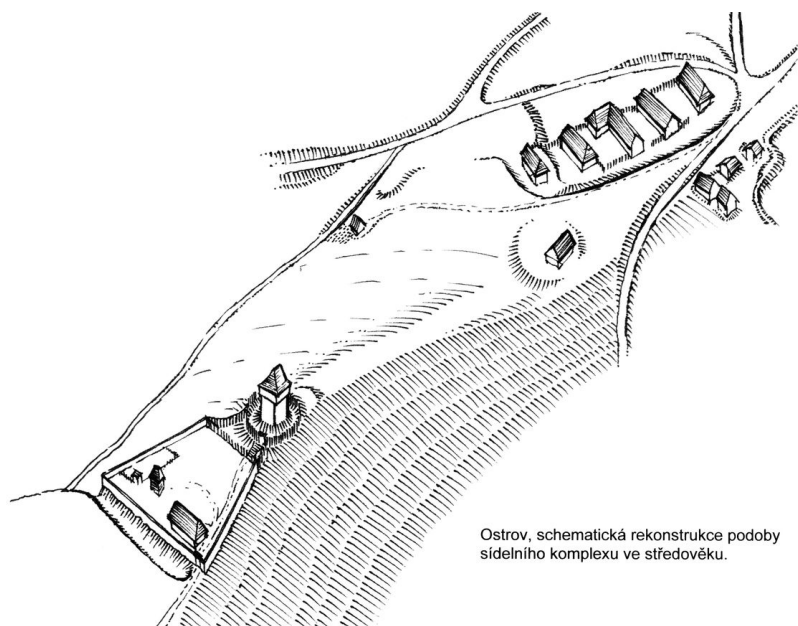
Linear surface feature, relict of a homestead enclose.

Photo M. Kuna, 2012.



Features in the deserted village.

Photo Z. Kačerová, 2013.



Ostrov, schematická rekonstrukce podoby
sídelního komplexu ve středověku.

Schematic reconstruction of the fortified manor, farmstead and village.

After Vytlačil 2006.