

# Líšnice u Mohelnice, Šumperk distr.,

Medieval trail, town Radkov and castle Líšnice

(Early and High Middle Ages)



The road corridor Moravská Třebová–Mohelnice is composed of deserted hollow ways, relics of far-distance roads from the Middle Ages. The first written mention of Moravská Třebová is related to 1234. In the 2nd half of the 13th century, Boreš of Reisenburk, the emphyteutic tenant of this territory, founded Radkov, a fortified town with castle, inhabited until the 14th century. Líšnice Castle was established in the 13th century to control one of the branches of the road from Moravská Třebová to Loštice and was deserted already in the mid-15th century. From the small town of Radkov and its castle, an up to 30-m-broad moat carved into the rocks, relics of sunken dwellings, ruins of the fortification walls and of the system of hollow ways, which sometimes form a bundle of up to 40 routes, have survived. Only fragments of the upper ward of Líšnice Castle are preserved, the entrance tower and a mighty, up to 17-m-broad moat.

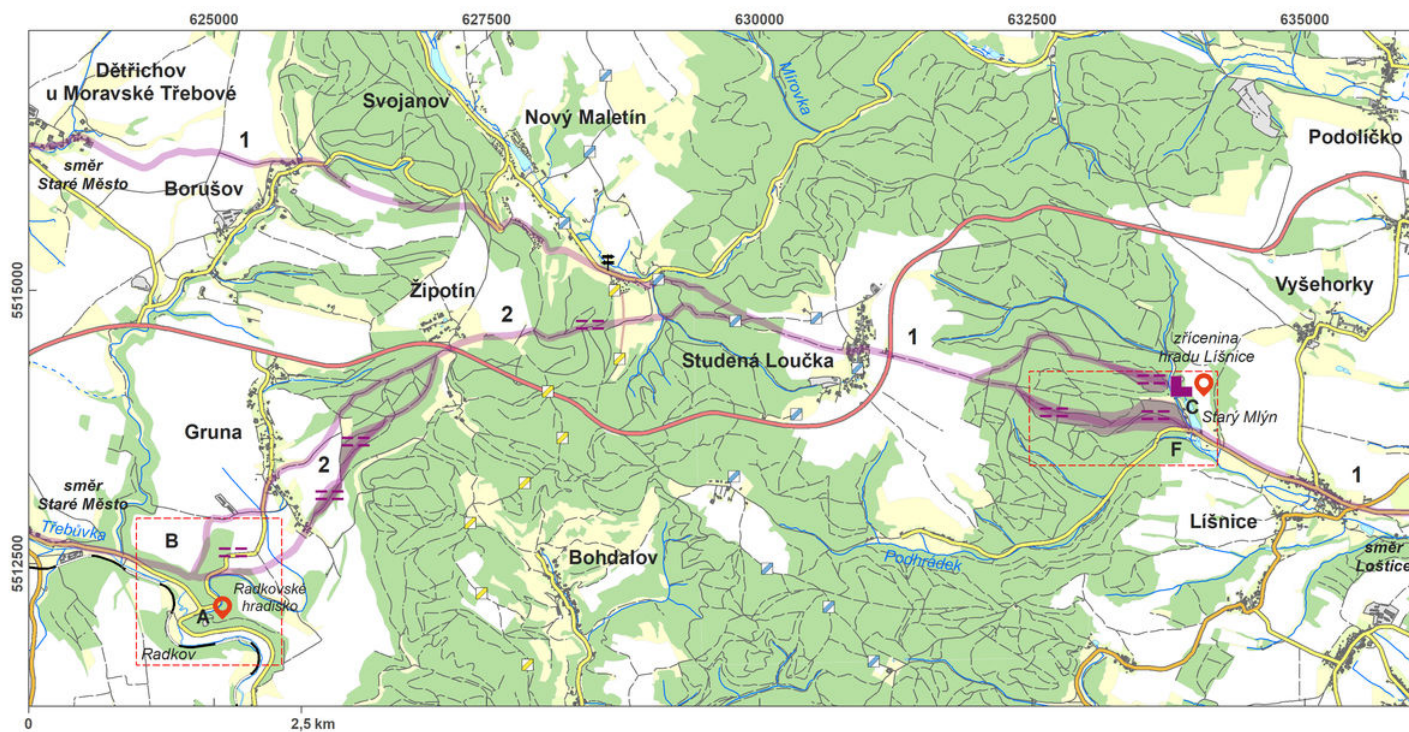
**References:** Nekuda – Unger 1981; Plaček 2001; Bolina – Němcová – Šlězár 2008; Martínek a kol. 2013; [www\\_Líšnice u Mohelnice](http://www.LisniceuMohelnice.cz).

**Navigation point:** N 49°44'49.81", E 16°44'06.24" (Radkov).

**Map notes:** A – remains of the small town and fortification of Radkov; B, D, E – systems of hollow ways; C – Líšnice Castle; F – ford.

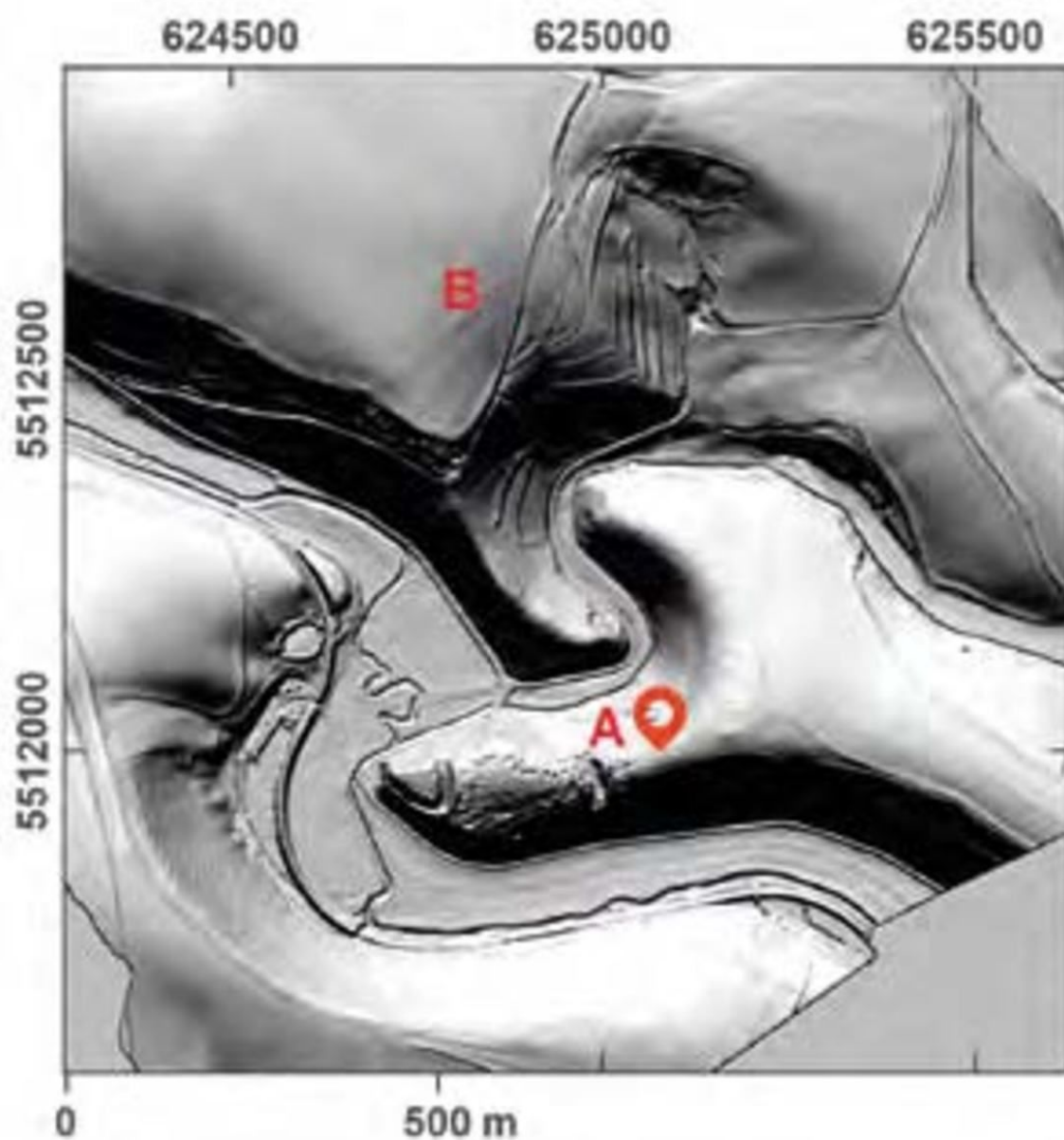
LLS pictures: C – Líšnice Castle; D – Podhrádek; E – network of hollow ways; F – mill and end point of the hollow ways.





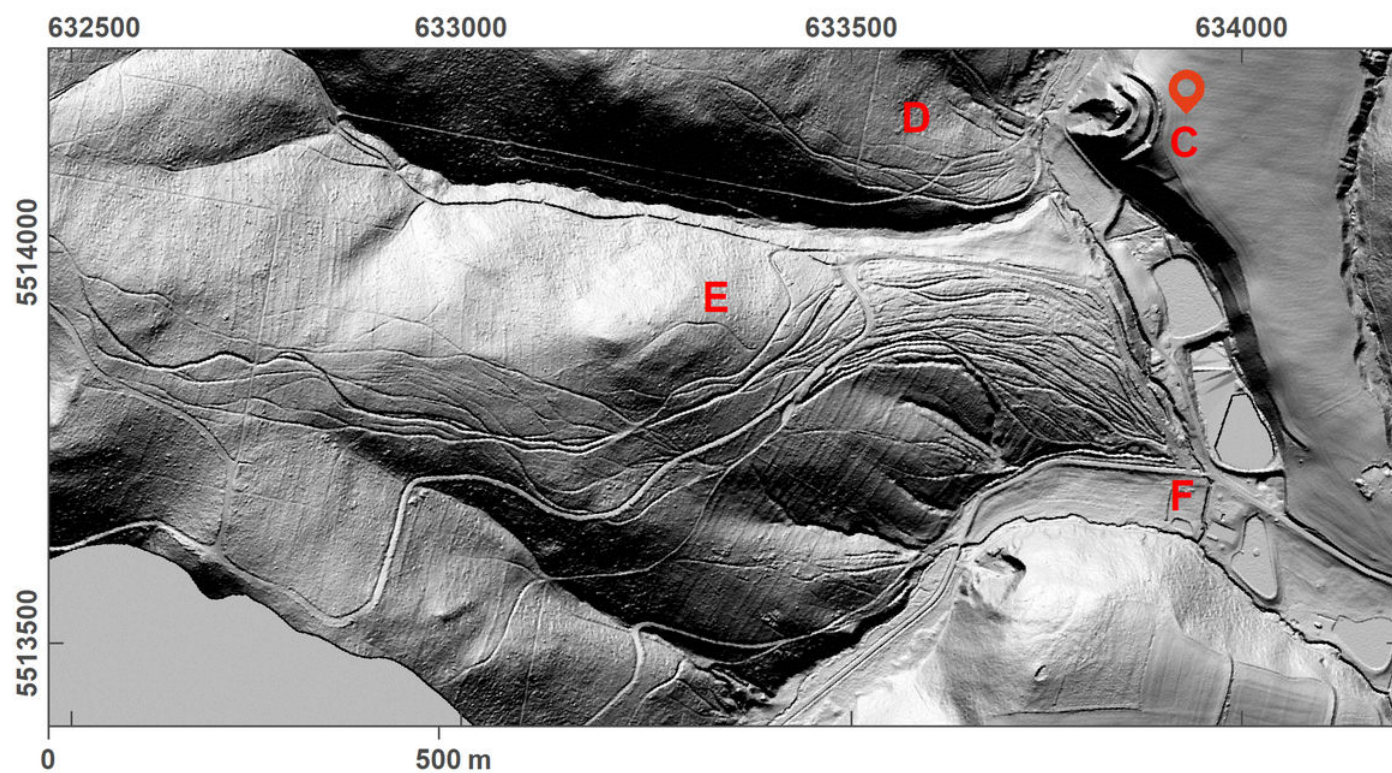
Access map/site plan.

After Tomášek et al. 2015.



Site plan – LLS picture.

After Tomášek et al. 2015.



Site plan – LLS picture.

After Tomášek et al. 2015.





Líšnice Castle, view of the upper ward, moat and earthwork.

Photo P. Šlézar.



Bundles of hollow ways in the forest above Nový Mlýn ('New Mill').

Photo P. Šlézar.