

Luděřov, Olomouc distr., Olomouc Region

Early modern military fortification

(the 1st half of the 17th cent.)

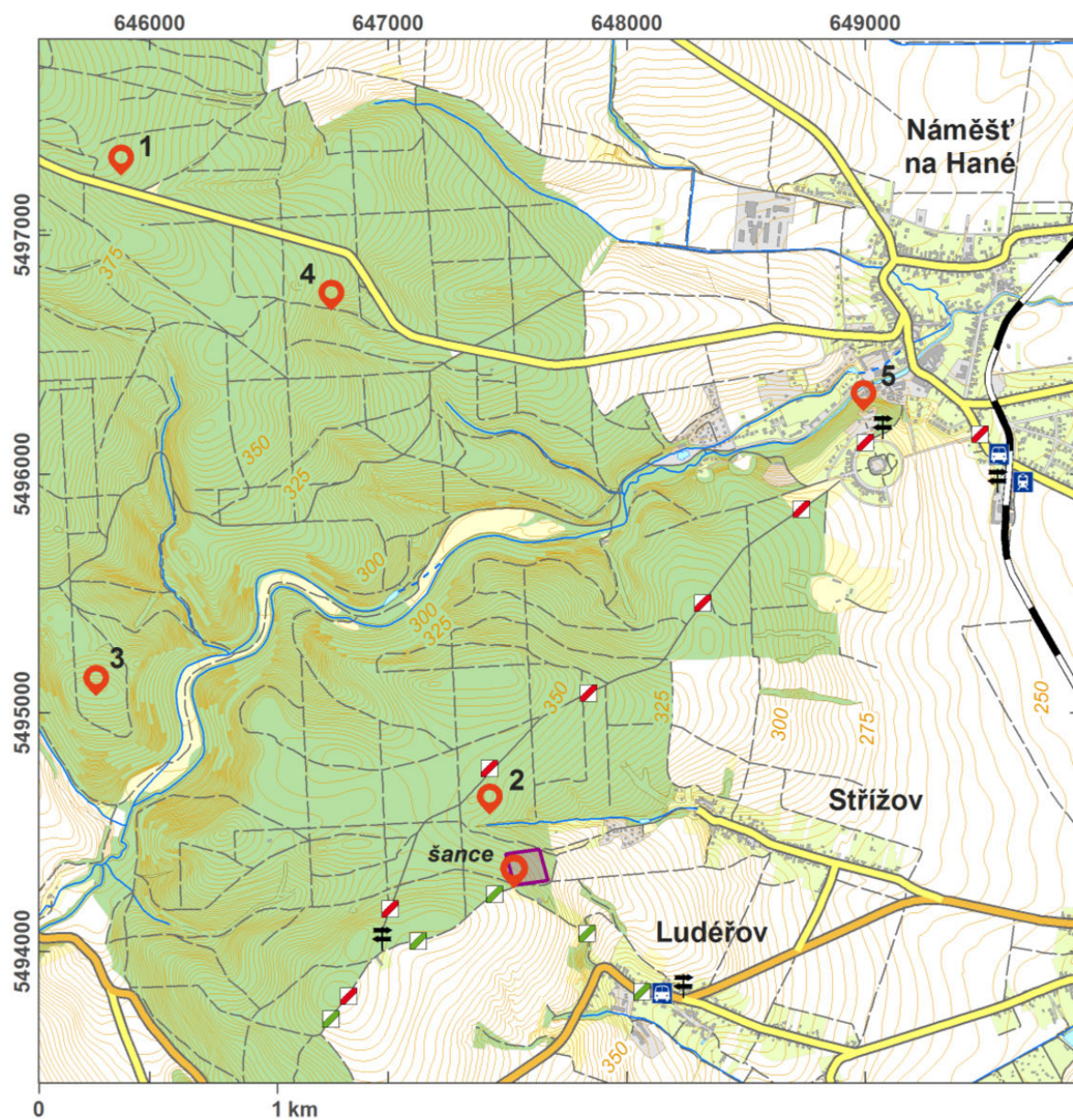


Despite being sometimes interpreted as a 'Viereckschanze', an enclosed rectangular area of the La Tène period, it is most probably the remains of a field fortification from the Thirty Years' War with well-preserved witnesses of a modern period military conflict. Nearby, there is another field fortification with similar state of preservation and features. The redoubt near Luděřov is formed by an earthwork with inner surface over 1–2 m and a V-shaped ditch 3–4 m below the summit of the earthwork. The modern admirers of Celtic culture and defenders of the prehistoric origin of the feature have erected a menhir. The area is covered with coniferous forest and bushes.

References: Čižmář 1973, 1991; Bolina – Šlězár 2006; Cendelín 2007; Martínek a kol. 2013.

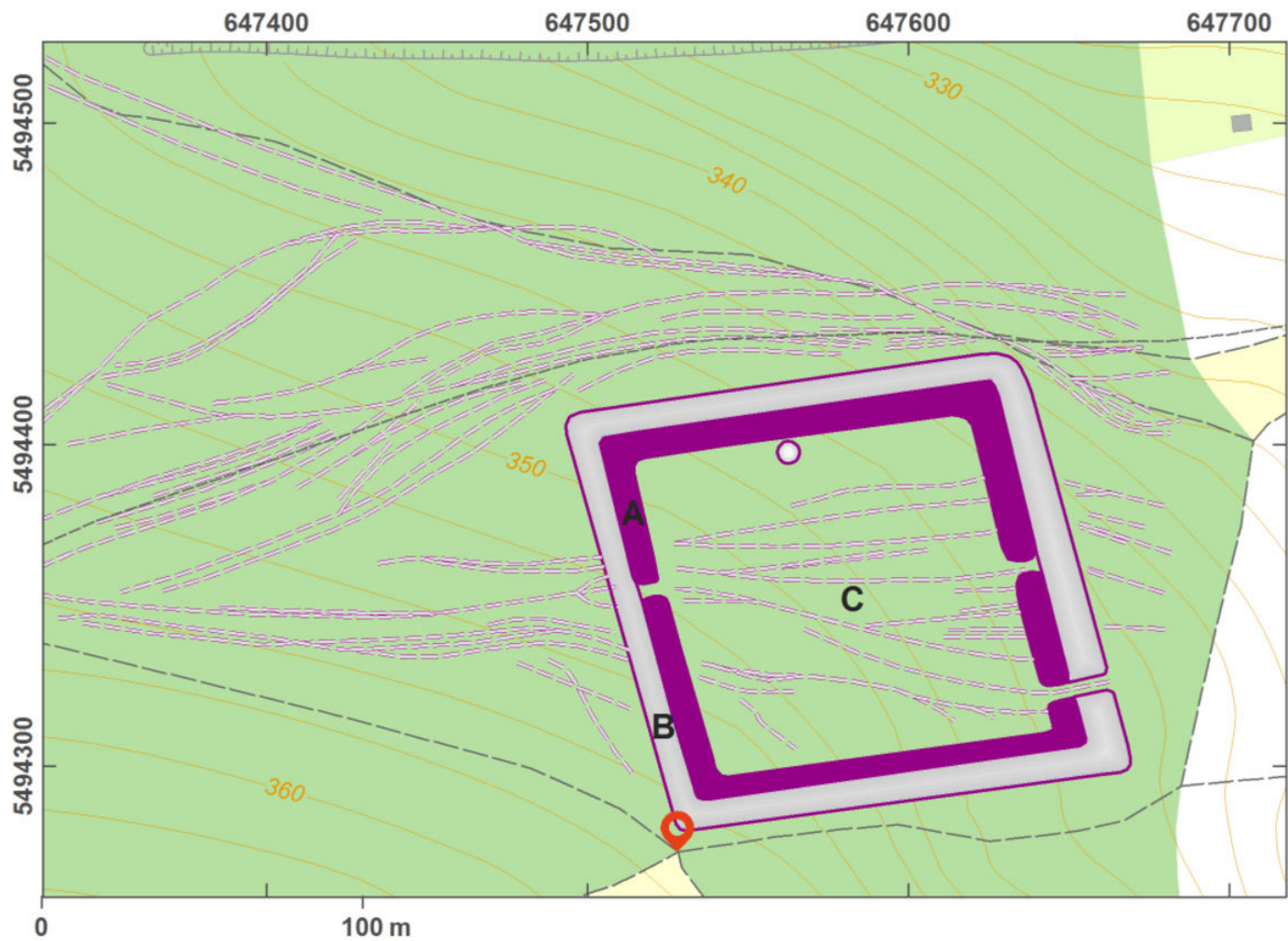
Navigation point: N 49°34'58.95", E 17°02'27.52".

Map notes: A – earthwork; B – ditch; C – medieval hollow ways.



Access map/site plan.

After Tomášek et al. 2015.



Site plan.

After Tomášek et al. 2015.



Earthwork and V-shaped ditch on the north part of the sconce; view from the east.

Photo P. Šlázar.



Remains of hollow ways in the south-eastern part of the inner area of the sconces, seen from the south-east.

Photo P. Šlázar.