

# Nový Jimramov, Žďár nad Sázavou dist., Vysočina Region

## Medieval castle Skály

(from the 2nd half of the 14th cent. to the 1st half of the 15th cent.)



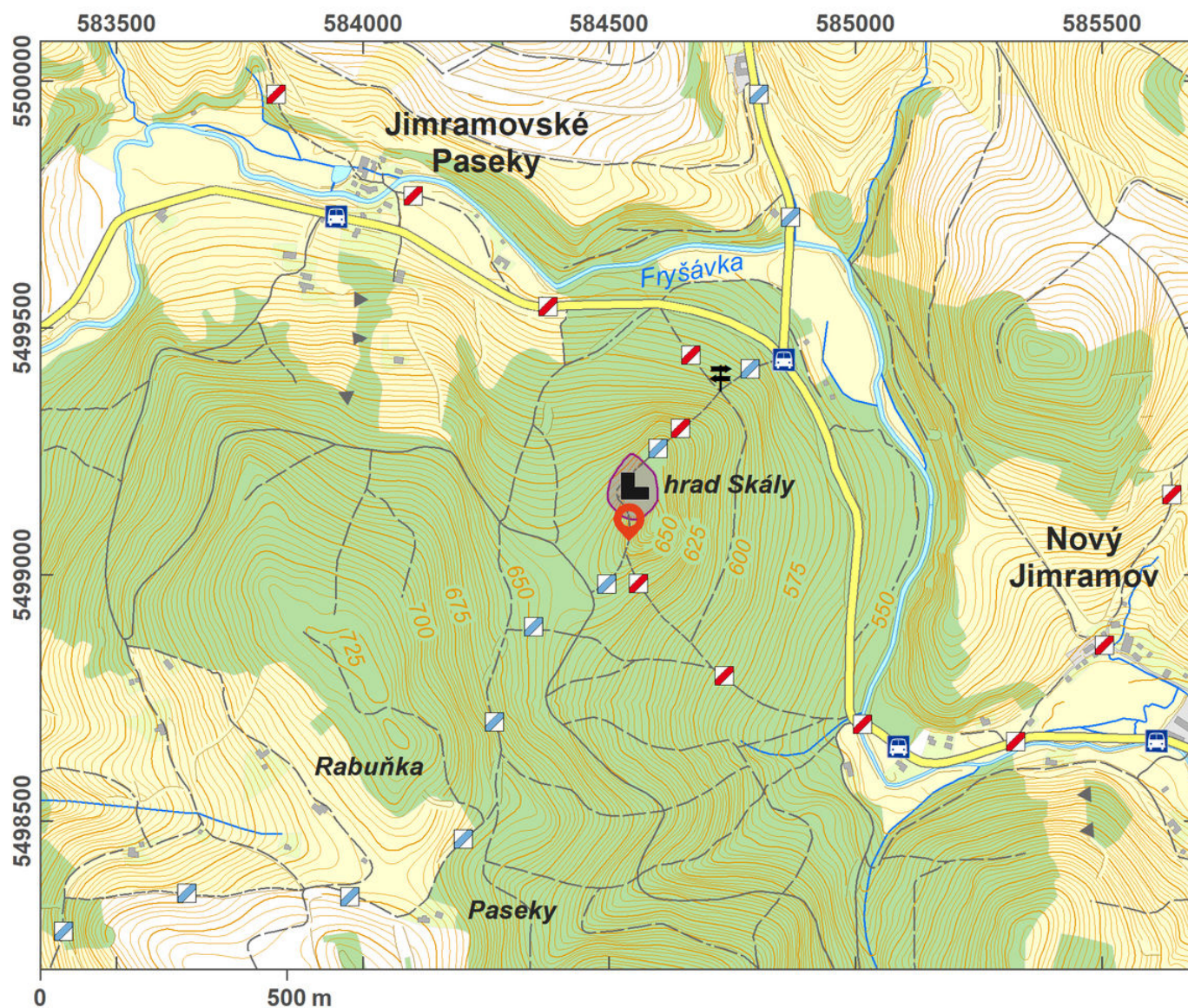
The remains of the medieval castle of Skály, making sophisticated use of erosion cracks, consist of tower-like blocks. The castle was erected in the 2nd half of the 14th and conquered by force in 1440, which is witnessed by numerous finds of cannonballs. Around 2000, an archaeological excavation was conducted. The appearance of the castle, influenced by the use of the rocks, is unique on our territory. The curtain walls between the rocks opened through gateways to the castle. The upper part consists of three stone buildings: a two-storey residential building, a one-storey building and another small building. In the area below the palace was a cistern carved into the rock. The building constructions are conserved and on display; the site is open to the public.

**References:** Plaček 1996, 2001; Belcredi 2006b, 2012, 2015.

**Navigation point:** N 49°38'19.20", E 16°10'15.16".

**Map notes:** 1 – upper ward; 2 – second lower ward; 3 – first lower ward; A – prismatic tower; B – oval bergfried; C – wall; D – small gate; E – a feature called 'vlčí jáma' (wolf pit); F – area of a bastion buildt of timber and earth.

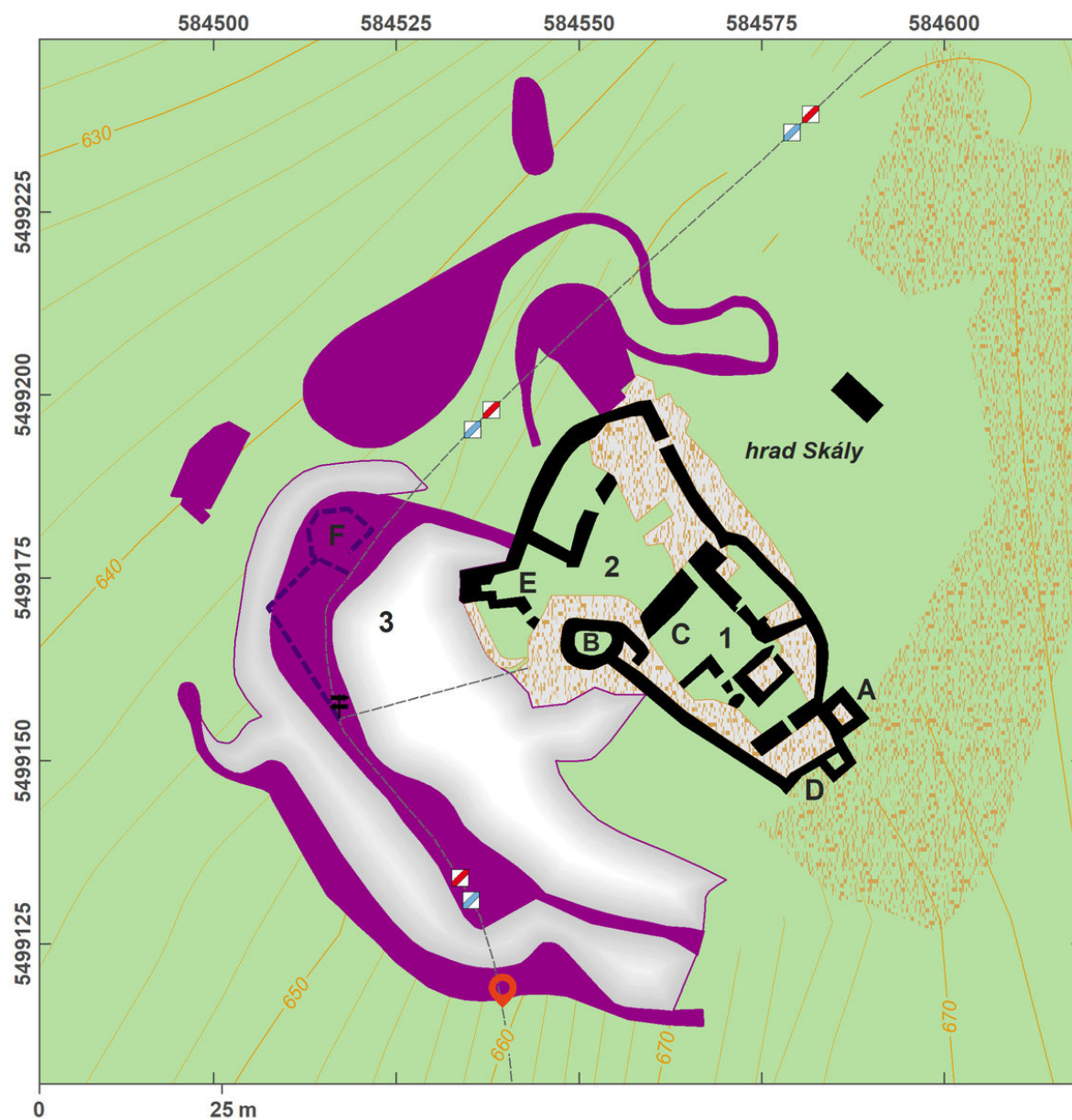




Access map.

After Tomášek et al. 2015.





Site plan.

After Tomášek et al. 2015.



Small gate on the outer side of a rocky gorge.

Photo A. Knechtová, 2014.



Archaeological field trip to Skály castle.

Photo A. Knechtová, 2014.



Reconstruction of the appearance of Skály castle in 1380–1440.

After M. Plaček and P. Šimeček, Archieve NPÚ UOP Prague.