

Obora u Tachova, Tachov dist., Plzeň Region

Medieval route

(12th–16th cent.)

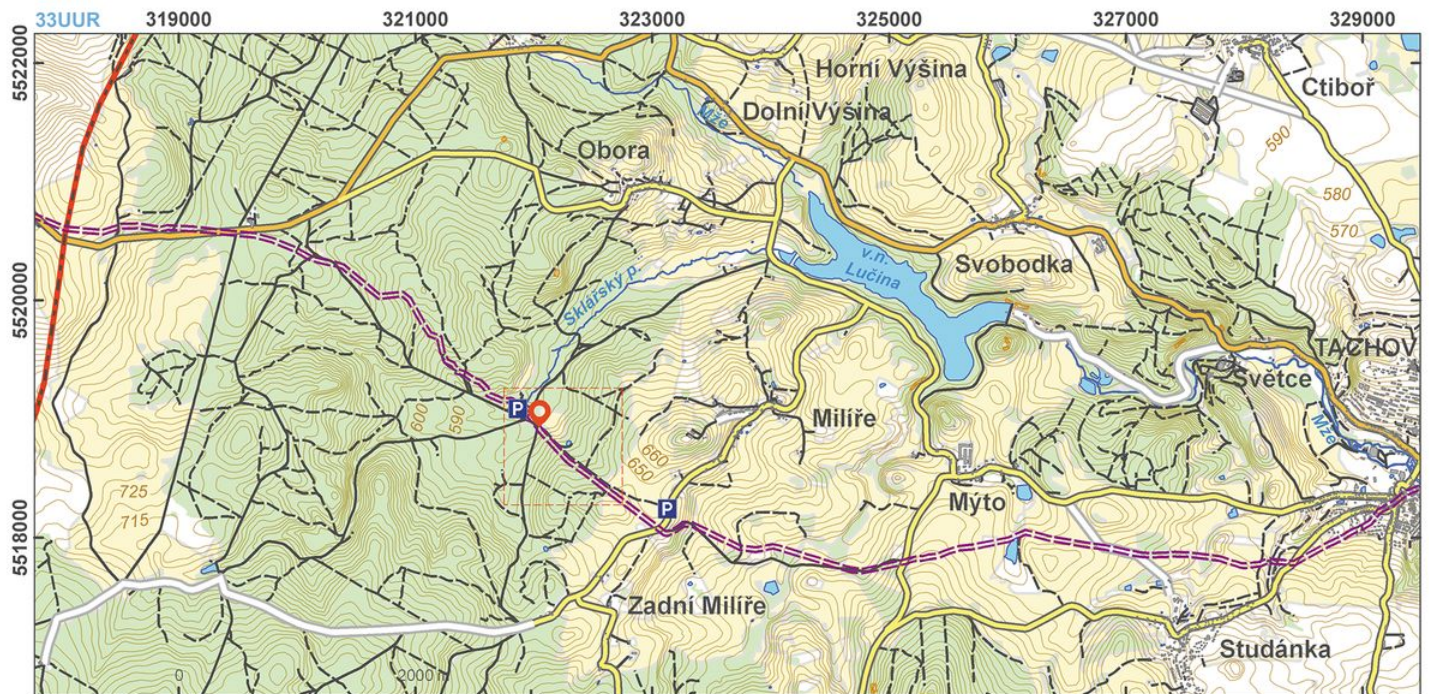


Preserved section of the so-called 'Gold Trail' that connected Bohemia to south Germany between the 12th and 16th centuries. Also known as the 'Nuremburg Trail', the route enjoyed its heyday during the reign of the Emperor Charles IV of Luxembourg, and later in 15th century played an important role in battles between the crusaders and Hussite forces. The best preserved section of the trail featuring the remains of hollow ways, pond banks, fords and conciliation crosses runs between the present-day towns of Tachov and Bärnau. The most distinct concentration of hollow ways can be seen between the villages of Zadní Miliře and former gamekeeper's lodge of Obora.

References: Minátová 1979; Šíroký – Nováček 1998; Soukup 2008.

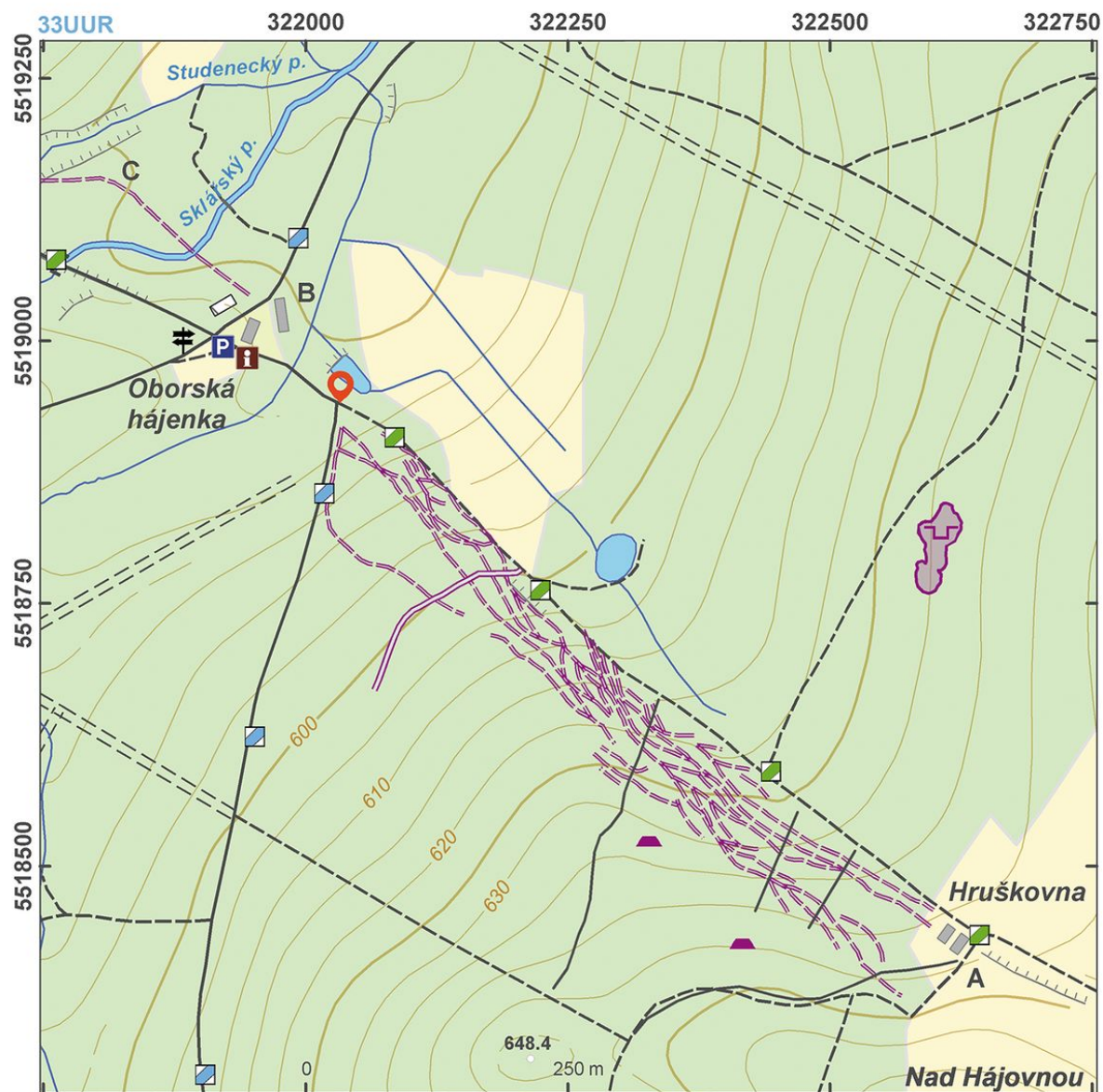
Navigation points: N 49°47'47.49", E 12°31'37.22".

Map notes: A – solitary homestead 'Hruškovna'; B – 'Obora' gamekeeper's lodge; C – part of the trail between the streams with rocky bottom paving.



Access map.

After Kuna et al. 2014.



Site plan.

After Kuna et al. 2014.



A hollow way between fords across Studenecký and Sklářský Streams.

Photo Z. Kačerová, 2013.



Cross-section of the hollow way.

Photo Z. Kačerová, 2013.



Hollow ways above the gamekeeper's lodge in Obora.

Photo Z. Kačerová, 2013.



Hollow way.

Photo Z. Kačerová, 2013.