

Obřany, Brno-City distr., Southern Moravia Region

Prehistoric hillfort Hradisko

(1250–400 BC)

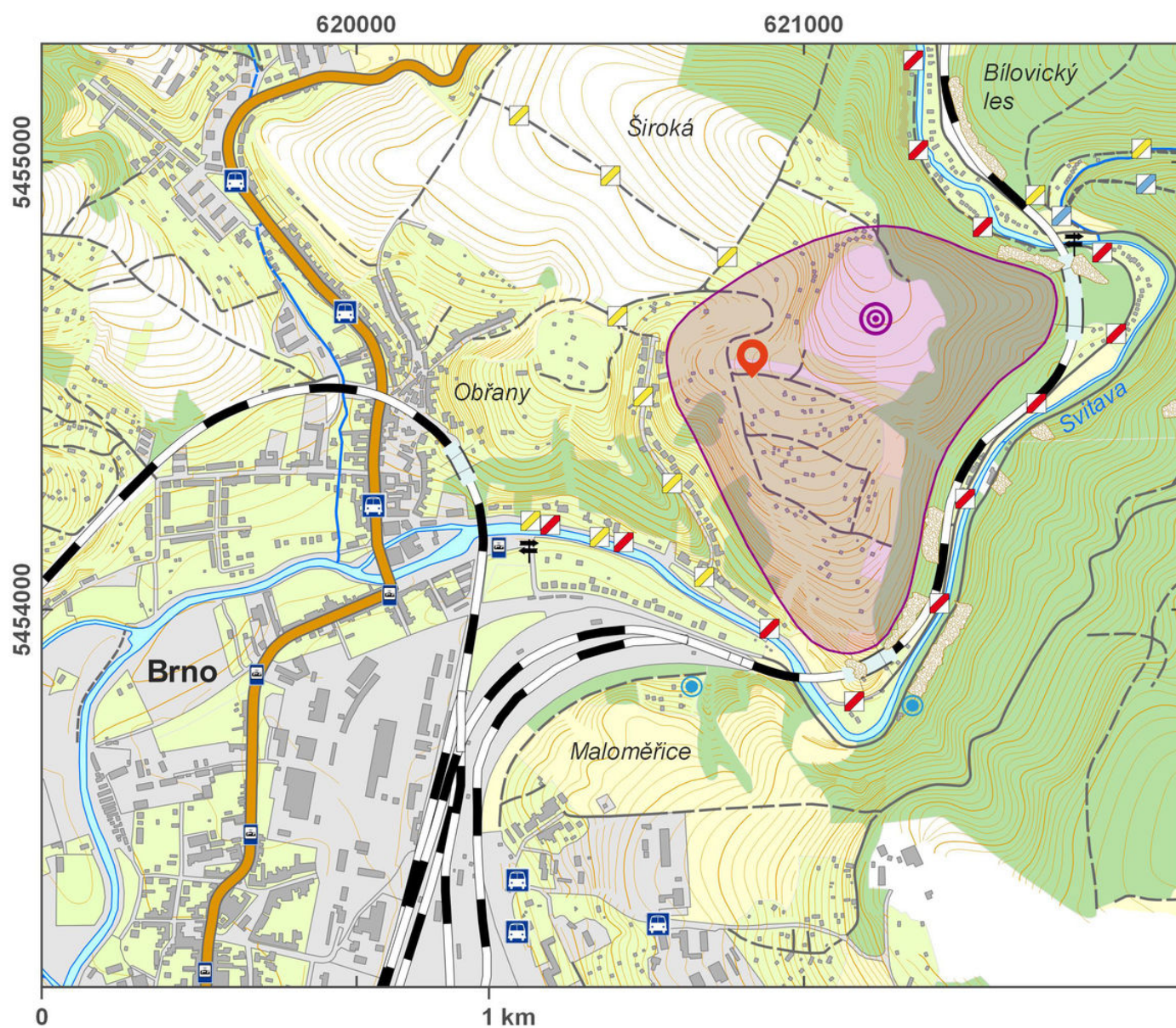


The prehistoric Hradisko hillfort was an important power centre of the region in the Final Bronze Age and an important iron working centre in the La Tène Period. The site was discovered in the 2nd half of the 19th century; archaeological excavations were conducted until the 1950s and yielded evidence of the use of the site by various prehistoric cultures. However, the site was fortified only in the Final Bronze Age. It spreads over a large triangular spur on a surface of about 20 ha. The mighty earthwork is best preserved on the north and east side with heights up to 5 m. The east side shows another outer earthwork 3 m in height, delimiting the lower ward. Remains of the fortification west and east of the site are currently not visible; the ground plan is apparent only in the wooded north-eastern part, with preserved elements of the fortification.

References: Sklenář – Sklenářová – Slabina 2002; Čížmář 2004; Čížmářová 2004.

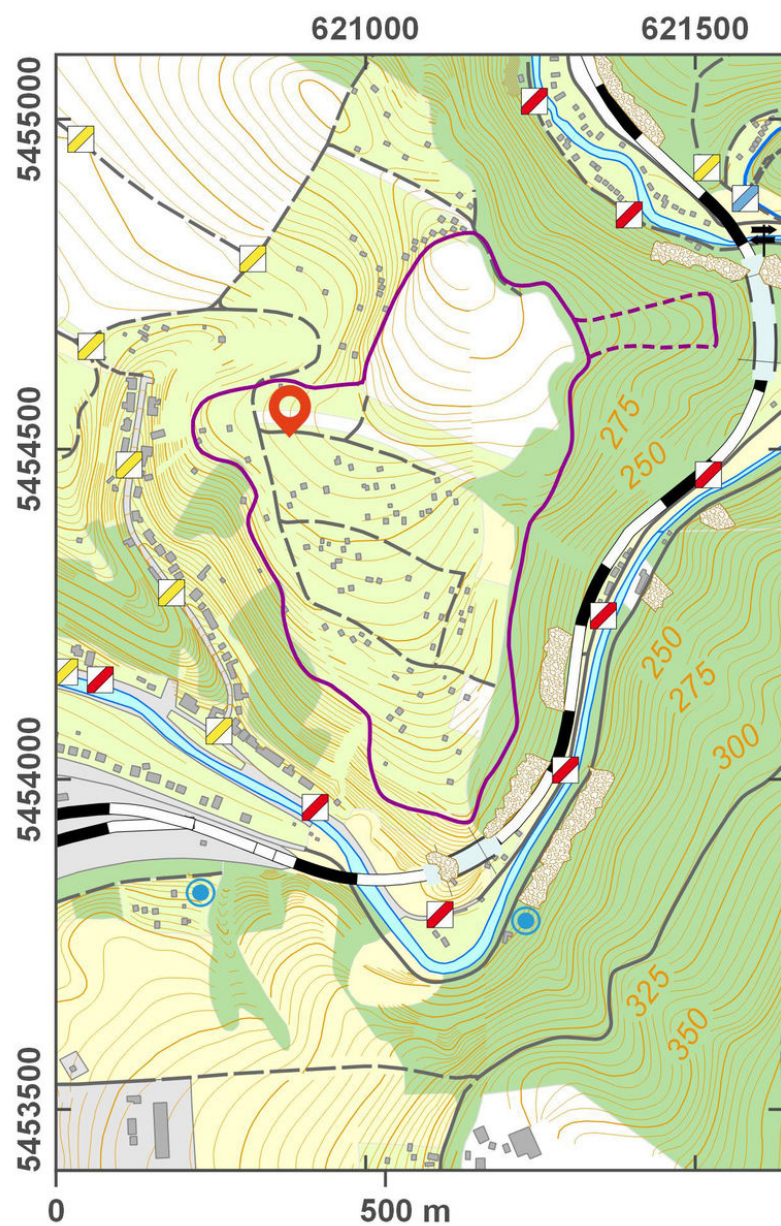
Navigation point: N 49°13'58.11", E 16°39'48.49".

https://archatlas-32445064-production.k8s.sinfin.io/en/lokace/obransy_mb_hradisko



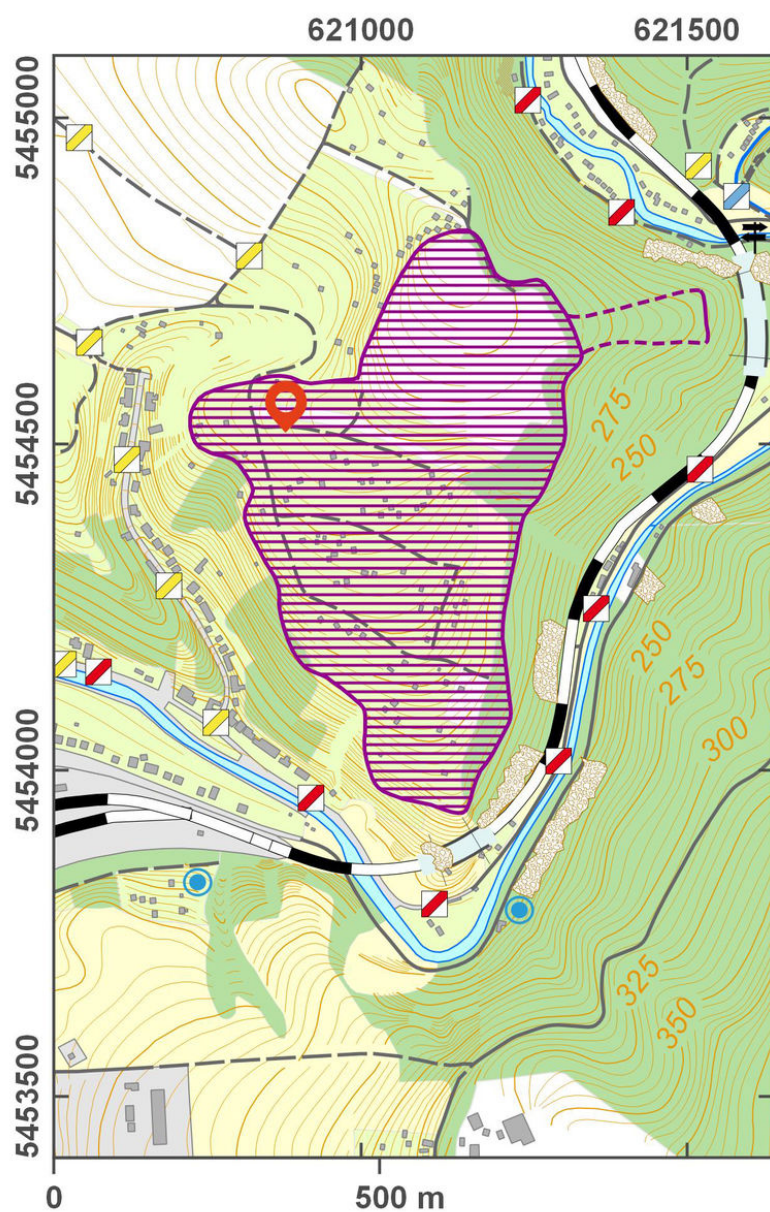
Access map.

After Tomášek et al. 2015.



Site plan.

After Tomášek et al. 2015.



Site plan.

After Tomášek et al. 2015.



Aerial view of the site from the south-west.

Photo M. Bálek, 1999.



Graphic reconstruction of the hillfort, view from the west.

After L. Balák.