

# Oparno, Litoměřice dist., Ústí nad Labem Region

## Prehistoric and medieval stone quarry

(150–50 BC, Early Middle Ages)



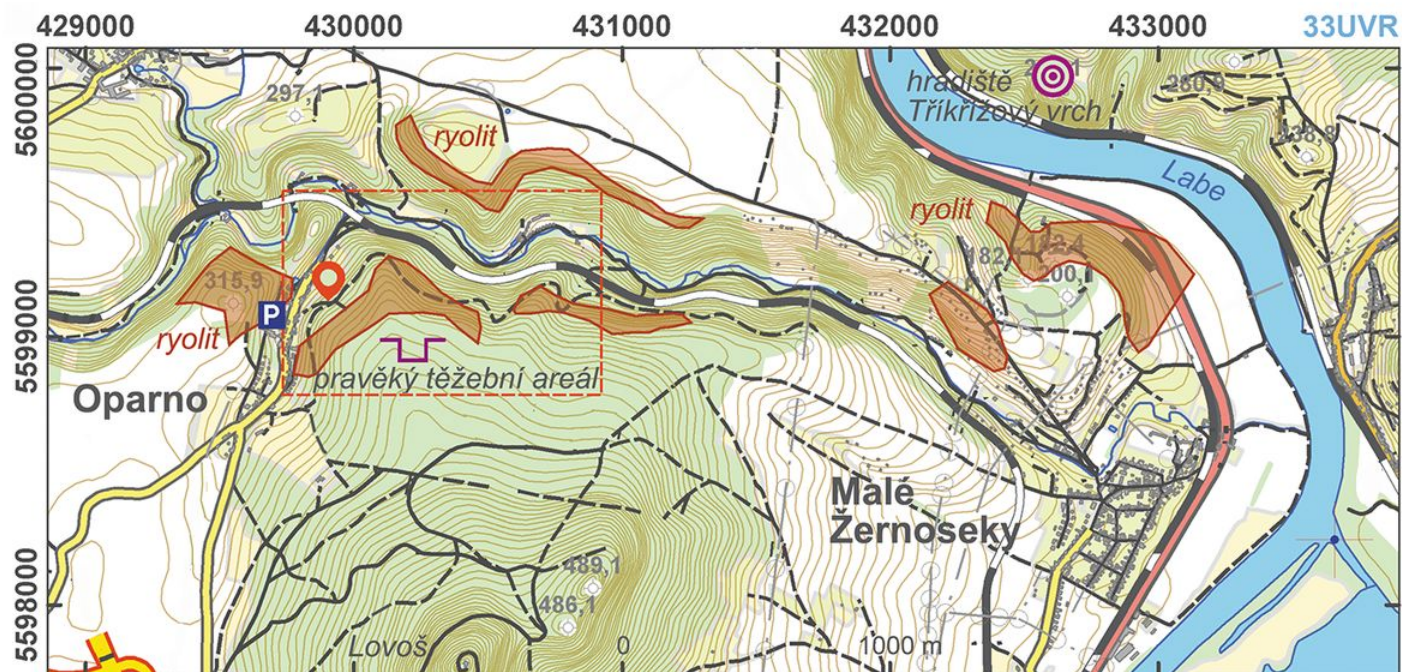
La Tène and Early Medieval stone quarries providing stone raw material for the production of rotary mills. Composed of two stones used to grind cereals, rotary mills (quern-stones) represented a major technological innovation in the La Tène Period. Moreover, their production and distribution required relatively complicated social organisation, as is indicated by the fact that the mills were in some cases found more than 100 km from the source. Based on the size of pits and discovered semi-finished products, the eastern part of the quarry was used in the La Tène Period, and the western part in the Early Middle Ages.

**References:** Zápotocký 1969; Waldhauser 1981, 2012b.

**Navigation points:** N 50°32'23.71", E 14°00'40.17".

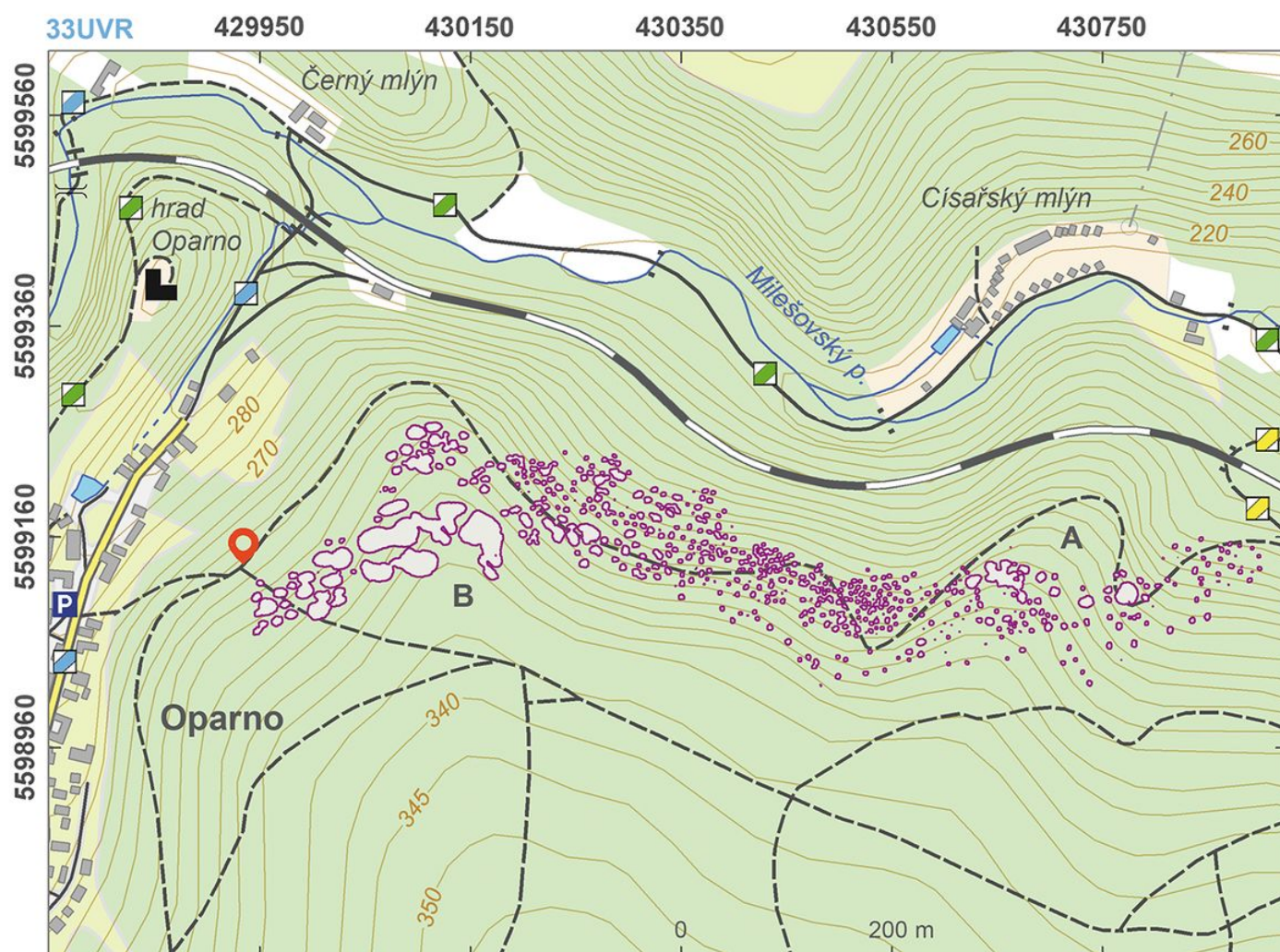
**Map notes:** A – eastern part of La Tène quarry; B – western part of quarry used in the Early Middle Ages.





Access map.

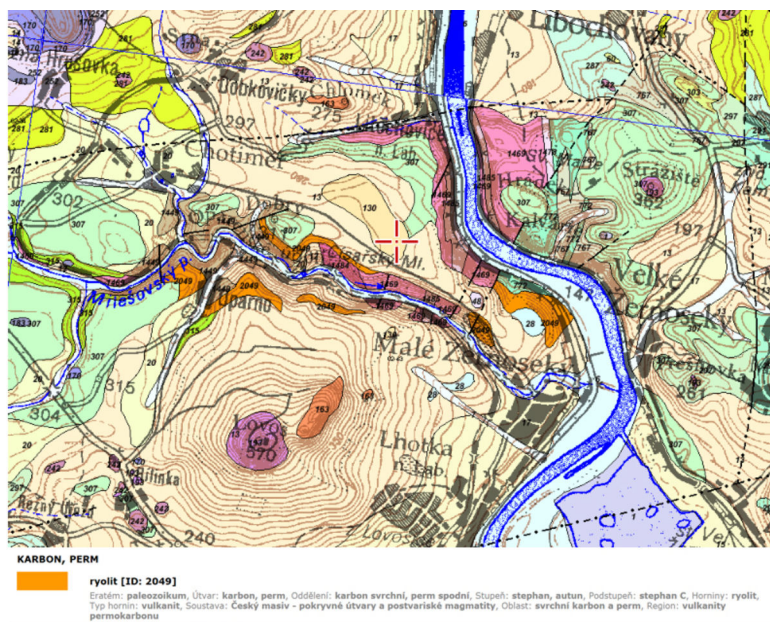
After Kuna et al. 2014.



Site plan.

After Kuna et al. 2014.





Rhyolite outcrops near Oparno.

After [www.geologicke-mapy.cz](http://www.geologicke-mapy.cz).



Oparno, House Nr. 22. Behind it a path to the mining area is turning off.

Photo M. Kuna, 2014.





Semifinished quernstone from vicinity of the mining pits.

Photo M. Kuna, 2014.



Semifinished Prehistorical quernstone.

Photo M. Kuna, 2014.



Semifinished quernstone.

Photo M. Kuna, 2014.