

# Počaply u Březnice, Příbram dist., Central Bohemian Region

## Early Medieval hillfort

(10th–11th cent.)



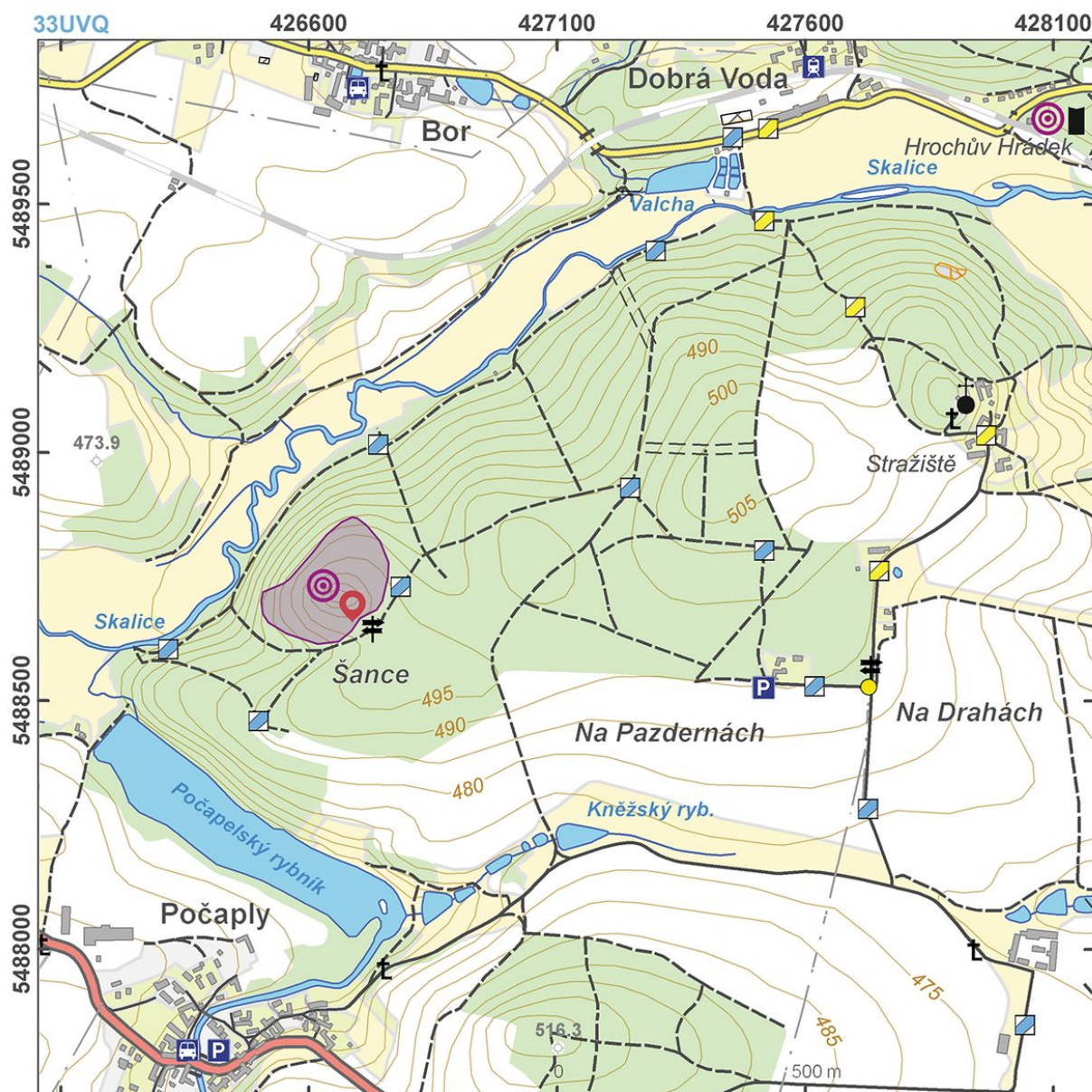
The Early Medieval 'Šance' hillfort with a spectacular fortification was founded in the first half of the 10th century as one of the Přemyslids' footholds for their expansion into south Bohemia. It consists of an acropolis enclosed by a massive inner rampart (still reaching a height of 6 m), an annexe (bailey) on the eastern side and possibly another annexe on the other side. The hillfort may have served the local elite for residential purposes, as a production centre, including iron industry, and a market point.

**References:** Píř 1909; Dubský 1947; Turek 1965; Lutovský 1999; Lutovský – Stolz 2001.

**Navigation points:** N 49°32'46.02", E 13°59'12.37" (southeast).

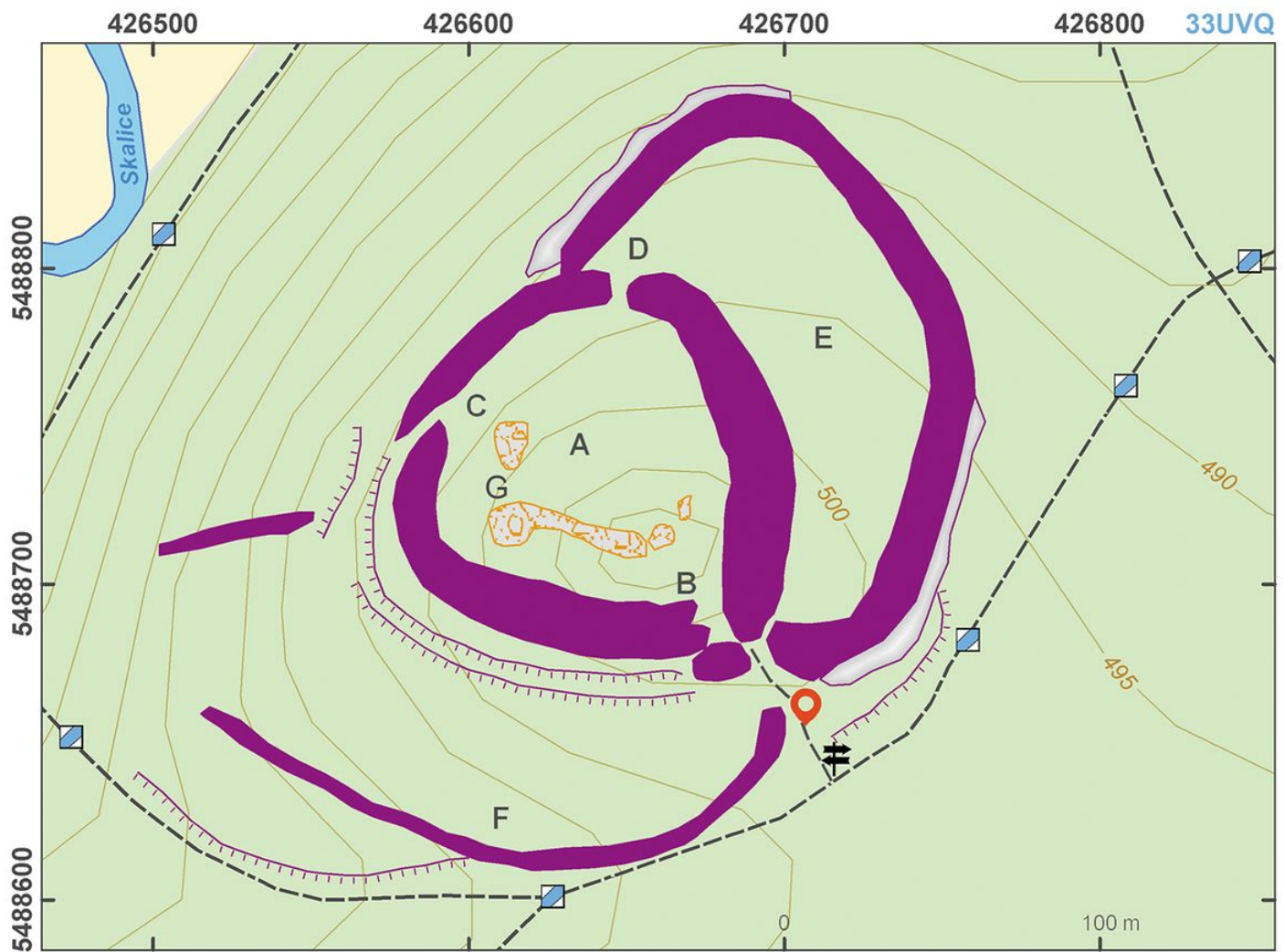
**Map notes:** A – acropolis; B – possible location of a gate; C – original gate with parallel wings; D – a passage between the acropolis and annexe; E – annexe (bailey); F – low bank of a possible second annexe (bailey); G – a passage.





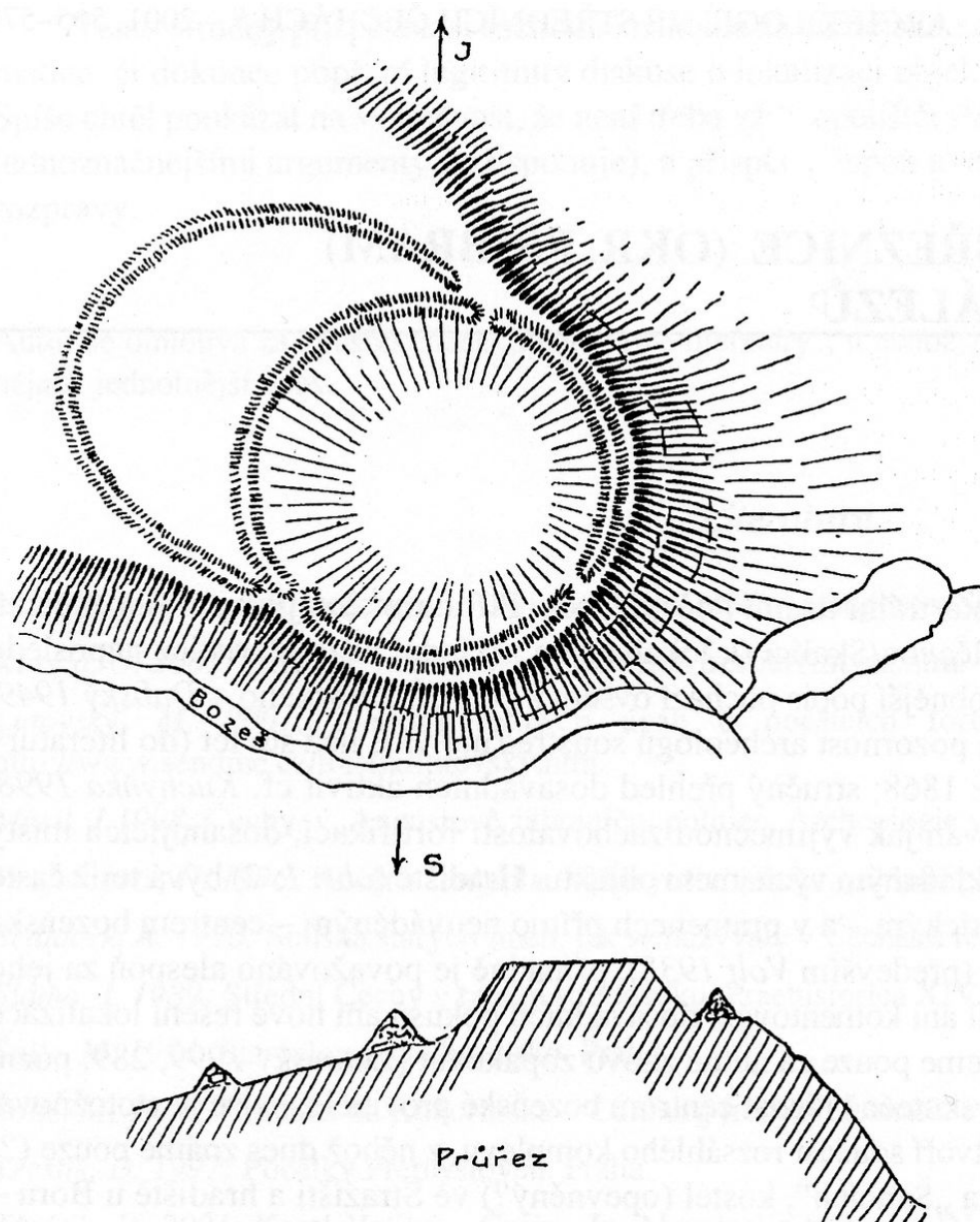
Access map.

After Kuna et al. 2014.



Site plan.

After Kuna et al. 2014.



Plan of the hillfort.

After Píč 1909.





Inner bank from east.

Photo D. Dreslerová.



Artificially adjusted passage through rock block in eastern part of the hillfort.

Photo D. Dreslerová.



Rock block at the acropolis' top.

Photo D. Dreslerová.