

# Podobora and Louky nad Olší, Karviná District, Moravian-Silesian Region

## Chotěbuz-Podobora stronghold

(900 BC–11th cent. AD)

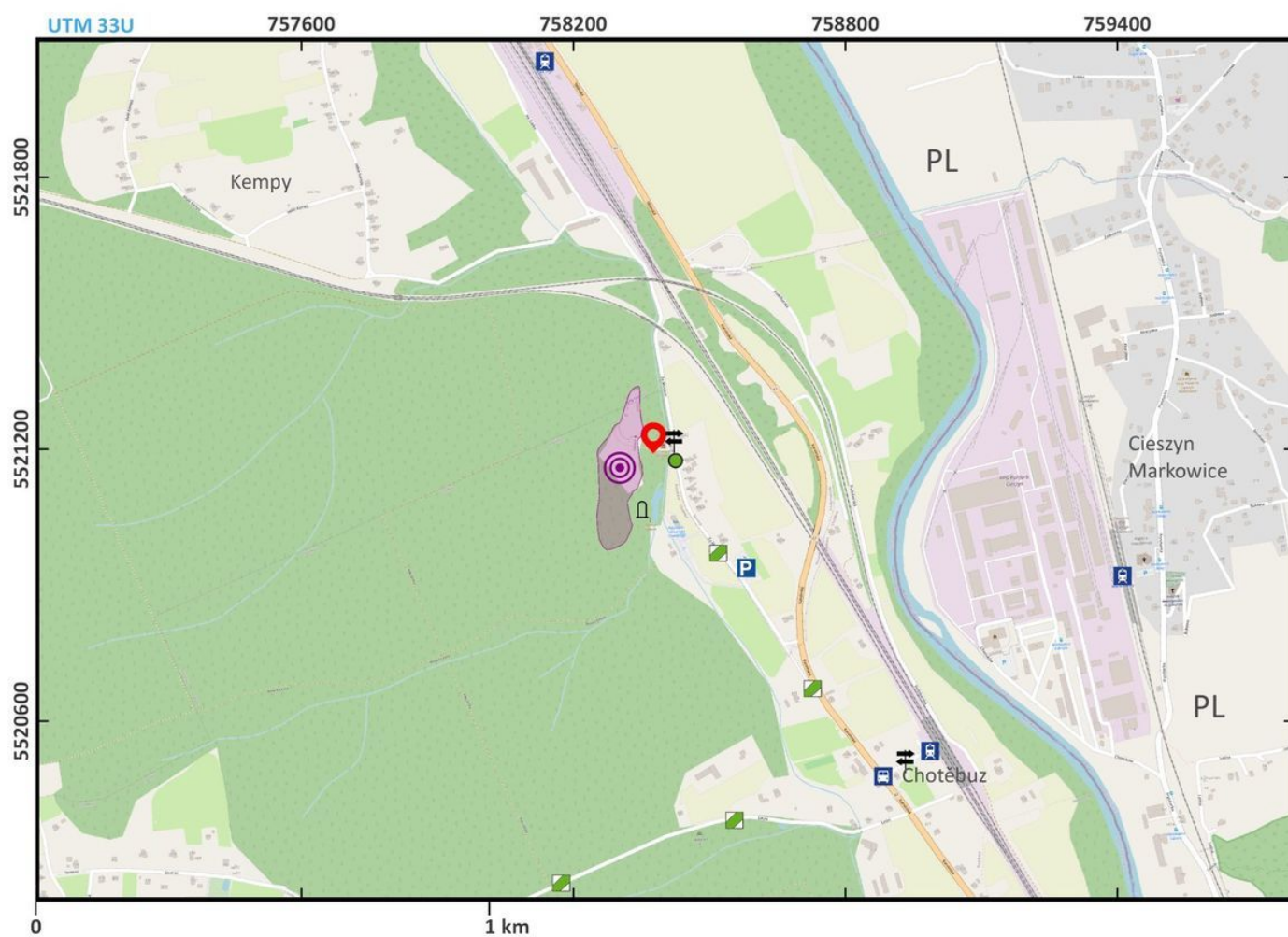


The Chotěbuz-Podobora stronghold is situated about 2 km north-east of the centre of the town of Chotěbuz, on an elevated promontory above the Olza River close to what was an important trade route. Archaeological finds from the site were first mentioned in the 19th century but no archaeological fieldwork was conducted until the 1950s. The systematic excavation started in 1978 and is still ongoing. It is a multi-cultural site settled from the Final Bronze Age (Silesian phase of the Lusatian Urnfield culture) to the Hallstatt period (Platěnice culture) and then again in the Early Middle Ages when it reached its maximum extent. The Slavic settlement can be dated from the mid-8th to the beginning of the 11th century AD. The area consists of two outer baileys and an acropolis. The fortified complex is about 1.7 ha large and about 400 metres wide. Among the finds, the dwellings and production facilities with a number of artefacts deserve particular mention. The site is occupied today by a vast archaeological park.

**References:** Čížmář 2004; Kouřil – Gryc 2014; 2019.

**Navigation point:** N 49°47'15", E 18°35'23.5" (entrance to the archaeological park).

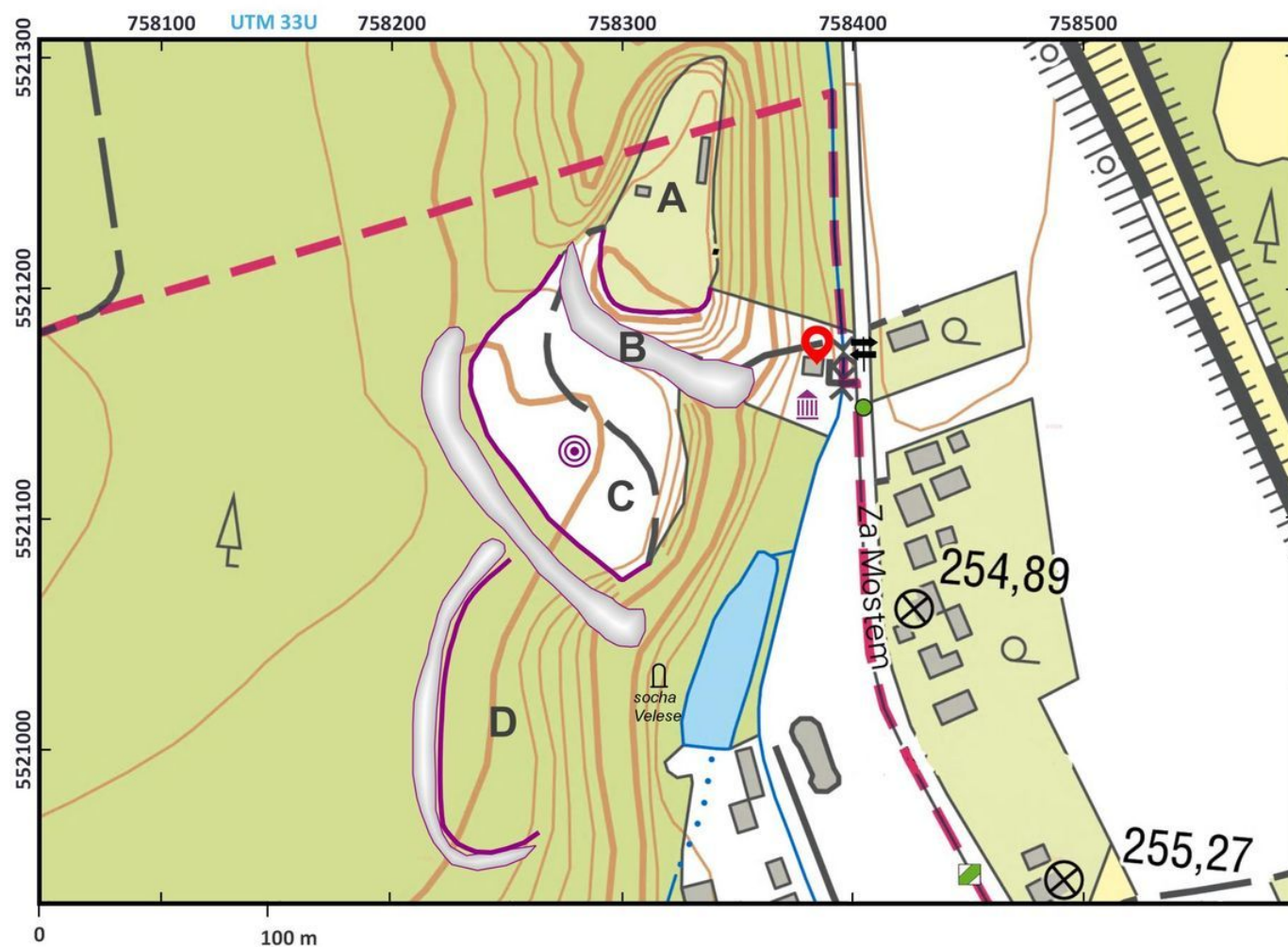
**Map notes:** A – acropolis; B – gate and bridge over the ditch; C – first outer bailey; D – second outer bailey.



Access map.

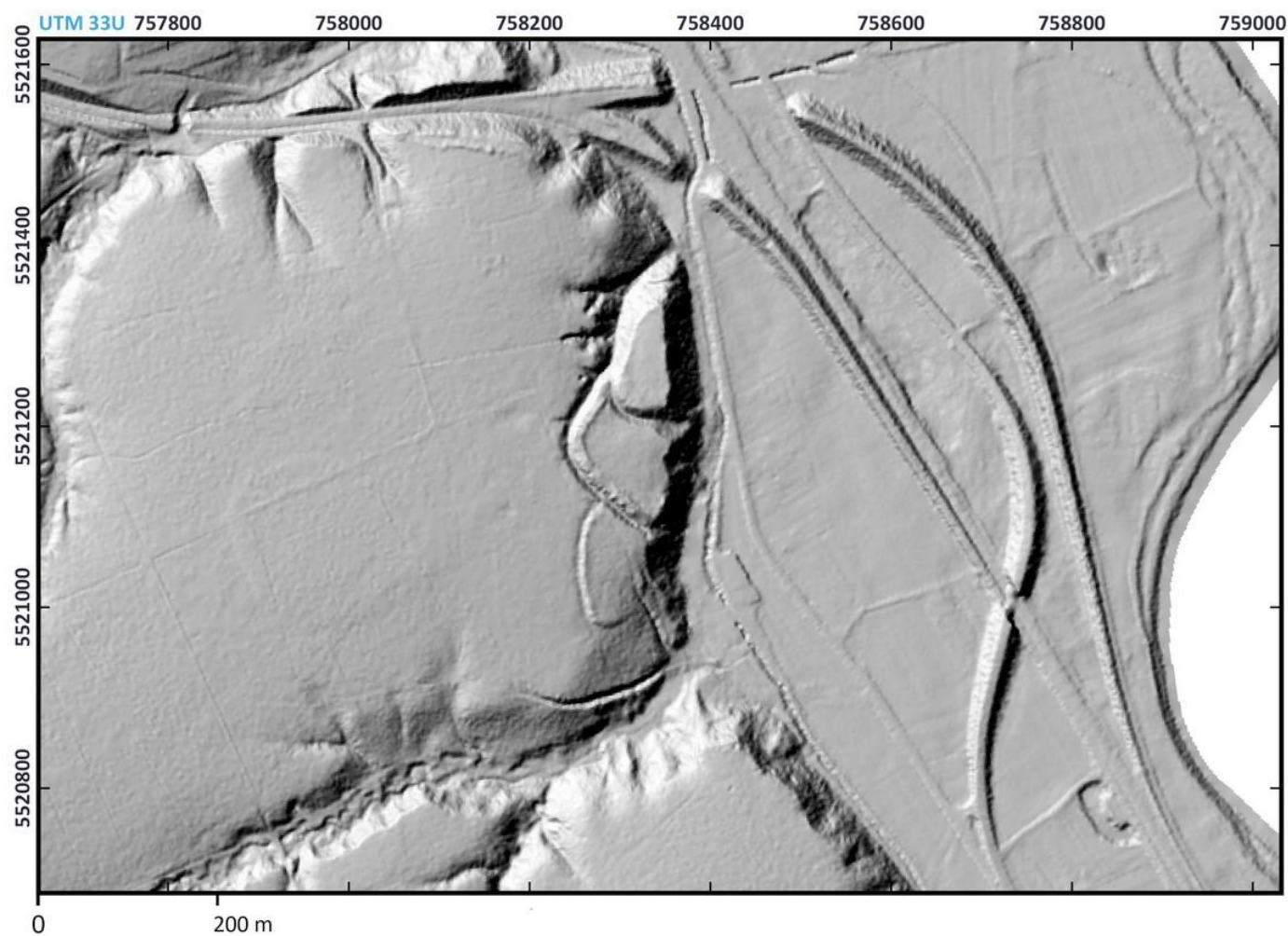
Edited by A. Gašpar, 2020.





Access map/site plan.

Edited by A. Gašpar, 2020.



Physical relief model of the site.

Edited by A. Gašpar, 2020.





Chotěbuz-Podobora. View of the acropolis from the first outer bailey with the modern archaeological Archive of the AIB, 2009.



View of the stronghold acropolis and the modern archaeological park.  
Museum of Těšín, photographic archive, 2013.



Stronghold acropolis and the first outer bailey.  
Museum of Těšín, photographic archive, 2007.



New entrance building to the archaeological park with exhibition and pottery workshop.  
Museum of Těšín, photographic archive, 2016.





Exhibition on archaeology and natural history in the entrance building to the archaeological park.  
Museum of Těšín, photographic archive, 2019.



Public event presenting the life of the Slavs.  
Museum of Těšín, photographic archive, 2013.