

# Radkov u Vítkova, (Opava dist., Moravian-Silesian Region)

## Medieval castle Vikštejn

(13th–17th cent.)



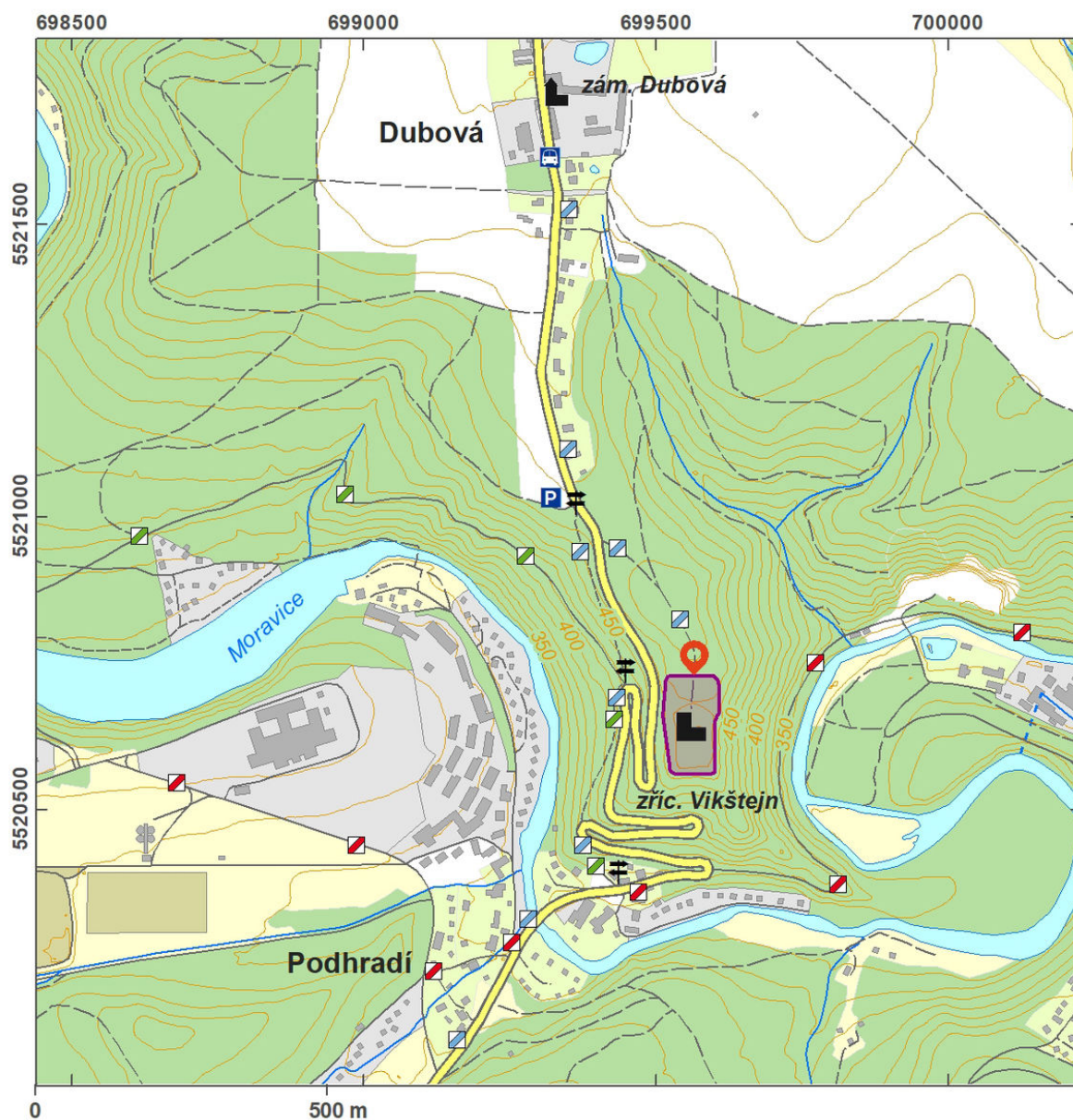
This vast ruin of a medieval castle is situated in the valley of the Moravice River in a unique natural reserve. The first written record of the castle stems from 1377; after the owners had changed for a number of times, it was deserted in the course of the 18th century, fell in disrepair, and in 1789, it was inhabited only by a single eremite. Originally, the castle consisted of an oval upper ward protected by a curtain wall. The south part of the upper ward contained residential apartments, from which only relics of the walls are preserved now. Among the other defensive structures are a zwinger wall, well preserved in the east, and a moat with a well carved into the rocks. Some of the remains stem from a Renaissance reconstruction. In 2011, the castle area was revitalized and panels informing about the history, building development and archaeological finds at the castle were installed.

**References:** Plaček 1996; Kouřil – Prix – Wihoda 2000.

**Navigation point:** N 49°48'20.87", E 17°46'25.11".

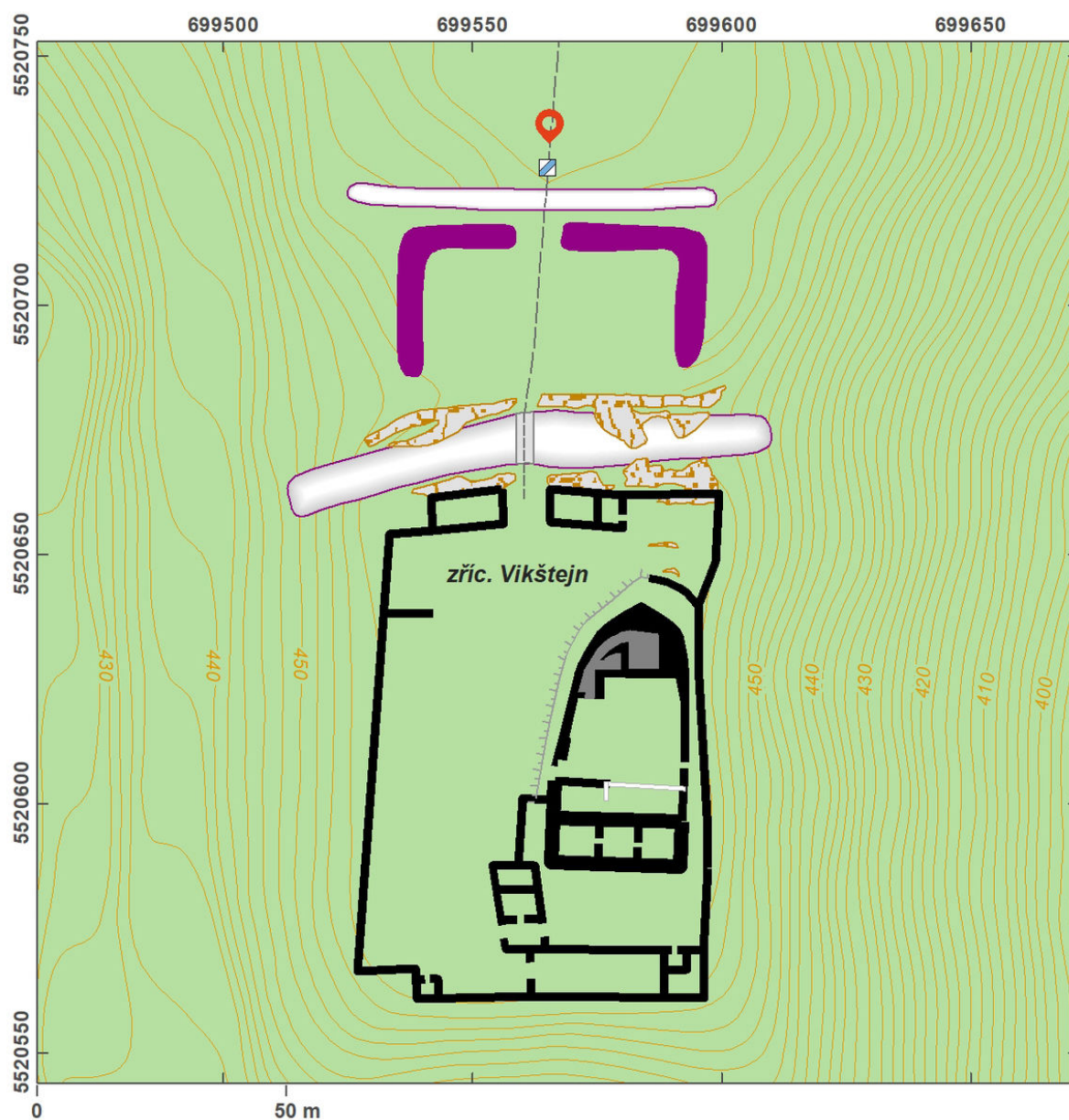
[https://archatlas-32445064-production.k8s.sinfin.io/en/lokace/radkov\\_op\\_hrad\\_vikstejn](https://archatlas-32445064-production.k8s.sinfin.io/en/lokace/radkov_op_hrad_vikstejn)

**Map notes:** LLS picture: A – the relics of the town and fortification of Radkov; B – the network of hollow ways.



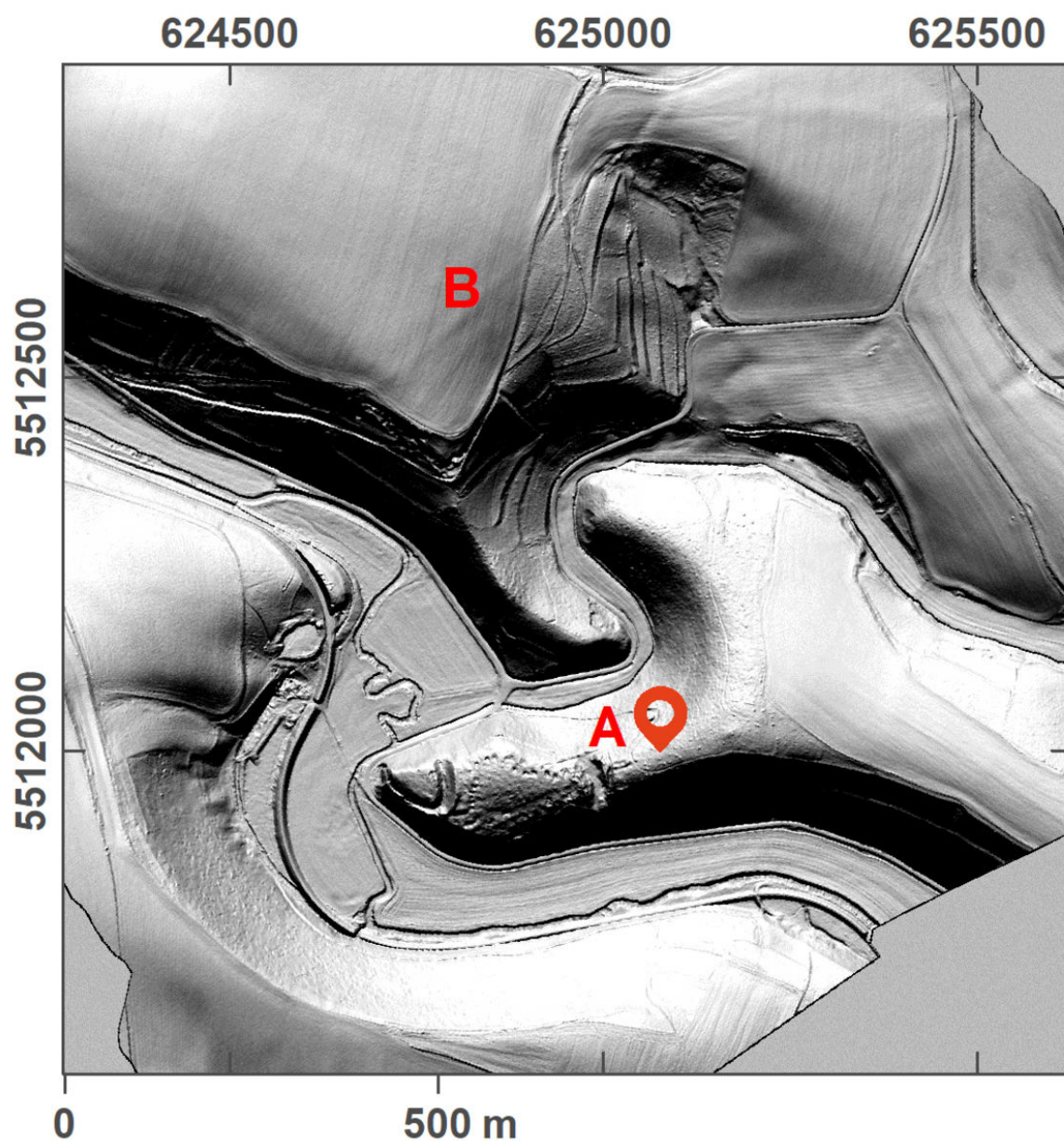
Access map.

After Tomášek et al. 2015.



Site plan.

After Tomášek et al. 2015.



LLS picture.

After Tomášek et al. 2015.



Medieval upper ward of the castle protected by a mantlet wall with bergfried and embrasures.

Photo M. Zezulová.



Stone ball (projectile) walled up in the west wall of a Renaissance service building.

Photo M. Zezulová.