

Řepeč, Tábor dist., South Bohemian Region

Medieval castle 'Přiběničky' with its suburb

(13th–15th cent.)

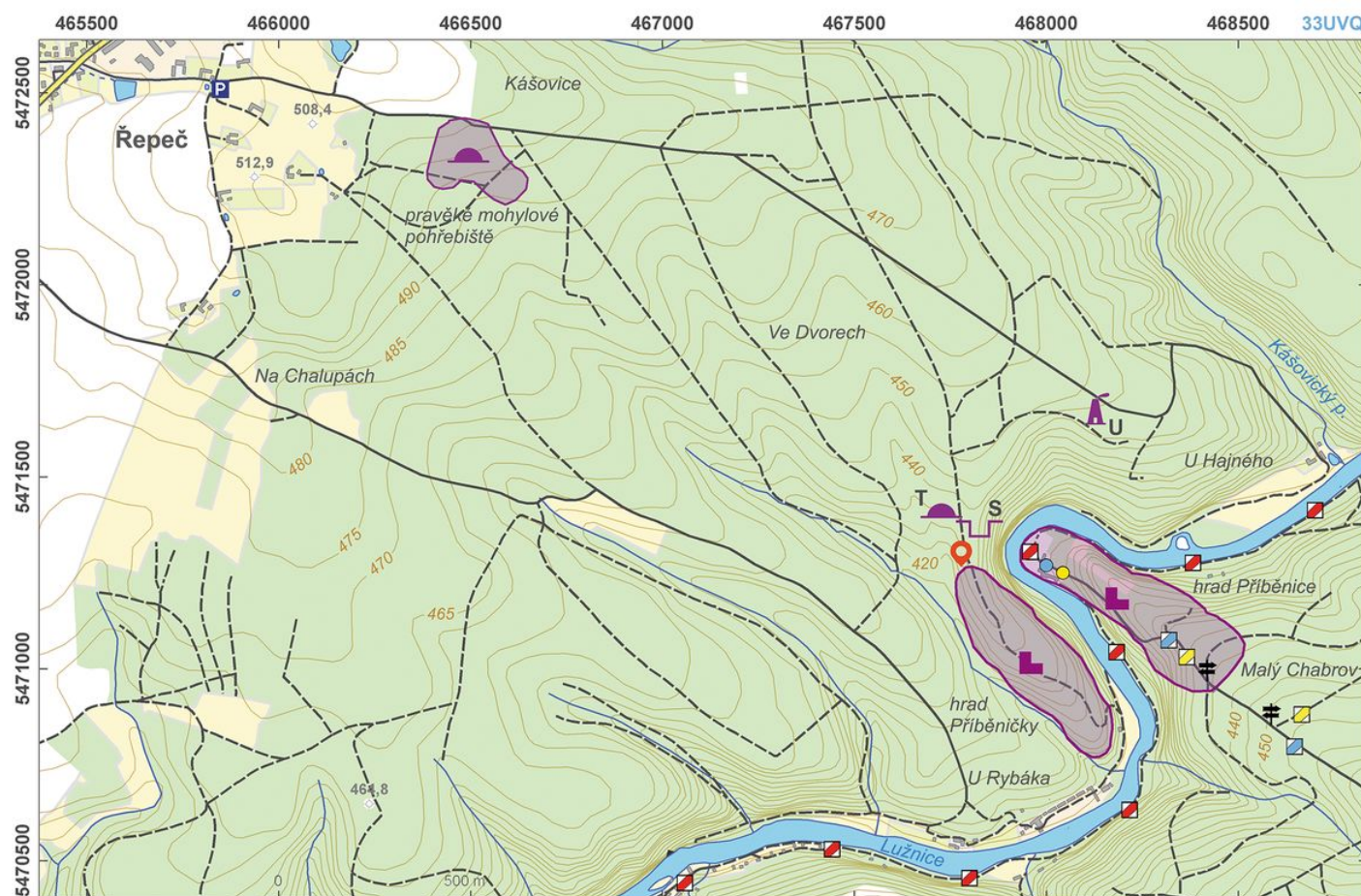


A settlement complex consisting of Late Medieval 'Přiběničky' Castle, its bailey and 'latrán' (a fortified outer settlement attached to the castle – suburb) connected by paths to 'Přiběnice' Castle on the opposite bank of the Lužnice River. The castle was built around the mid 13th century, probably as a demonstration of royal power against the Vítek domain (the 'Přiběnice' Castle). Under Rosenberg (Rožmberk) ownership (in the 14th), both castles were spatially and economically interconnected, and a suburb was added to 'Přiběničky' (C). However, the suburb never fully developed, for the castle was besieged by the forces of the town Tábor in the Hussite period and demolished in 1437, never to be rebuilt.

References: Vařeka 1993; Sedláček 1996; Durdík 2009; Hložek 2010; Hložek – Menšík 2010a, 2010b; Hložek 2011, 2012.

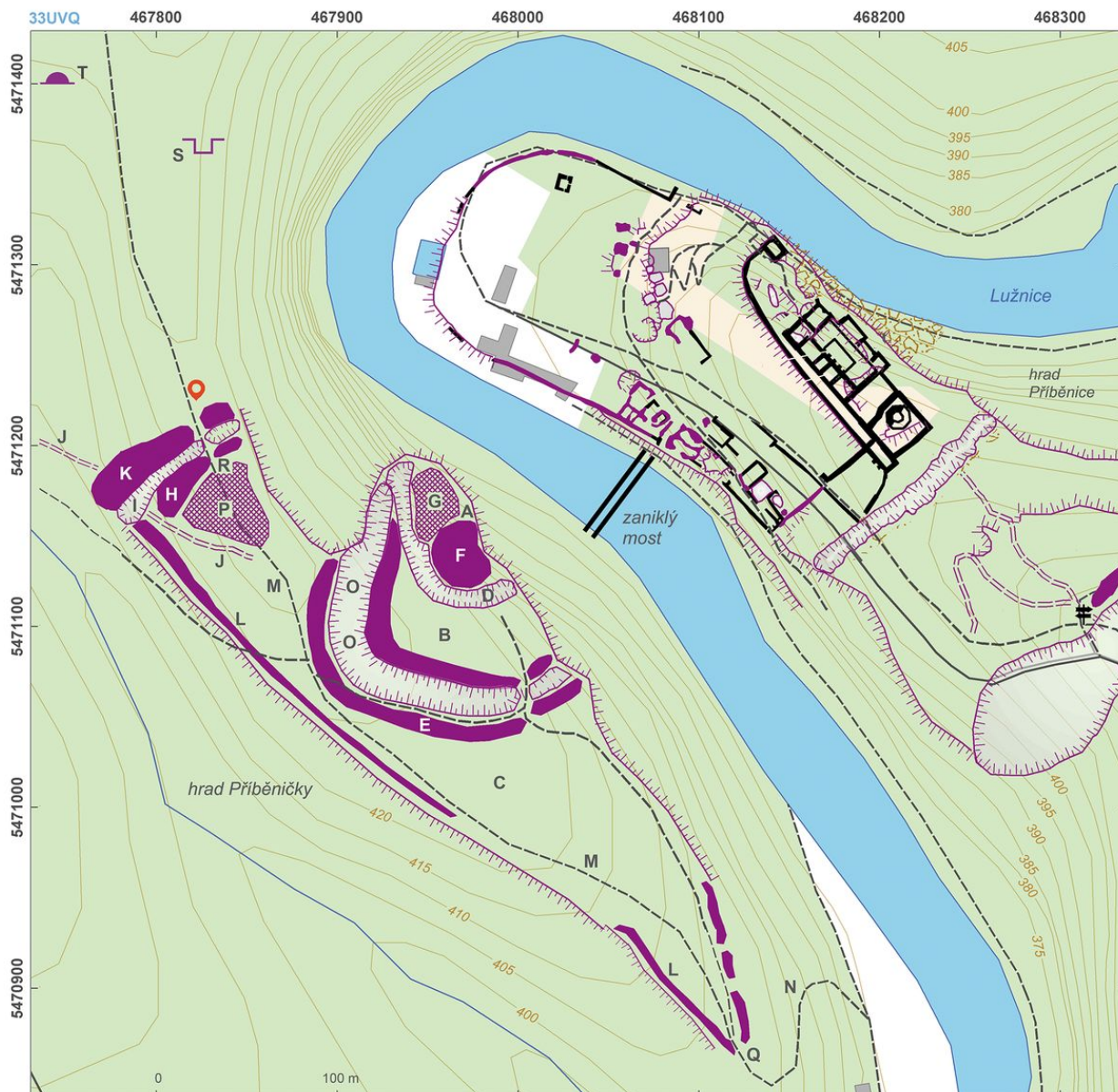
Navigation points: N 49°23'34.45", E 14°33'23.39" (northwest).

Map notes: A – castle; B – bailey; C – 'latrán' (suburb); D – ditch carved into rock; E – bank in front of rampart and ditch of the bailey; F – keep; G – remains of palace; H – bank, a remnant of the original fortification; I – frontal ditch; J – earlier hollow ways; K–L – banks; M – present-day road; N – hollow ways; O – memorials of the 19th century; P – remains of smaller structures previously thought to be St George's Chapel; Q–R – gates; S – quarry for building stone; T – Hallstatt barrow; U – Early Modern limekiln.



Access map.

After Kuna et al. 2014.



Site plan.

After Kuna et al. 2014.



Úvozová cesta vedoucí prostorem zaniklé jižní brány hradního komplexu.

Foto J. Hložek, 2006.

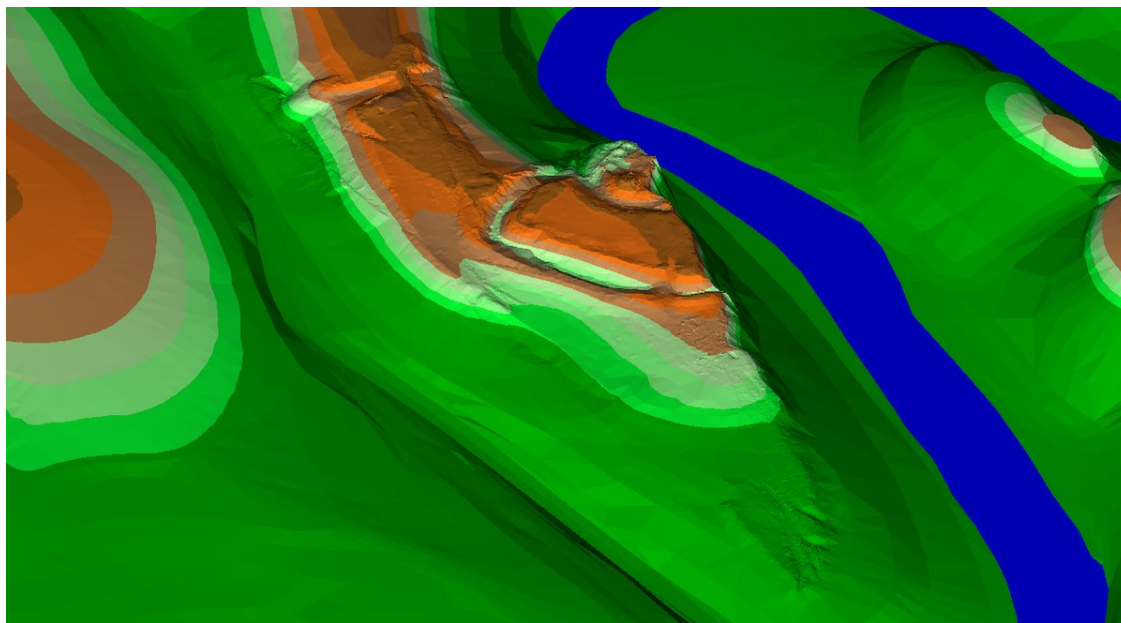


Remains of a bergfrit in secondary position. Outer face of the masonry.

Photo J. Hložek, 2006.



Romantic adjustments of the castle core. A memorial is preserved in northwestern curve of the foreground's moat.
Photo J. Hložek, 2006.



3D visualisation of the castle area.
After Hložek 2012.



3D visualisation of the castle area with surroundings.

After Hložek 2012.



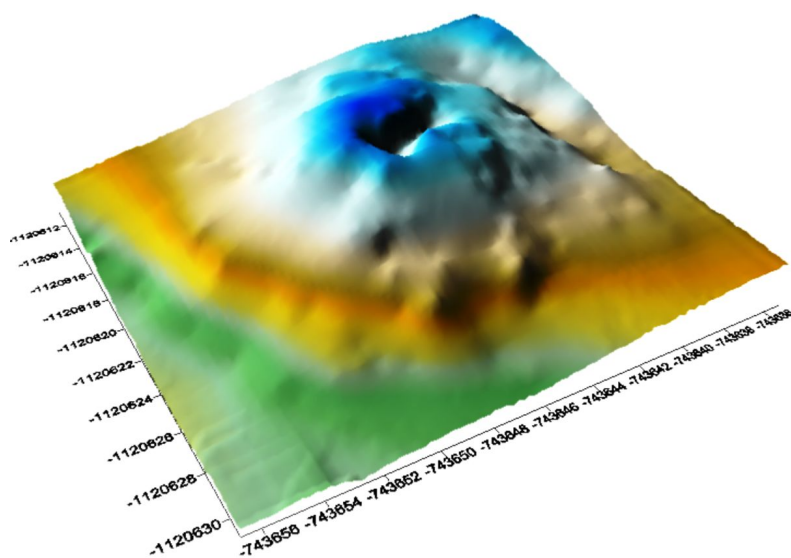
Deserted quarry in the castle's foreground.

Photo J. Hložek, 2009.



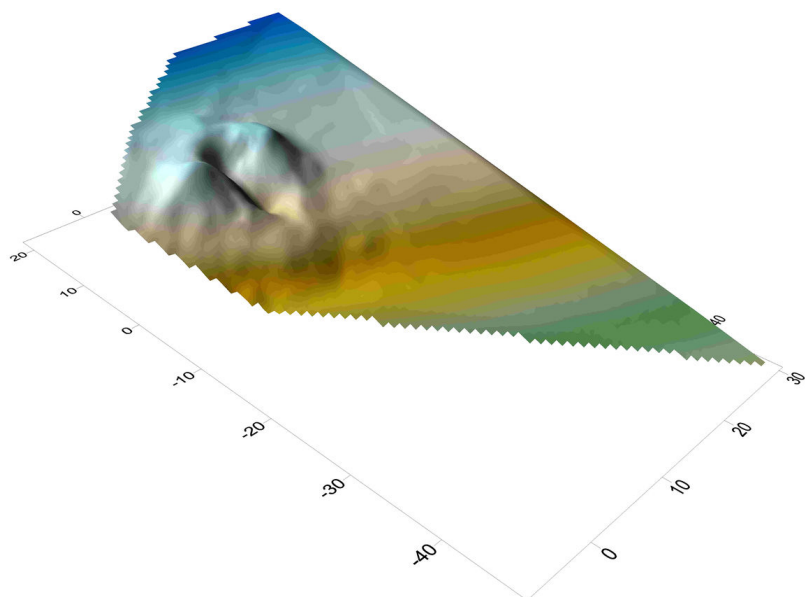
A barrow from Halstatt period (?) in the castle's foregrounds.

Photo J. Hložek, 2009.



A barrow in the castle's foregrounds in 3D visualisation.

After Hložek 2012.



Limestone kiln in broader foreground of the castle. 3D visualisation.

After Hložek 2012.