

# Sudice u Boskovic, Blansko District, South Moravian Region

Na Vejštici hillfort, a fortified hilltop site from the Jevišovice culture

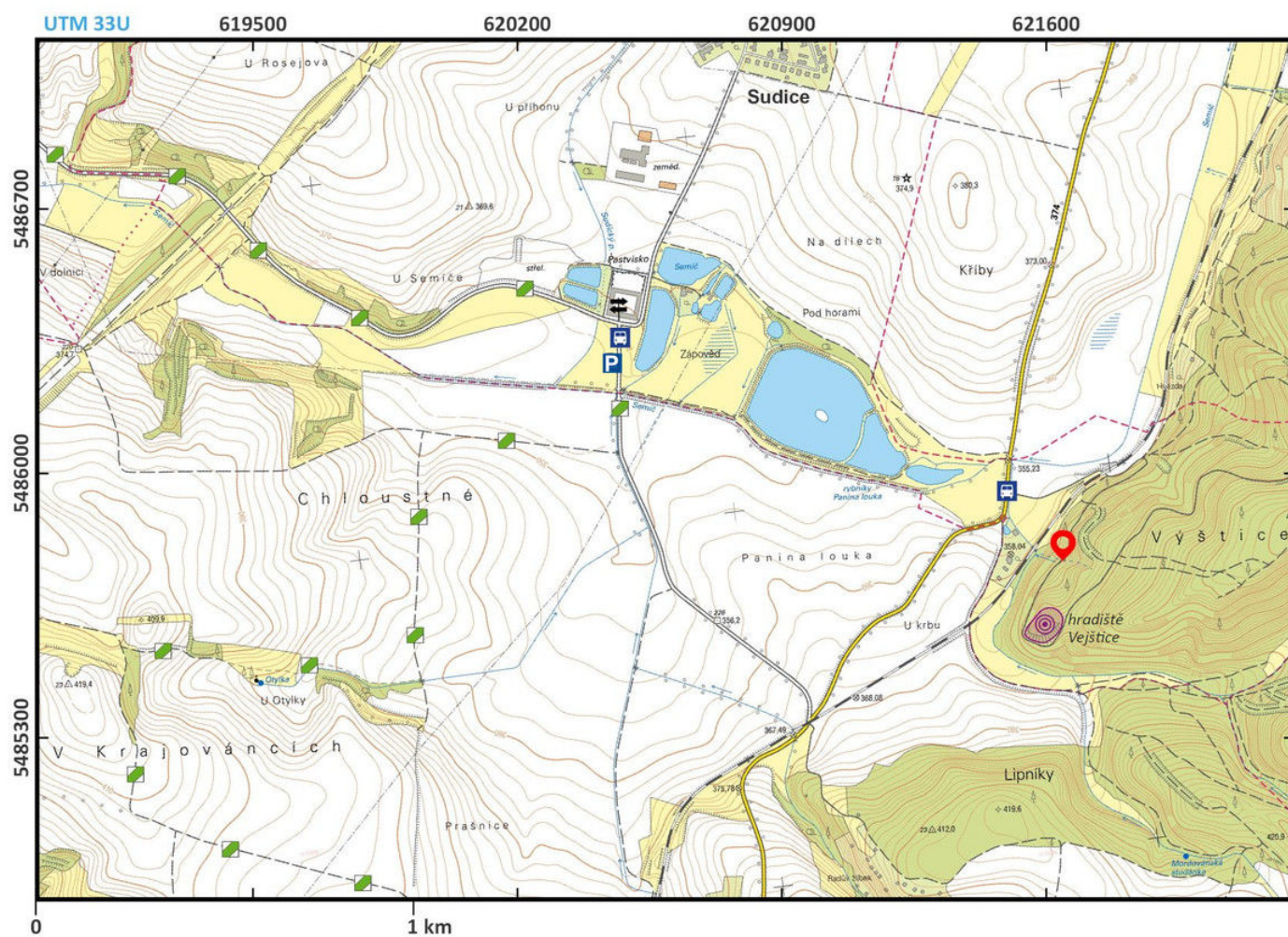
(3100–2800 BC)



The fortified hilltop site Na Vejštici is situated on an oval promontory of 50 x 120 m, 2.3 km south-east from the centre of Sudice in the Adamov Highlands. The slope declines to the south and west, where it faces an unnamed stream. In the north, the remains of the fortification, a rampart and a ditch are still visible. The site has been studied by archaeologists since the 1920s when Karel Snětina and Jaroslav Böhm conducted the first excavations although extensive archaeological fieldwork has been hindered by a forested area. Trenches between the trees yielded settlement remains of the Moravian Painted Ware culture (Neolithic), but mainly the Jevišovice culture (Eneolithic). The fortification is also dated to the time of the Jevišovice culture. Along with other items, tens of loom weights were discovered, providing proof of textile production in an Eneolithic hillfort.

**References:** Böhm – Snětina 1934–1935; Jarůšková – Štrof 2014.

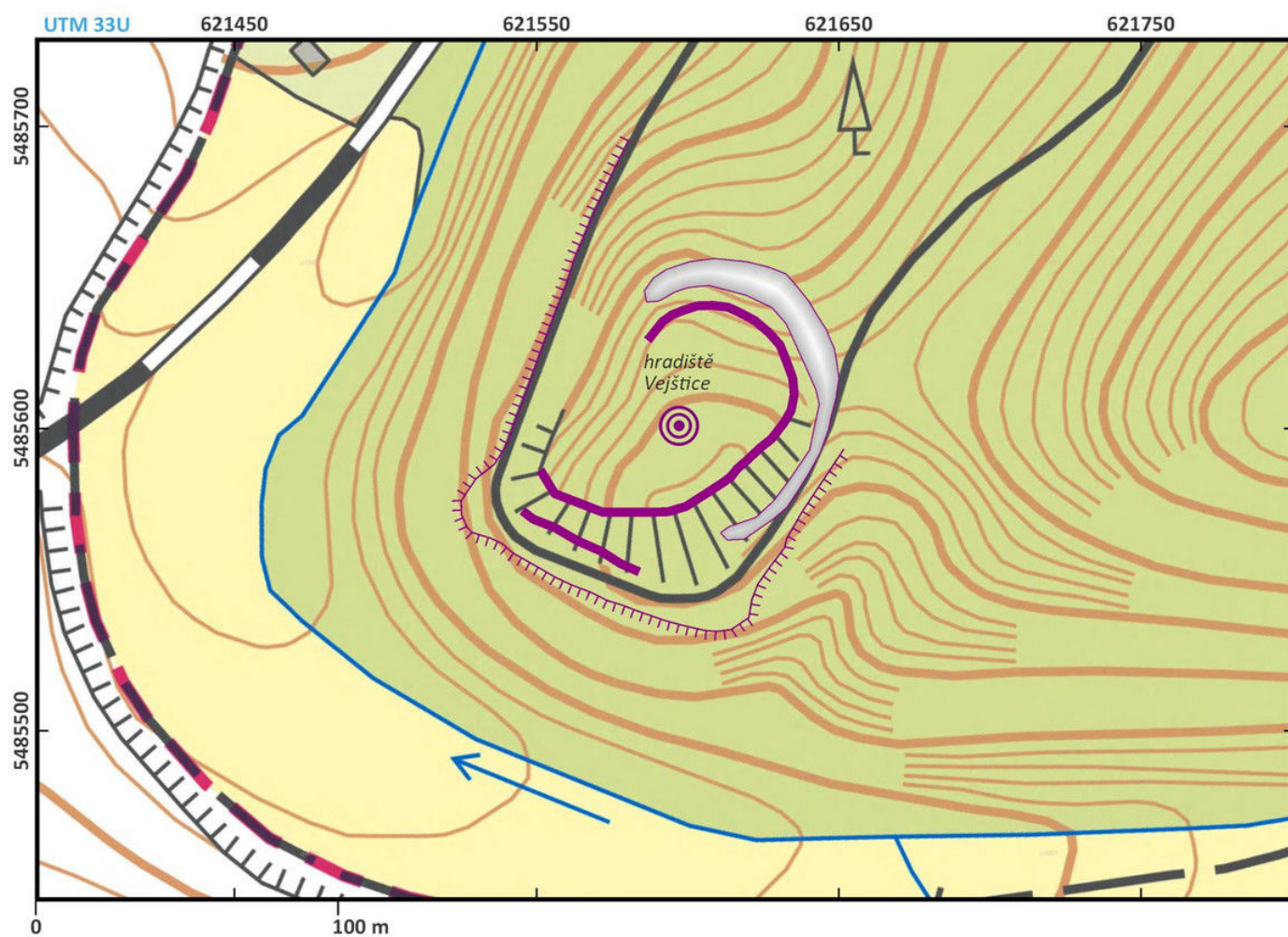
**Navigation point:** N 49°30'44.483", E 16°40'50.155" (on the way to the hillfort).



Access map.

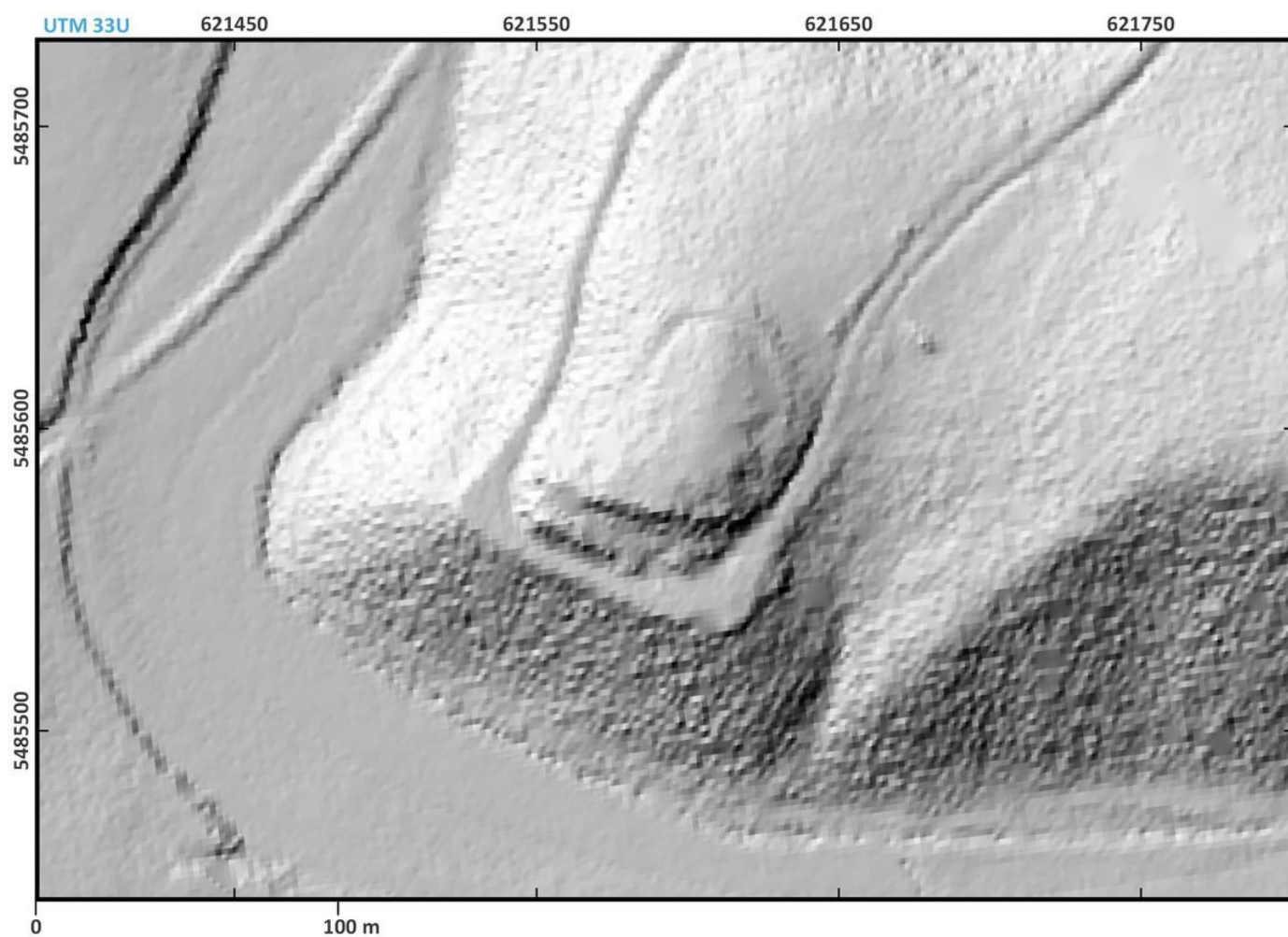
Edited by A. Gašpar, 2020.





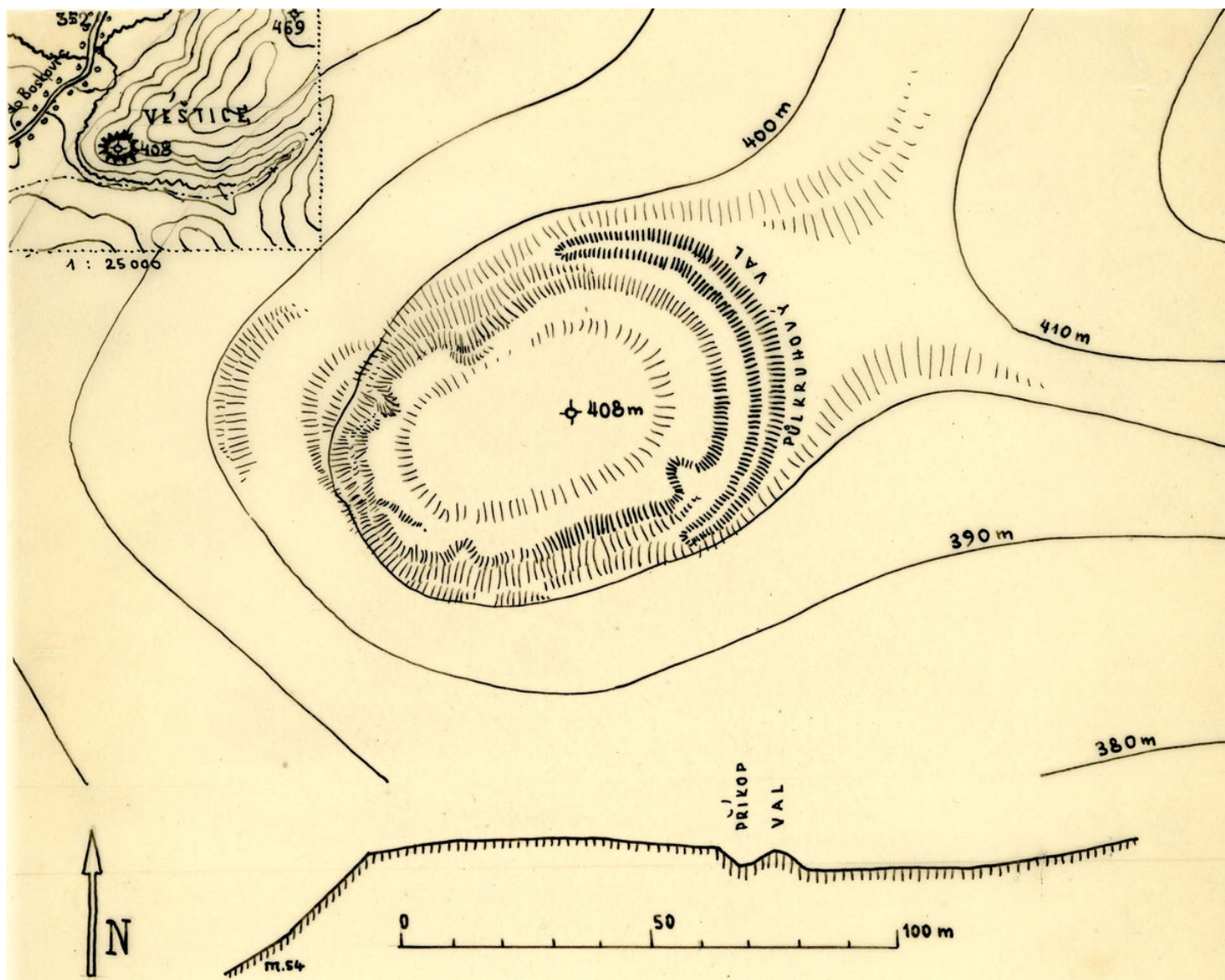
Site plan.

Edited by A. Gašpar, 2020.



Digital relief model of the site.

Edited by A. Gašpar, 2020.



Plan of the hillfort from the 1950s.

After Mackerle 1957.





View of the site – nowadays a wooded area – and acropolis from the north-east.

Photo B. Tesařová, 2021.



Preserved remains of the fortification on the northern side of the hillfort – ditch and rampart.

Photo B. Tesařová, 2021.





Remains of the rampart, view from the north-east.

Photo B. Tesařová, 2021.



Preserved remains of the fortification and steeply sloping terrain on the northern part of the hillfort, which formed natural protection.

Photo B. Tesařová, 2021.





Preserved remains of a ditch and a rampart, view from the north-west.

Photo B. Tesařová, 2021.



Disruption to the hillfort in the south-western part – a section caused by the construction of a forest (military) road in the early 1980s.

Photo B. Tesařová, 2021.