

# Tetín u Berouna, Beroun dist., Central Bohemian Region

## Cave 'Koda'

(prehistory to the Modern Period)

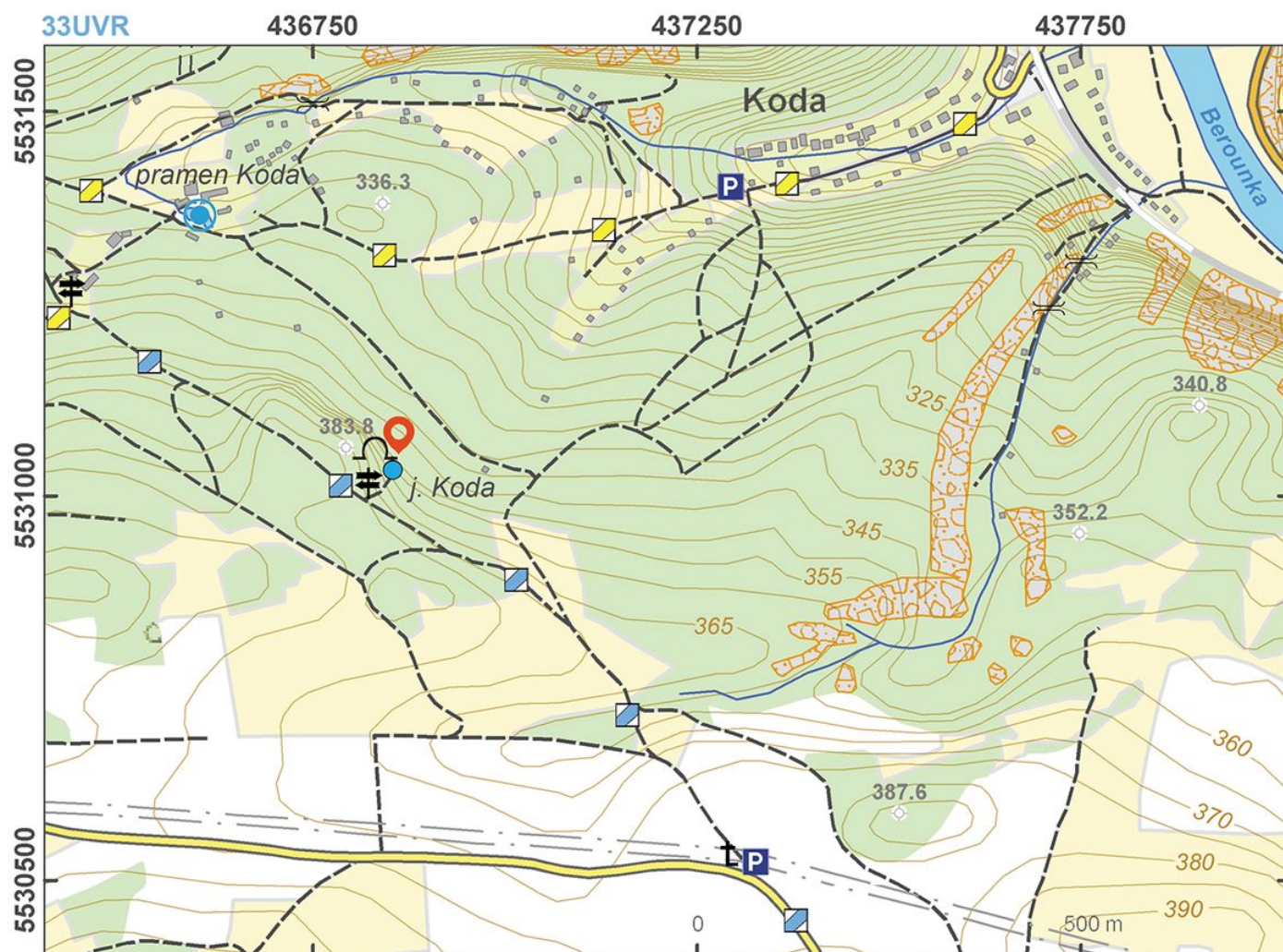


'Koda' Cave in the Bohemian Karst is the site of many finds from prehistory up to the Early Modern Period. Generally, caves were occupied mainly in the Palaeolithic and Mesolithic periods, but they were used in later times as well. The purposes of the use of caves were different – they may have been used as occasional dwellings, places of ritual, funerary areas, etc. Even in the Middle Ages and the Early Modern Period caves were used as temporary dwellings, stables, refuges during times of trouble and places for hiding valuables. As one of the easily accessible rock spaces in the Bohemian Karst, 'Koda' Cave has produced finds mainly from the Neolithic and Eneolithic, including an Early to Middle Bronze Age pottery assemblage of an unusual nature, probably from the Alpine region (area of Lago di Ledro).

**References:** Fridrich – Sklenář 1976; Venc 1978; Sklenář – Matoušek 1994; Matoušek a kol. 2005; Peša 2006.

**Navigation points:** N 49°55'42.50", E 14°07'12.66".





Access map / site plan.

After Kuna et al. 2014.





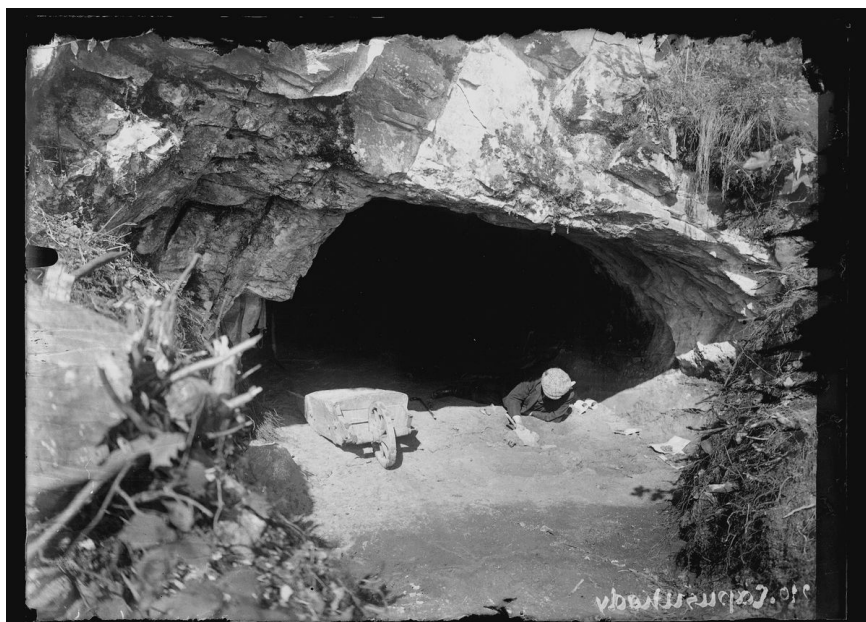
Front part of the Koda Cave.

Photo Z. Kačerová, 2013.



Imitations of Paleolithic art on the cave's sides.

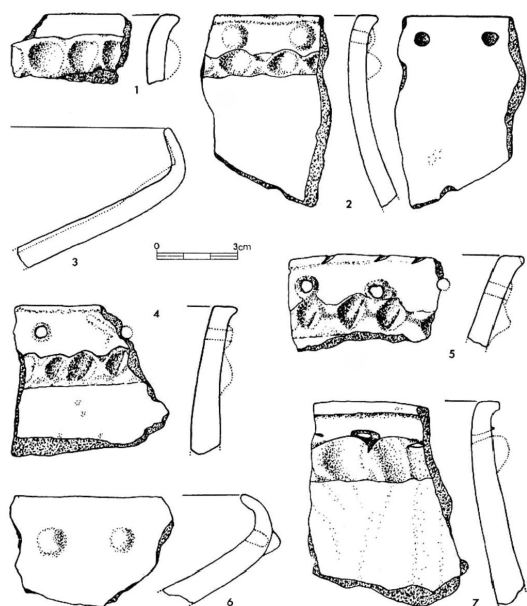
Photo Z. Kačerová, 2013.



A picture from the 1924 excavations of J. Böhm.  
Archives of the IoA.



A picture from the 1924 excavations of J. Böhm.  
Archives of the IoA.



Pottery from the Cave Koda with analogies in northern Italy (Lago di Ledro).  
after Vencel 1978.