

# Třebušín, Litoměřice dist., Ústí nad Labem Region

## Medieval castle 'Kalich'

(15th–16th cent.)

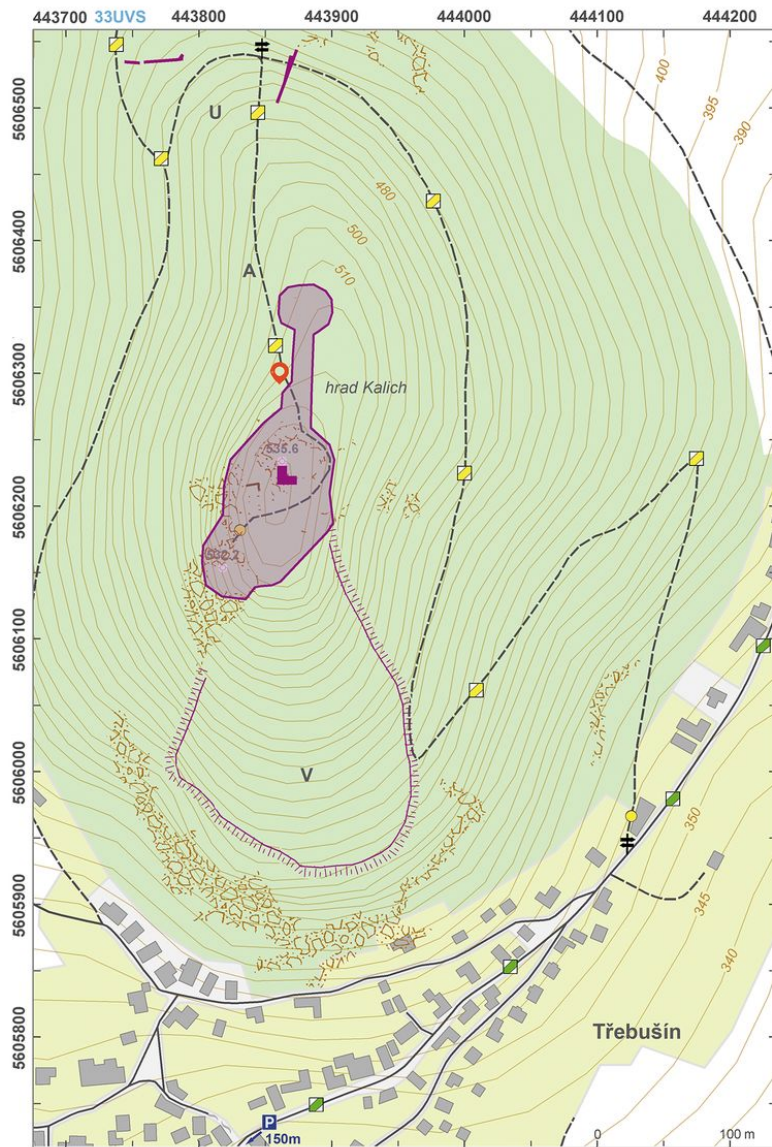


The ruins of Late Middle Ages 'Kalich' Castle are situated on a prominent hilltop in the volcanic Central Bohemian Uplands. The castle was built in 1421 as an important Hussite military point in northwest Bohemia, while also serving as the private residence of Hussite commander Jan Žižka. The castle remained in Hussite hands until 1438, after which it changed owners in the ensuing years; the castle was last occupied in the 1480s. As no larger archaeological excavations have been conducted at the site, the function of many of the buildings remains unclear. Relics found on north and south hillsides may be related to the Hussite military camps.

**References:** Menclová 1972b; Smetana – Gabriel 1982; Gabriel – Panáček 1998; Sedláček 1998a; Durdík 2009; Sýkora 2014.

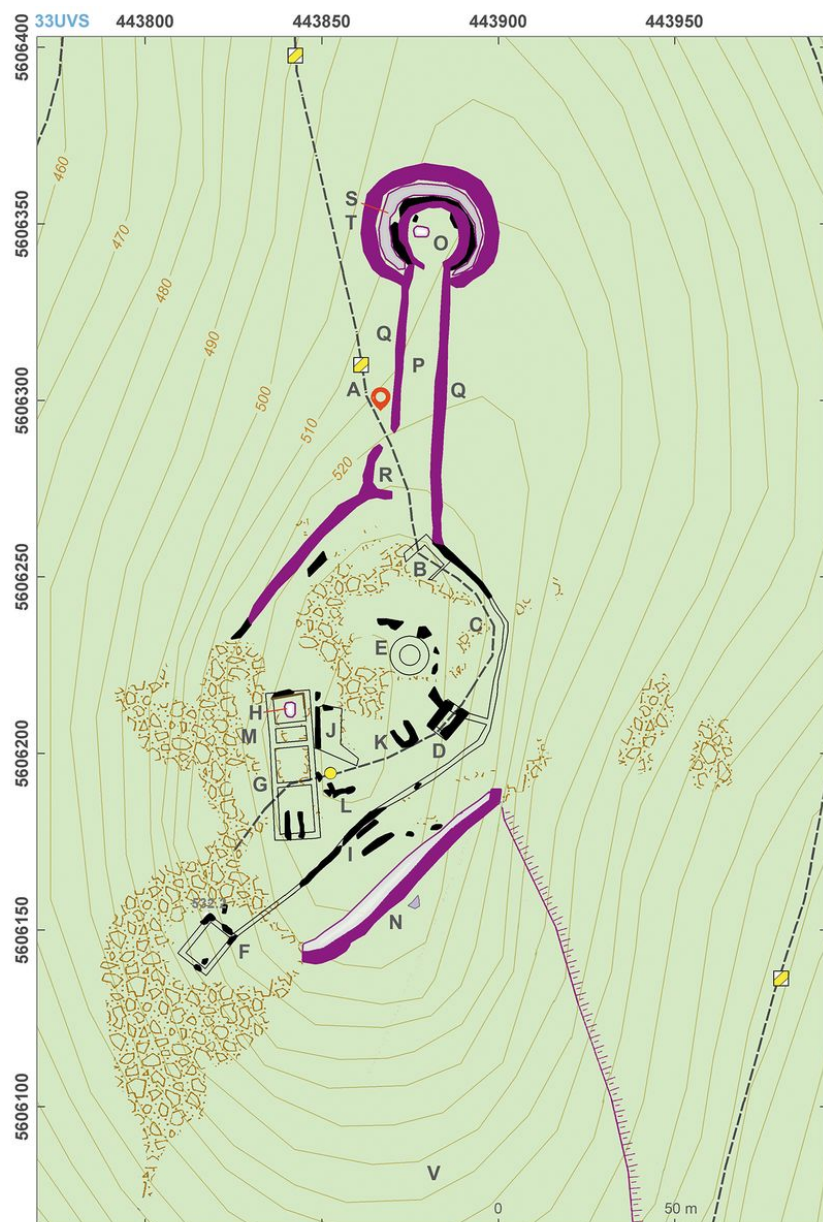
**Navigation points:** N 50°36'20.94", E 14°12'24.30" (entrance).

**Map notes:** A – castle; B – remains of the third gate; C – location of the fourth gate; D – fifth gate in the form of a gateway tower; E – location of keep; F – remains of residential tower or tower-type palace; G – remains of multipartite palace; H – well or cistern; I – bank with stone screen wall and a ditch; J – remains of two-compartment building; K – rectangular building, perhaps of the 19th century; L – building remains; M – location of surface structures; N – bank and ditch; O – forward artillery position with chamber embrasures; P – fortified corridor between the castle and the forward position; Q – earth banks with stone screen wall; R – location of the second gate; S – ditch; T – bank; U–V – fortified areas (Hussite military camps or later baileys-suburbs).



Access map.

After Kuna et al. 2014.



Site plan.

After Kuna et al. 2014.





Fifth gateway - the entrance to the castle.

Photo Z. Kačerová, 2014.



Fifth gate.

Photo Z. Kačerová, 2014.





Bank fortification in the northern foreground of the castle.

Photo D. Mikoláš, 2014.



Panoramic picture of Třebušín region. Castle 'Panna' (left), Castle 'Kalich' (centre) and Castle 'Litýš' (right).

Photo M. Sýkora, 2012.