

# Vitín, České Budějovice dist., South Bohemian Region

## Early Medieval barrow cemetery

(9th cent.)

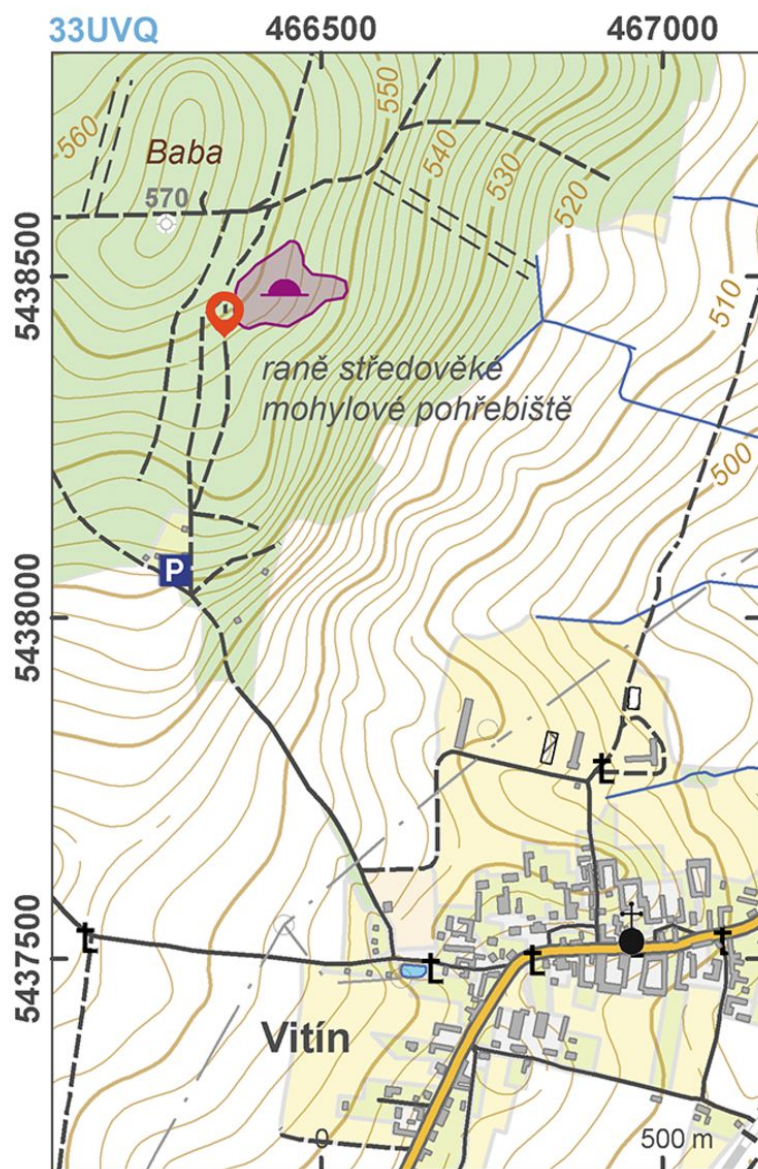


A well-preserved Early Medieval barrow cemetery dating to the 9th century. A total of 69 barrows arranged in several rows running from east to west were identified here. Archaeologists excavated just one barrow, which contained burnt wood, potsherds and earrings; the presence of cremation remains can be presumed, but were not identified. Unfortunately, the majority of barrows have been disrupted by treasure hunters. Numerous Early Medieval and prehistoric barrow cemeteries are found in the wooded territory near Hluboká nad Vltavou.

**References:** Beneš A. a kol. 1999; Kuna 2008.

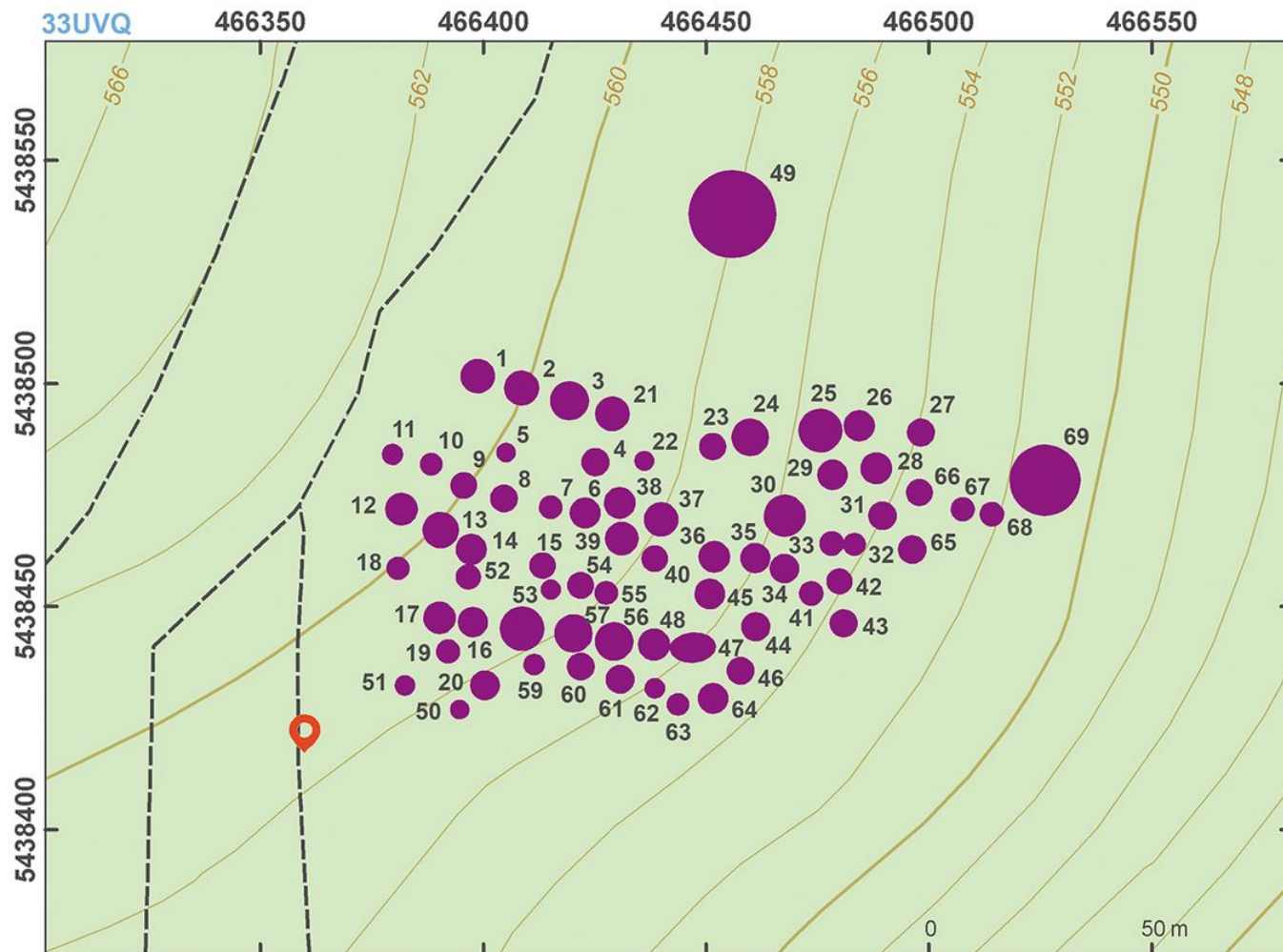
**Navigation points:** N 49°05'51.79", E 14°32'21.02".

**Map notes:** 1–69 – barrows.



Access map.

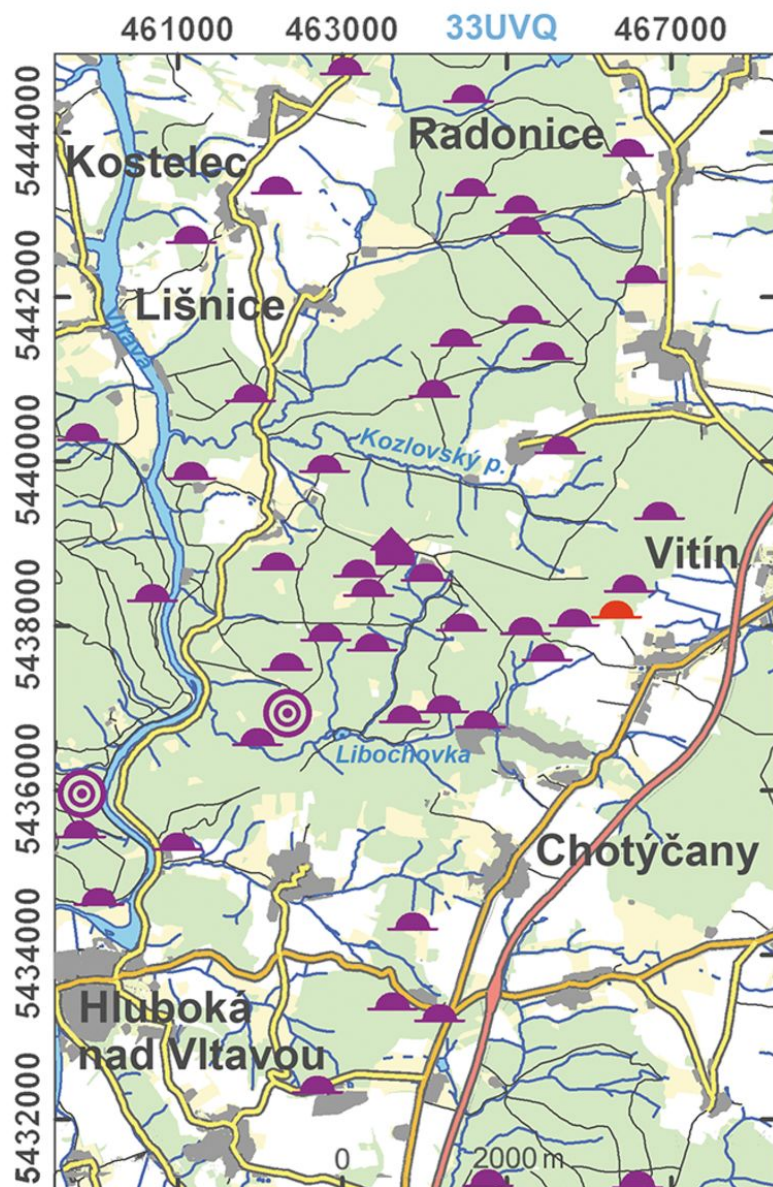
After Kuna et al. 2014.



Site plan.

After Kuna et al. 2014.





Barrow cemeteries and hillforts in the civinity of Vitín.

After Kuna et al. 2014.



Barrow Nr. 62 with an earlier pit dug in its centre.

Photo J. Mařík, 2014.



Northwestern part of the cemetery.

Photo J. Mařík, 2014.





Barrow Nr. 42 with a pit dug in its centre.

Photo J. Mařík, 2014.



Centrální část pohřebiště.

Foto J. Mařík, 2014.



Barrows Nr. 48, 56 and 57.

Photo J. Mařík, 2014.



A row of barrow in southern part of the cemetery.

Photo J. Mařík, 2014.





A barrow damaged by a pit dug in its centre.

Photo J. Mařík, 2014.



Central part of the cemetery.

Photo J. Mařík, 2014.