

# Zabrušany, Teplice dist., Ústí nad Labem Region

## Early Medieval hillfort

(8th–11th cent.)

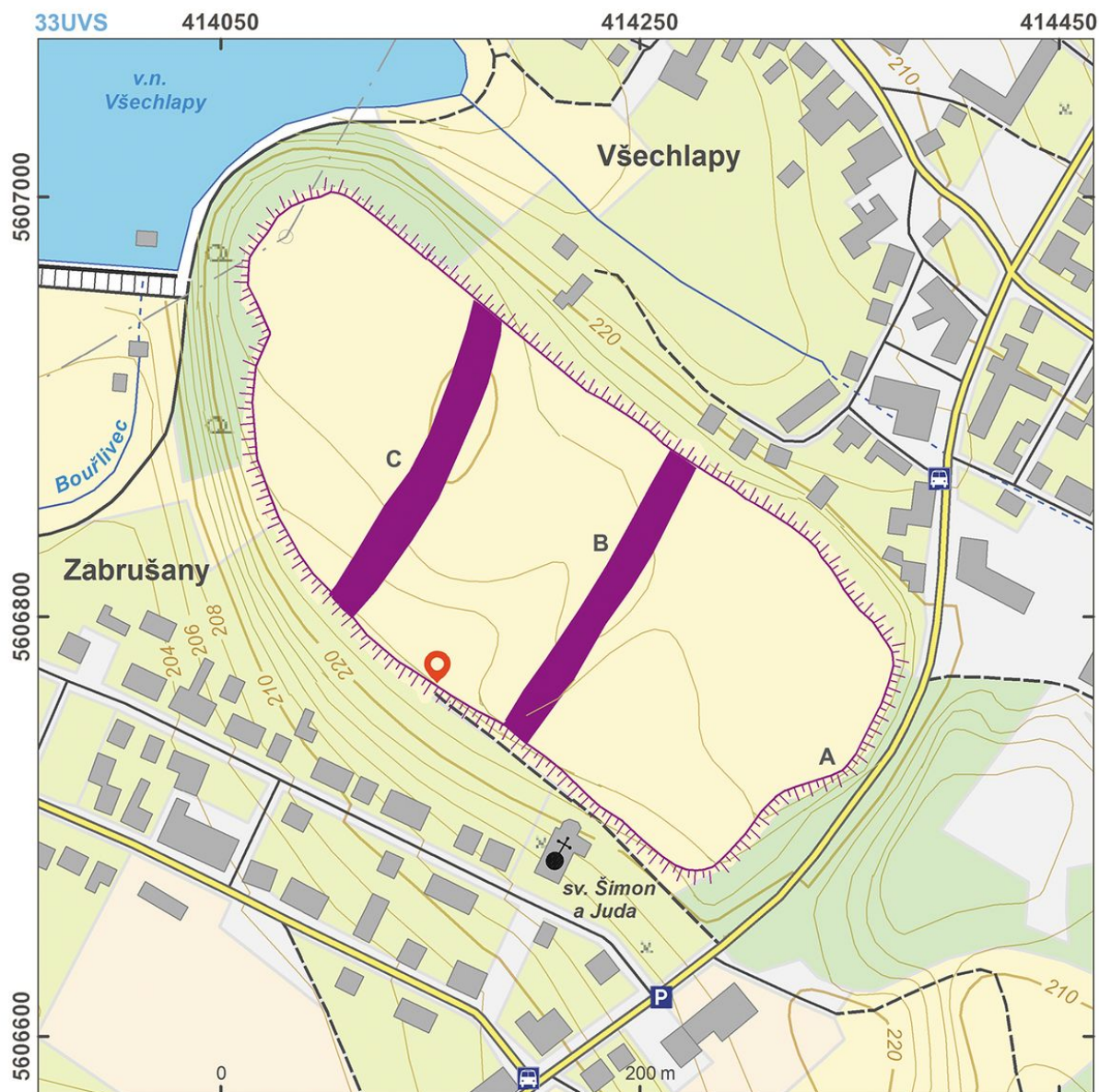


An Early Medieval hillfort of the 8th to the 11th century, whose function was later taken over by the Přemyslid administrative castle of Bílina. The originally tripartite settlement, fortified by a wood and earth chamber rampart with a frontal stone screen wall, was previously thought to be the residence of Prince Wistrach and his son Slavita that was attacked in 857 by the Frankish army. The use of the hillfort by the social elite is perhaps documented by an assemblage of luxurious jewellery found in a 'princely' barrow grave in nearby Želénky. From the archaeological perspective, the hillfort is well-known primarily due to the 'Zabrušany-type' pottery produced in the 10th century in northwest Bohemia and Saxony.

**References:** Váňa 1951; Rusó 1991; Kotková 2012.

**Navigation points:** N 50°36'23.33", E 13°47'12.66" (southwest).

**Map notes:** A – outer bank, mostly destroyed during road construction; B – middle bank; C – inner bank; D – barrow grave in Želénky.



Access map / site plan.

After Kuna et al. 2014.





Map of Early Medieval settlements and cemeteries in the vicinity of Levý Hradec.

After Kuna et al. 2014.



Archive picture of the hillfort, view from north.

Archive of the IoA, FT-82242.



Aerial view of the hillfort.

Photo M. Gojda, 1995.





Aerial view of the hillfort.

Photo M. Gojda, 1995.



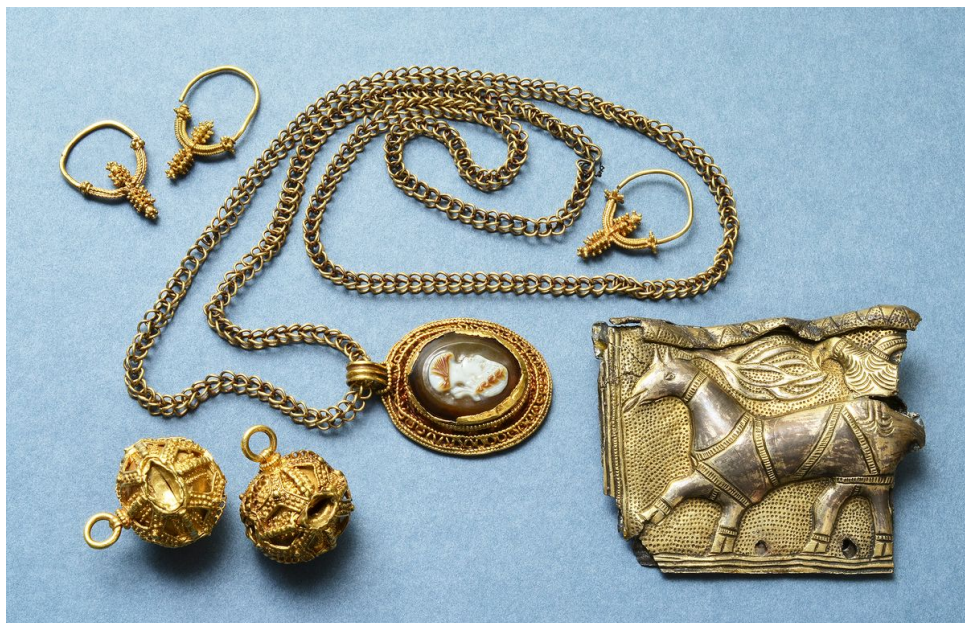
Fragment of the so-called Zabrušany pottery with characteristic decoration.

Photo M. Kotková, 2012.



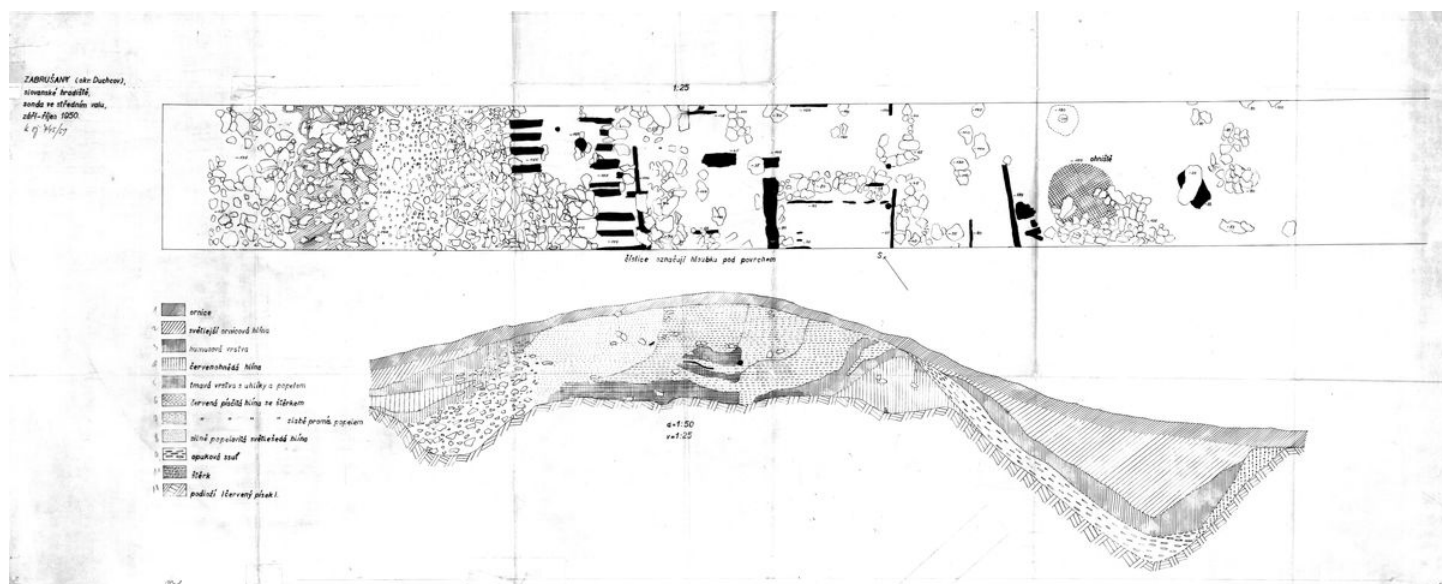
Fragment of the so-called Zabuřany pottery type.

Photo M. Kotková, 2012.



Gold jewellery from the so-called Princely grave in Želénky.

NM Prague, Inv. Nos. H1-118.744, H1-118.743, H1-118.749.



Cross-section of the middle bank during excavations in 1950.

Archives of the IoA, PY000649002.