

# Zálezly u Čkyně, Prachatice dist., South Bohemian Region

## Prehistoric hillfort 'Věňec'

(650–400 BC)



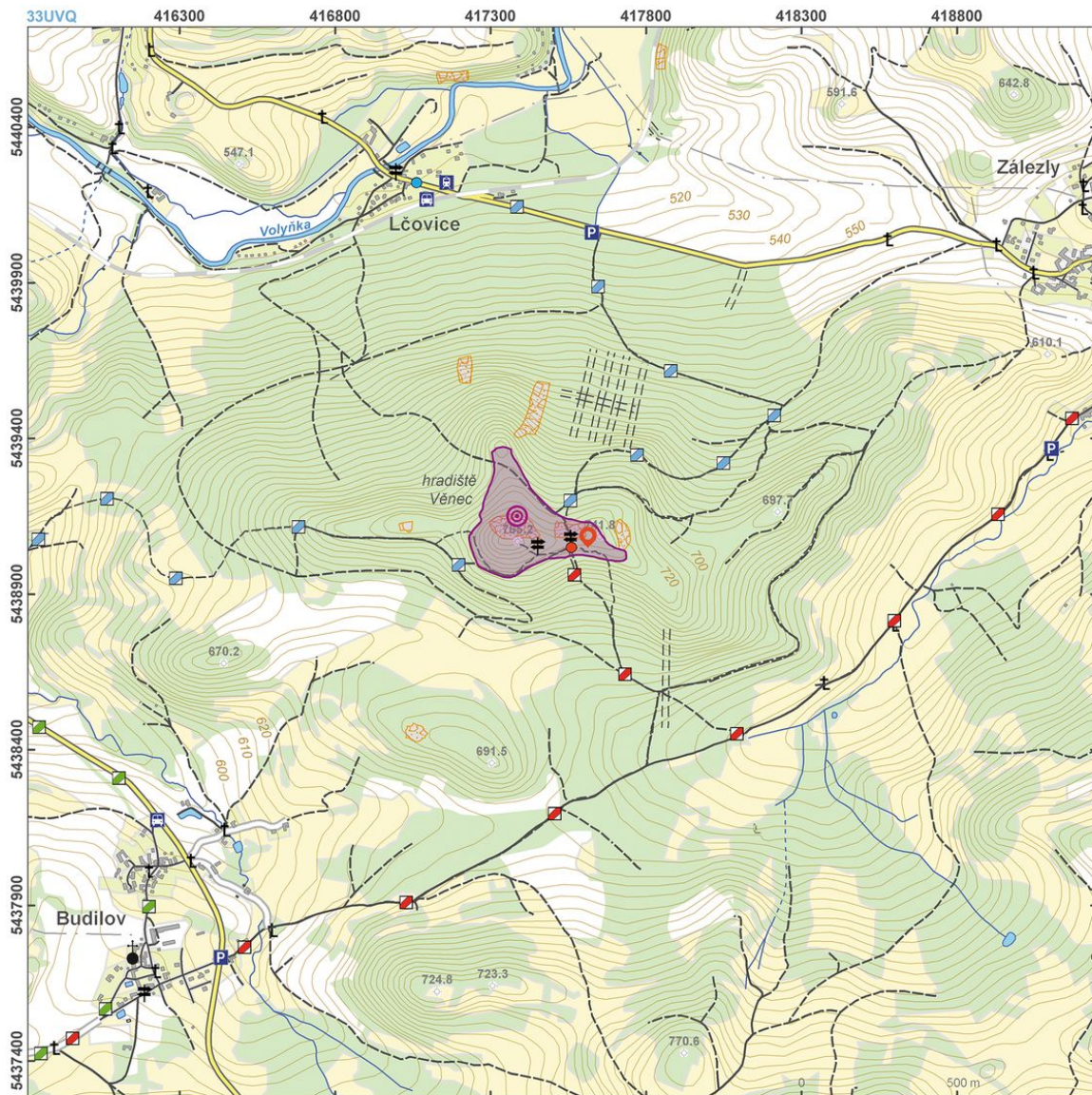
The monumental 'Věňec' ('Wreath' in Czech) Hallstatt Period hillfort is situated at the edge of the inhabited foothills of the Šumava Mts. Its massive fortification consists of an acropolis and an extensive annexe. The whole enclosed fortified area covers nearly 8 ha. The ramparts are made of stone walls attached to natural rock blocks at a number of places. Due to the limited excavations and a small number of finds, we can only speculate on the function of the site. It most probably served as an occasional refuge or gathering point of local people rather than a permanent residence.

**References:** Dubský 1949; Beneš J. 1994; Čtverák a kol. 2003; Kuna a kol. 2004; Slabina 2005.

**Navigation points:** N 49°05'55.77", E 13°52'14.55".

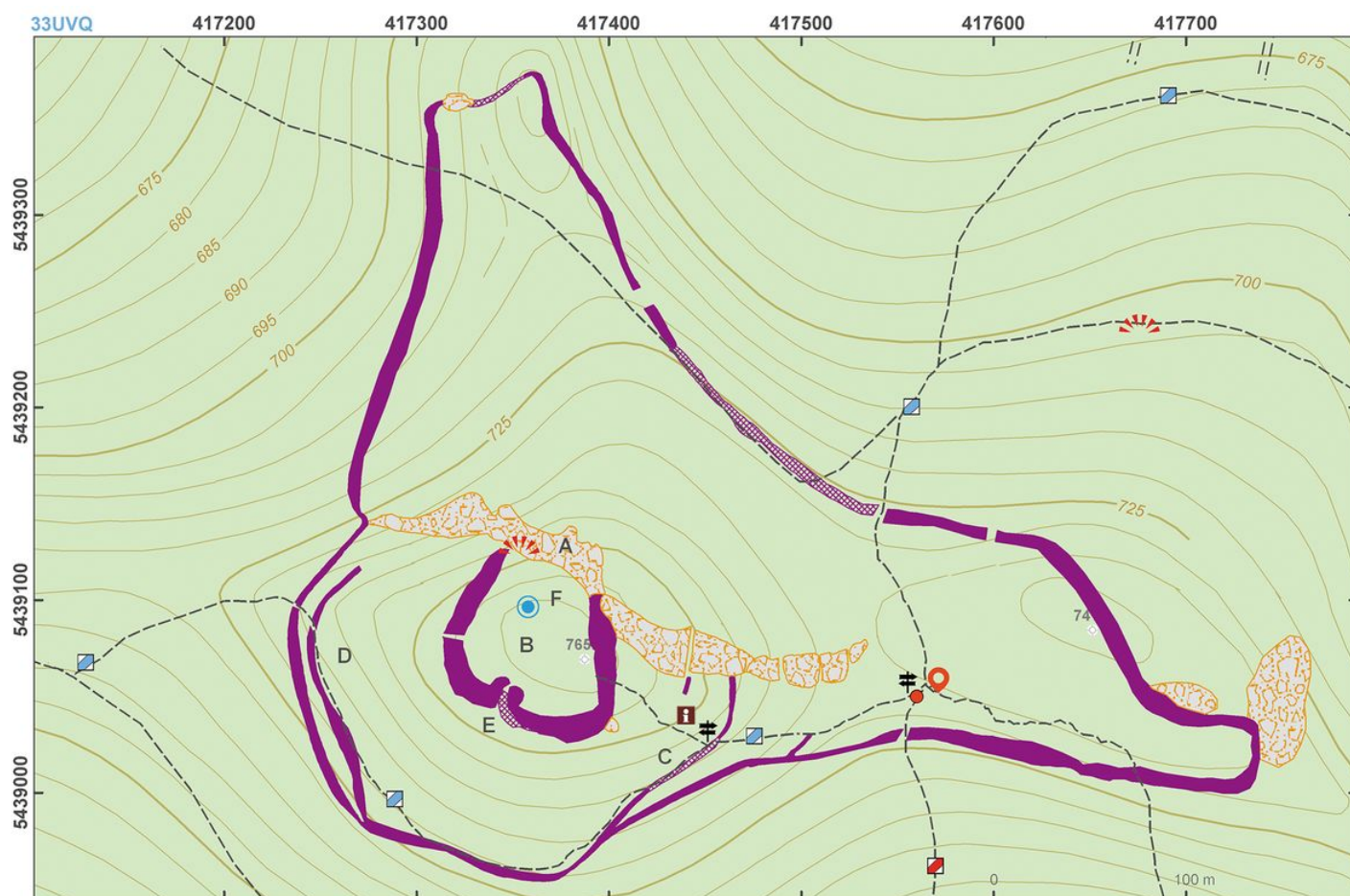
**Map notes:** A – natural stone 'bastion' known as 'Lookout' ('Vyhliídka') or 'Great Rock'; B – acropolis; C – bank; D – doubled part of the outer fortifications; E – original entrance to the acropolis; F – spring lined with stone.





Access map.

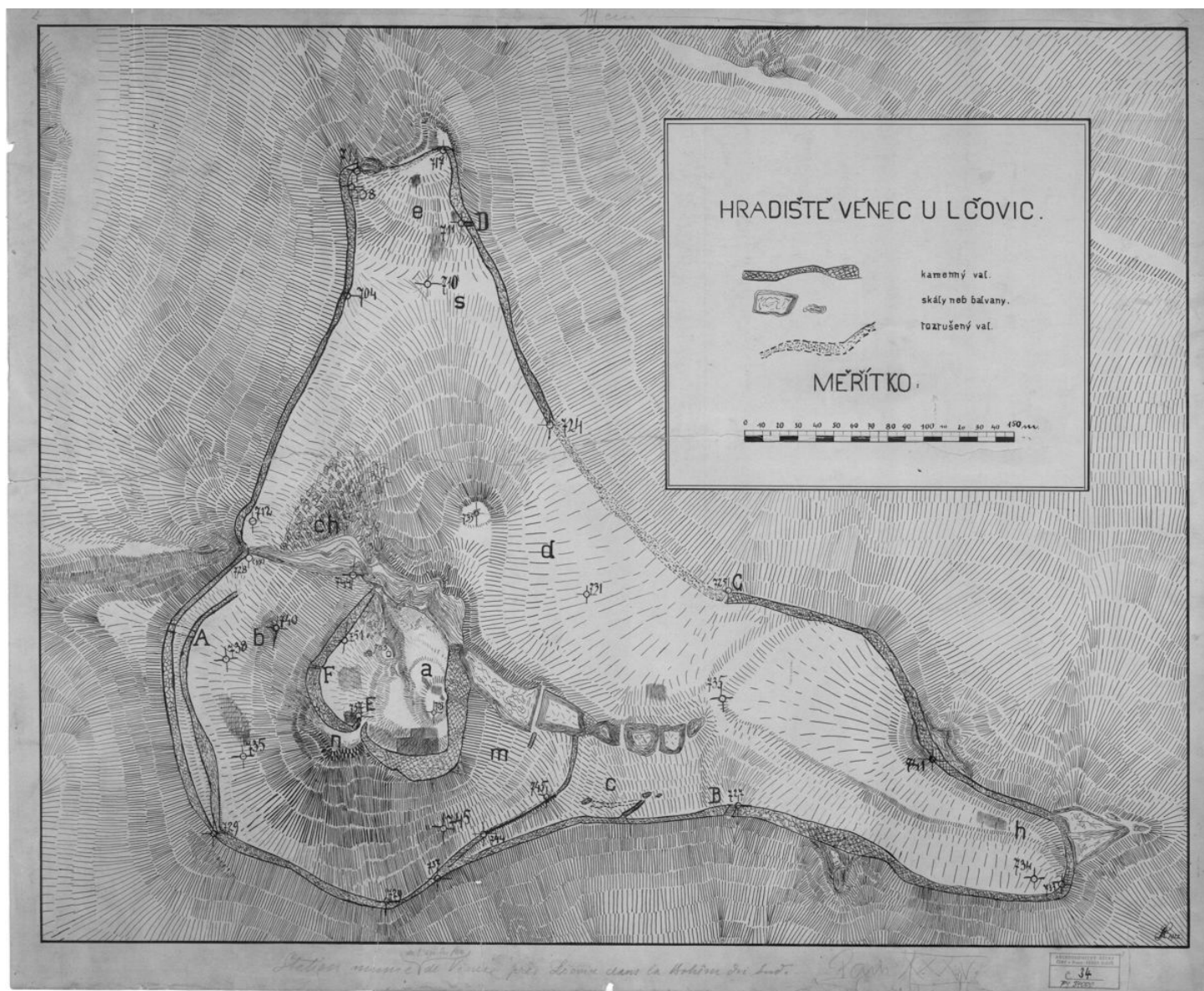
After Kuna et al. 2014.



Site plan.

After Kuna et al. 2014.





Plan of the hillfort.

Measured by A. Stocký (1922). Archives of the IoA, PY000034000.



Huge stone bank at the 'Vě nec' hillfort.

Photo D. Dreslerová, 2014.



A spring with stone lining located at the acropolis.

Photo D. Dreslerová, 2014.





Connection of the rampart to a natural rock on the eastern side of the acropolis. View from the south.  
Photo Z. Kačerová, 2014.



View of the 'Věňec' hillfort.  
Photo Z. Kačerová, 2014.