

Žalov, Prague-West dist., Central Bohemian Region

Early Medieval hillfort 'Levý Hradec'

(9th–12th cent.)

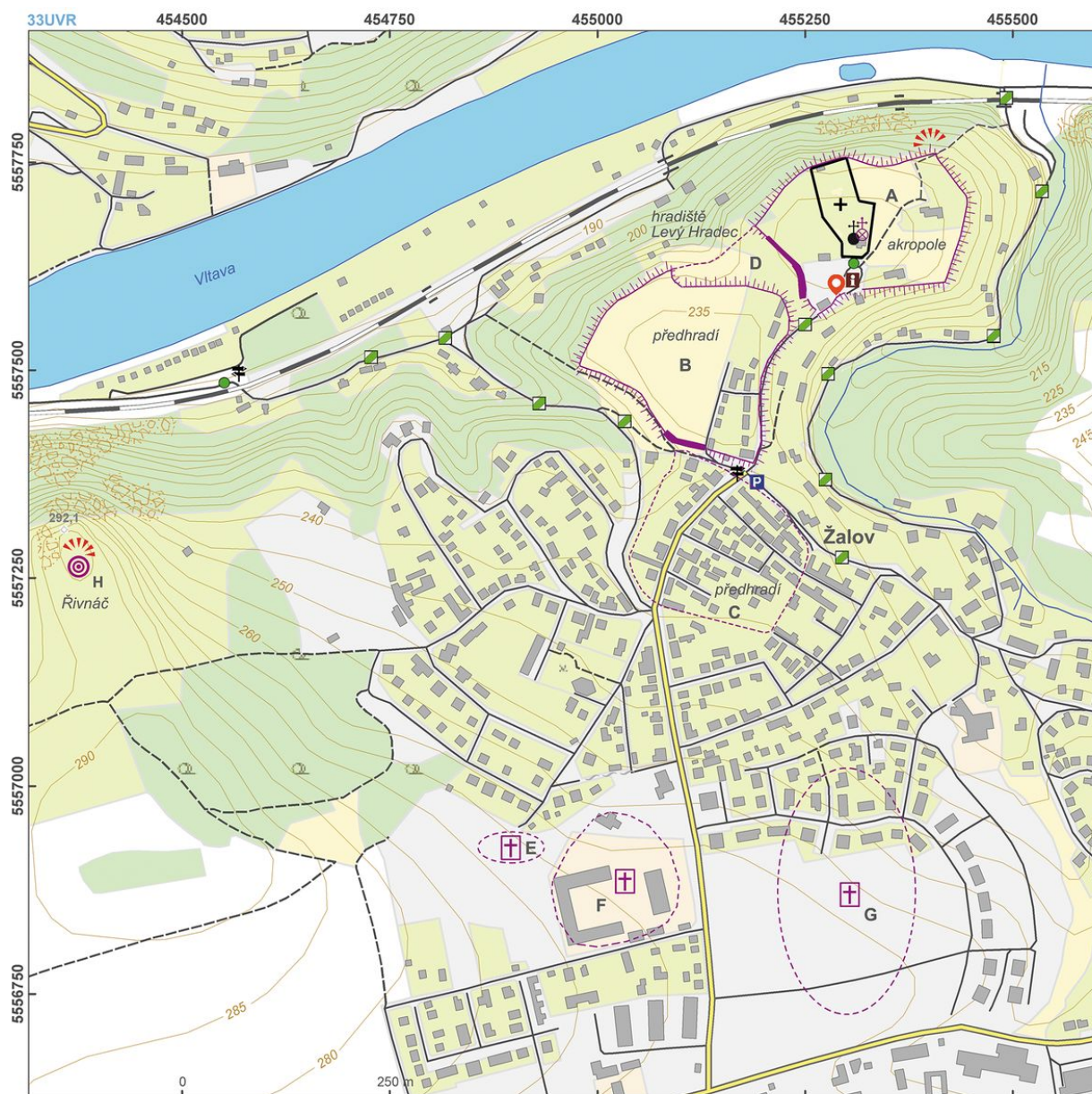


The Early Medieval hillfort called 'Levý Hradec' was a major Přemyslid centre and the venue for several historical events. In the 880s, Prince Bořivoj I had the first Christian church in Bohemia built there – the Church of St Clement; furthermore, St Adalbert was elected here as the second bishop of Prague in 982. The hillfort, comprising two to three separate areas (an acropolis and one or two baileys), was fortified with a wood and earth rampart with a frontal stone screen wall, a ditch and a palisade. In the vicinity of 'Levý Hradec' several cemeteries were located that have been partly excavated so far. The importance of the hillfort declined during the 11th century, and in the 13th century a village was built at the site.

References: Borkovský 1965; Tomková 2001, 2009; Daněček a kol. 2011; Tomková a kol. 2012.

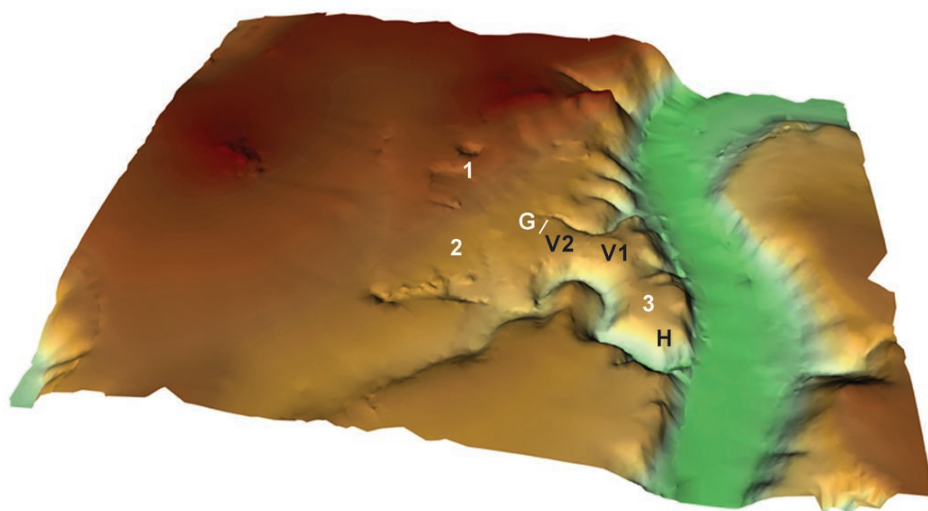
Navigation points: N 50°10'07.89", E 14°22'26.10".

Map notes: A – acropolis; B – bailey; C – probable second bailey; D – the 'Ve Vikouši' ravine between the acropolis and the first bailey; E–F – Early Medieval cemeteries excavated in the clay pit during the first half of the 20th century; G – Early Medieval cemetery in the 'Na Panenské' site investigated in 2003-2011; H – prehistoric 'Řivnáč' culture hilltop settlement.



Access map / site plan.

After Kuna et al. 2014.



Surface model of the Moldau River valley, the hillfort in on the left.
After Geo-CZ.



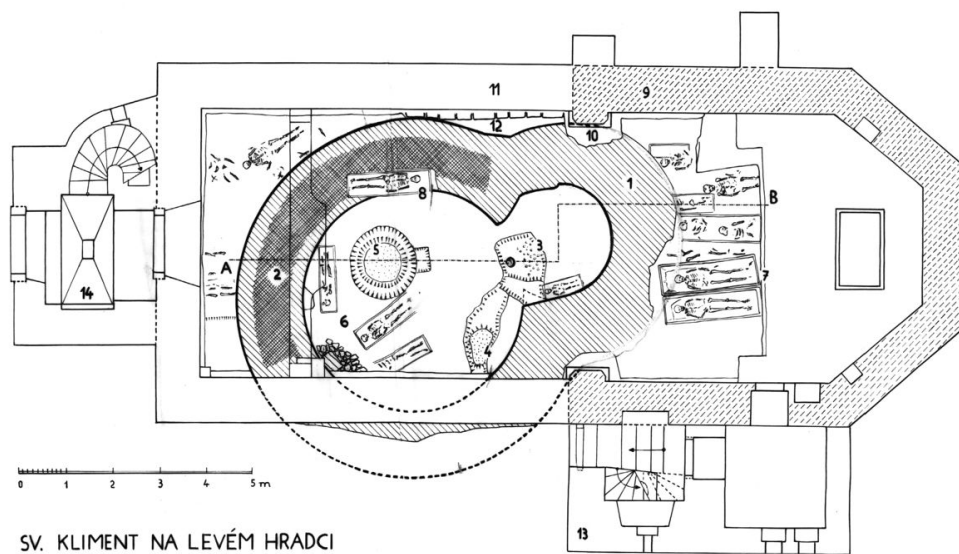
Bank on the hillfort's acropolis.
Photo J. Marounek.



View of the hillfort in times of I. Borkovský's excavations in 1940s, taken from west.
Archives of the IoA.



St Clement rotunda beneath the modern church on the hillfort's acropolis in 1940.
Archives of the IoA, FT-2961.



Groundplan St Clement rotunda during excavations conducted by I. Borkovský.
Archives of the IoA, PY000004010.



19th century engraving depicting the church of St Clement.
Archives of the IoA.



Acropolis of the hillfort on a photograph from the 1940s excavation conducted by I. Borkovský.
Archives of the IoA.

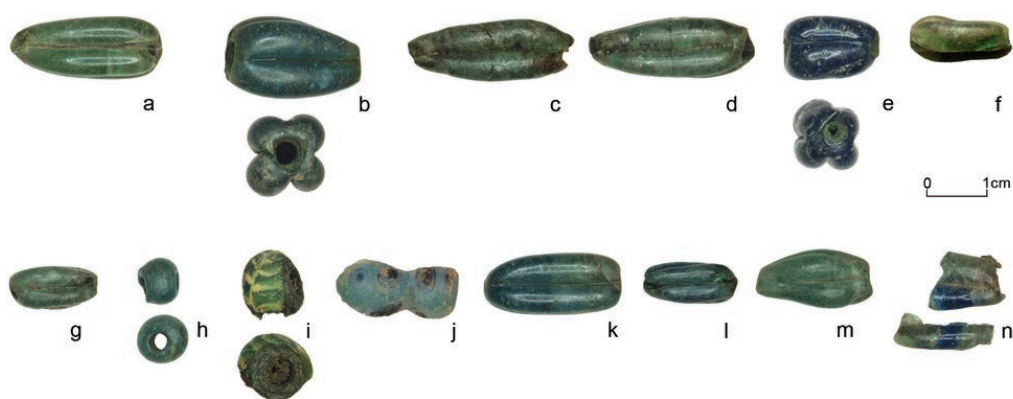


Ivan Borkovský during archaeological excavations of the acropolis' fortification in 1940s.
Archives of the IoA.



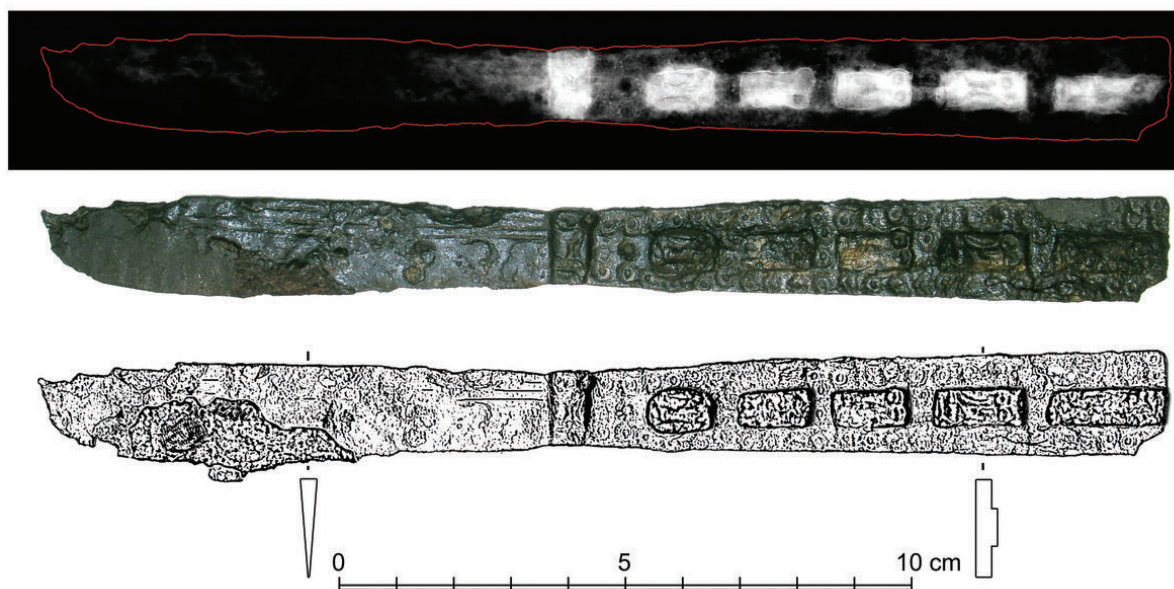
Outer screen wall of the fortification during 1940s excavations.

Archives of the IoA.



Neckles made of glass beads from one of Early Medieval graves in the vicinity of the hillfort.

Photo K. Tomková, 2014.



Iron knife from an Early Medieval grave found in the vicinity of the hillfort.

Photo K. Tomková, 2012.



Golded spherical pendant with embossed decoration.

Photo J. Vrabec, 2006.